

# Proposed Floor Plan for Case 741-AM-13

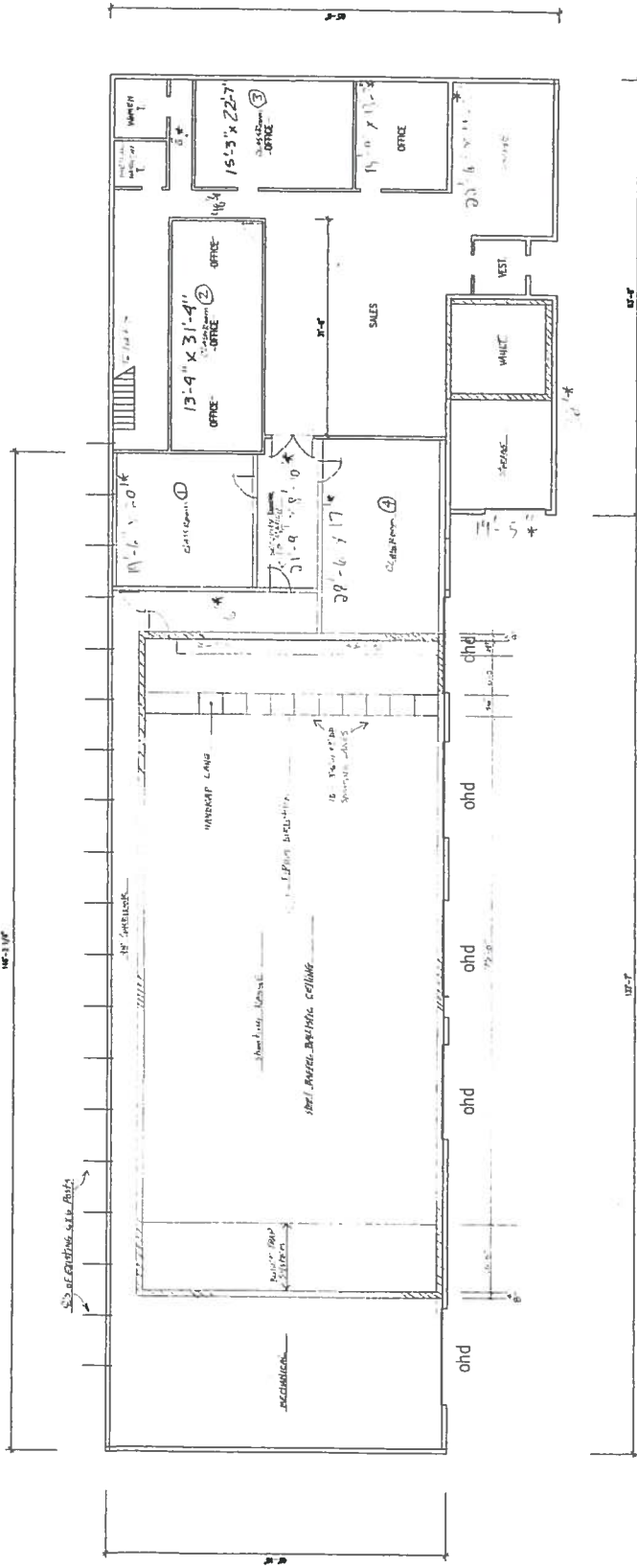
**MSA**  
**PROFESSIONAL SERVICES**  
 ARCHITECTURAL SERVICES  
 TRANSPORTATION • AIRCRAFT  
 DESIGN • ARCHITECTURAL  
 ENGINEERING • MECHANICAL  
 ELECTRICAL • PLUMBING  
 1115 SOUTH MAIN STREET  
 SUITE 100  
 CHAMPAIGN, ILLINOIS 62601  
 TEL: 219.244.4444  
 FAX: 219.244.4445  
 WWW.MSA-ARCHITECTS.COM

**EXISTING ONE STORY INDUSTRIAL BUILDING**  
 1919 TRUMBULL DRIVE  
 CHAMPAIGN COUNTY, IL

This drawing is prepared in accordance with the specifications of the project and shall be used only for the purpose intended. It is not to be construed as a contract.

No.	Date	Revised

Drawn: \_\_\_\_\_  
 Reviewed: \_\_\_\_\_  
 Date: 02/28/13  
 Proj. No.: \_\_\_\_\_  
 Sheet: \_\_\_\_\_



LEGEND  
 --- CONCRETE WALLS



FLOOR PLAN OF EXISTING BUILDING  
 WITH TRUMBULL DRIVE CHAMPAIGN COUNTY, ILLINOIS

\* Dimensions provided by Don Alken and added by Andy Kass 4/19/13

**RECEIVED**  
 APR 19 2013  
 CHAMPAIGN CO. P & Z DEPARTMENT