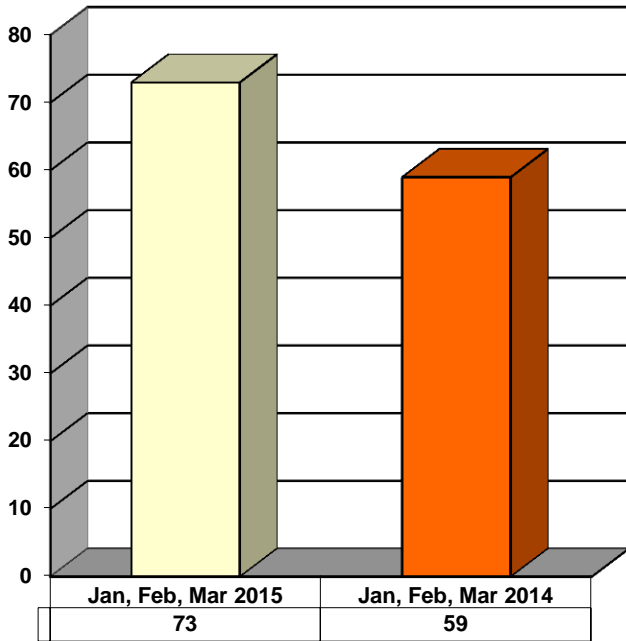
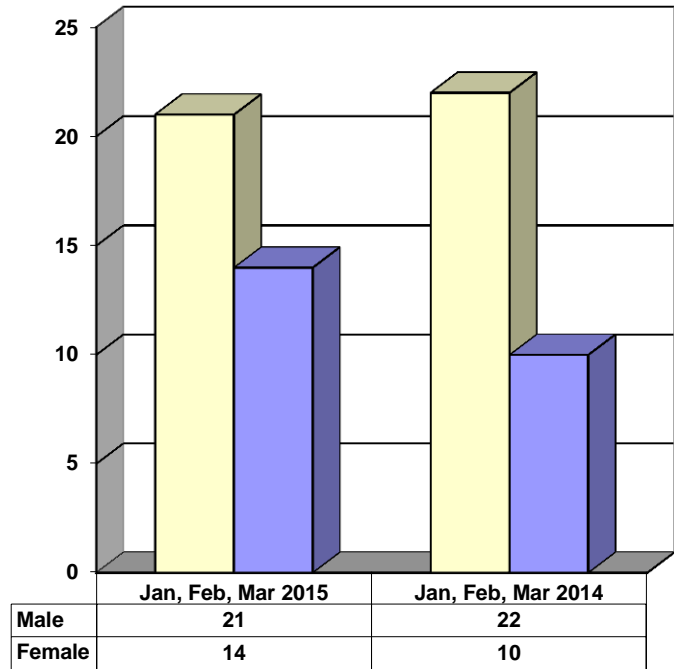


**JUVENILE SUPERVISION INFORMATION
MONTHS OF JANUARY, FEBRUARY AND MARCH 2015
(Compared to Prior Year)**

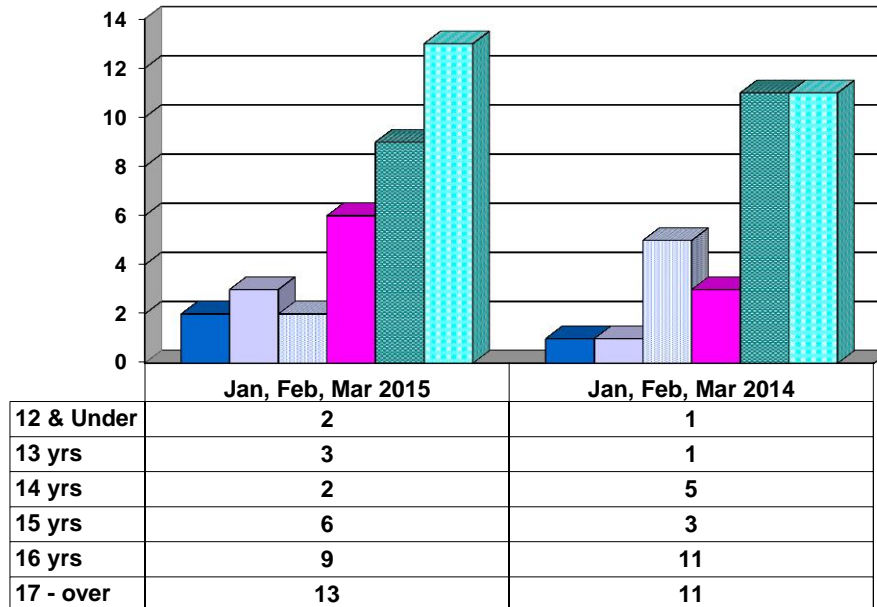
Juvenile Delinquency Petitions Filed



Demographics for Juvenile Admissions

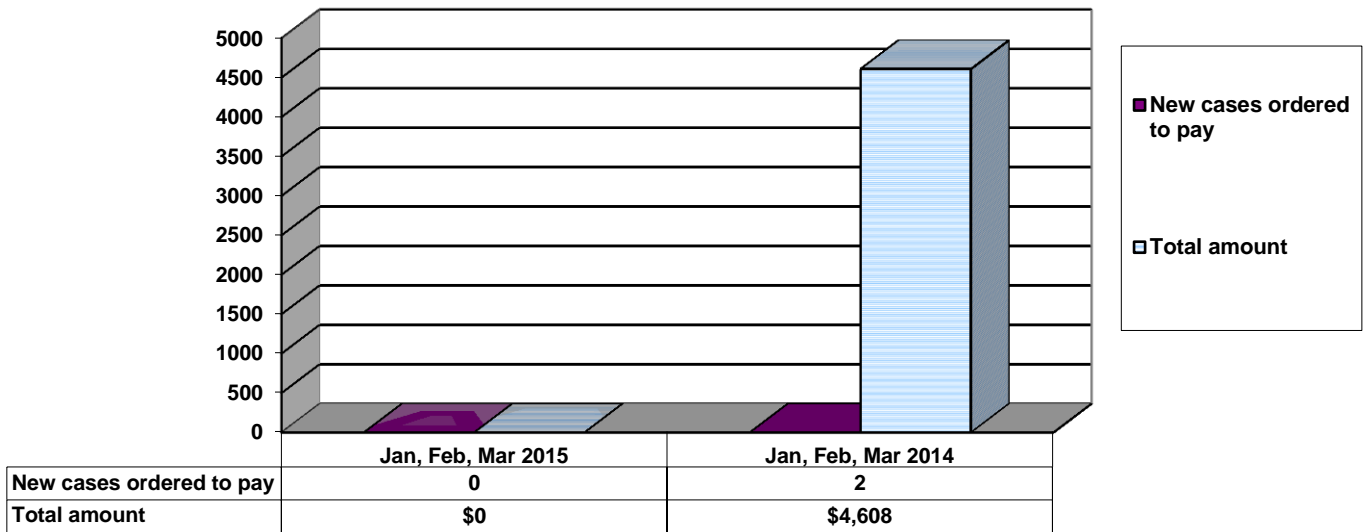


Age Demographics for Juvenile Admissions

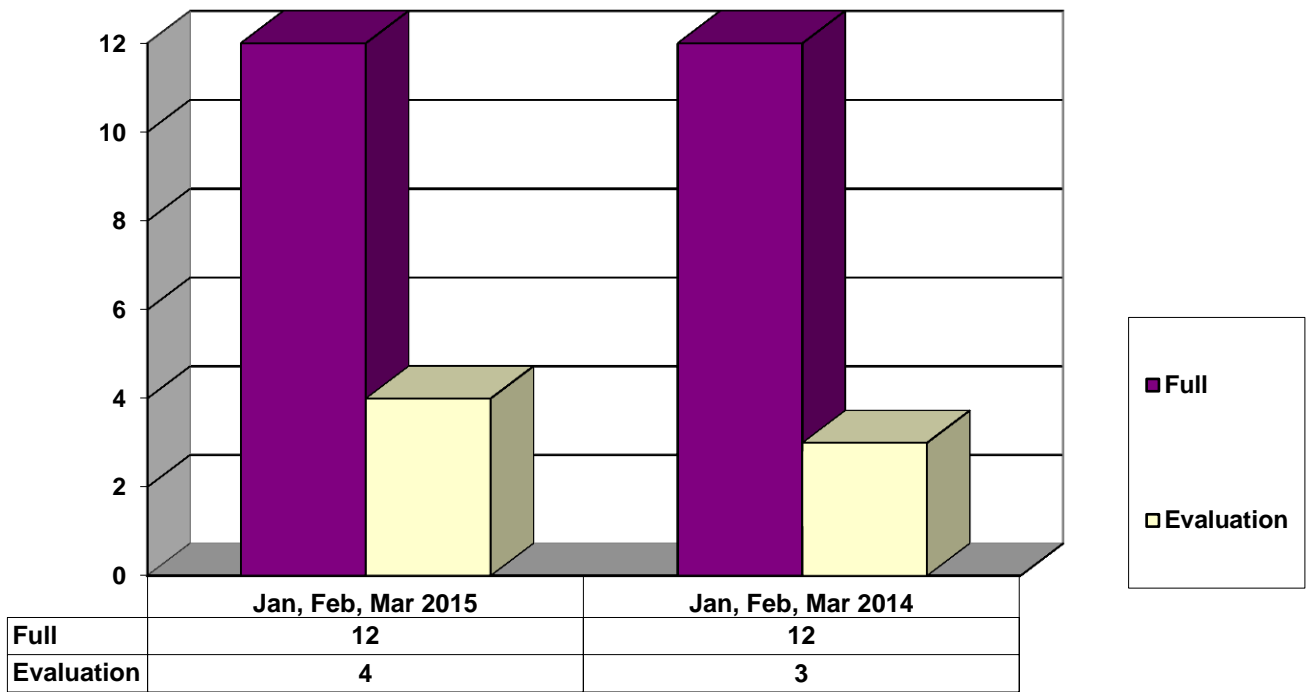


■ 12 & Under
 ■ 13 yrs
 ■ 14 yrs
 ■ 15 yrs
 ■ 16 yrs
 ■ 17 - over

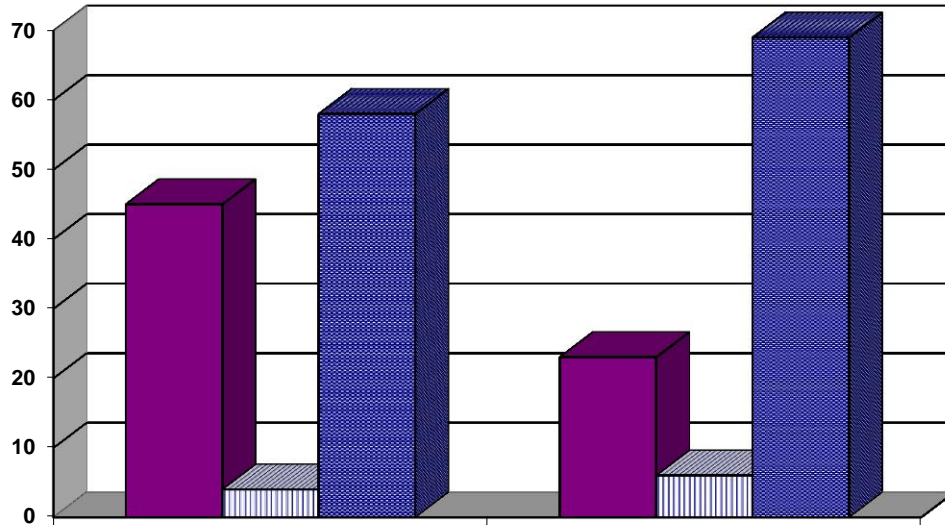
Restitution Ordered in New Juvenile Cases



Commitments to Illinois Department of Juvenile Justice



Investigations Completed by Juvenile Unit



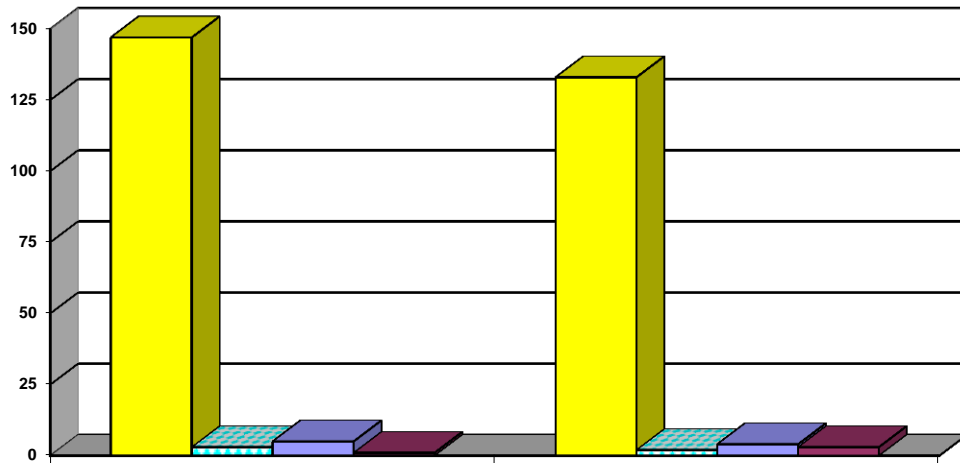
| | Jan, Feb, Mar 2015 | Jan, Feb, Mar 2014 |
|-----------------------------|--------------------|--------------------|
| Social Histories | 45 | 23 |
| Supplemental Social History | 4 | 6 |
| Remission/Review | 58 | 69 |

■ Social Histories

▨ Supplemental Social History

■ Remission/Review

Juvenile Caseload at End of Reporting Periods



| | March 2015 | March 2014 |
|-----------------------------|------------|------------|
| Probation | 147 | 133 |
| Continued under Supervision | 3 | 2 |
| Informal | 5 | 4 |
| Other | 1 | 3 |

■ Probation

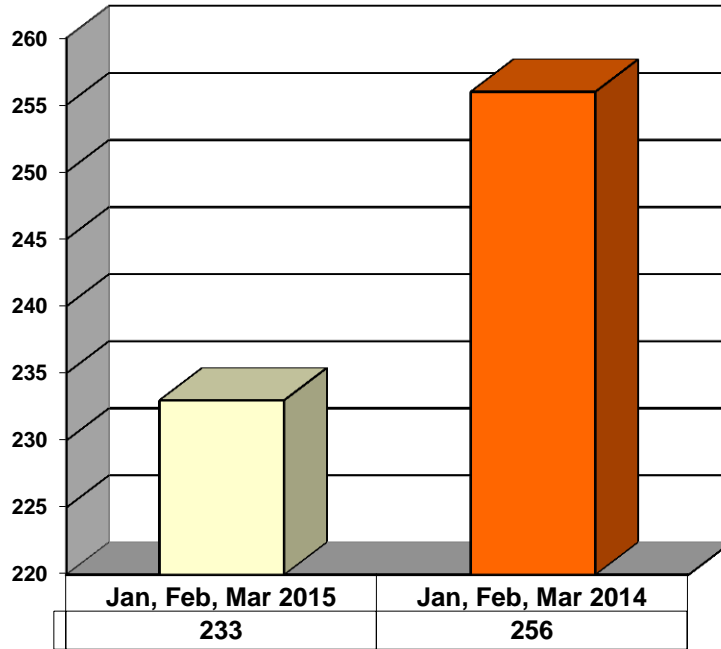
▨ Continued under Supervision

■ Informal

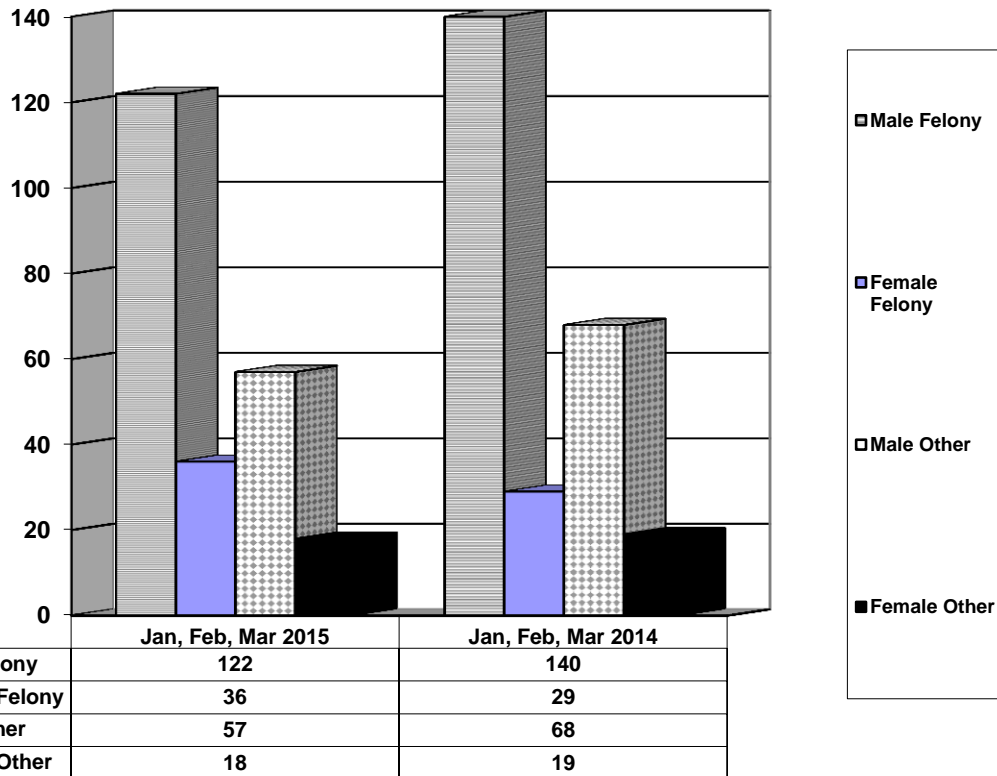
■ Other

**ADULT SUPERVISION INFORMATION
JANUARY, FEBRUARY AND MARCH 2015
(Compared to Prior Year)**

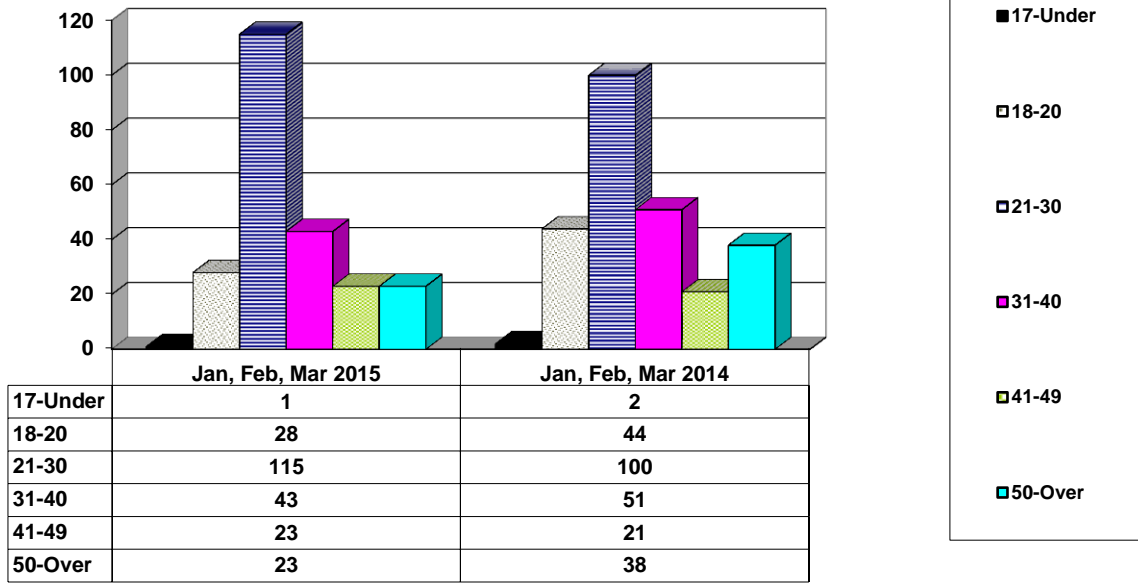
Adult Intakes Completed



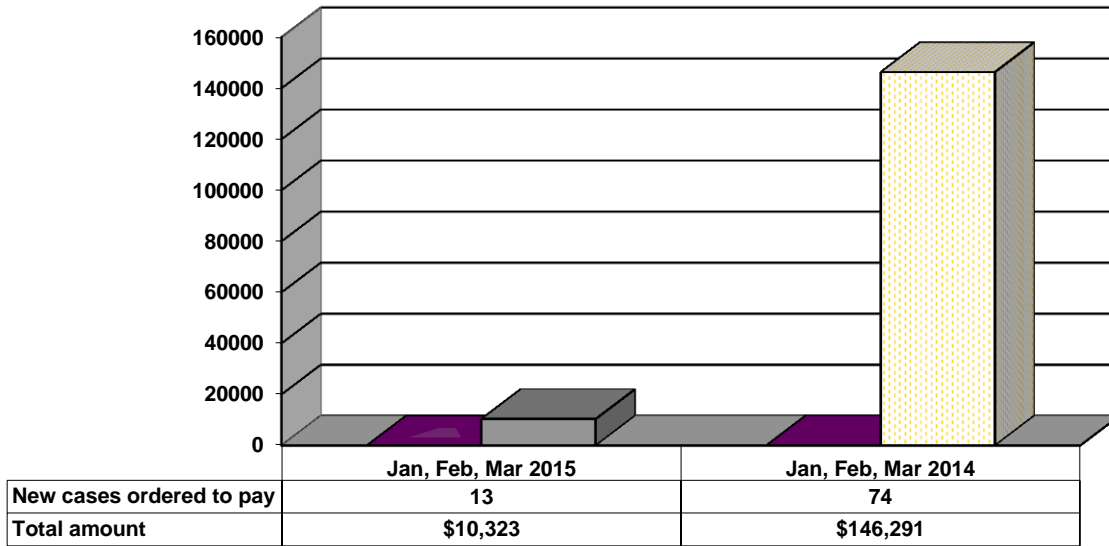
Demographics for Adult Intakes



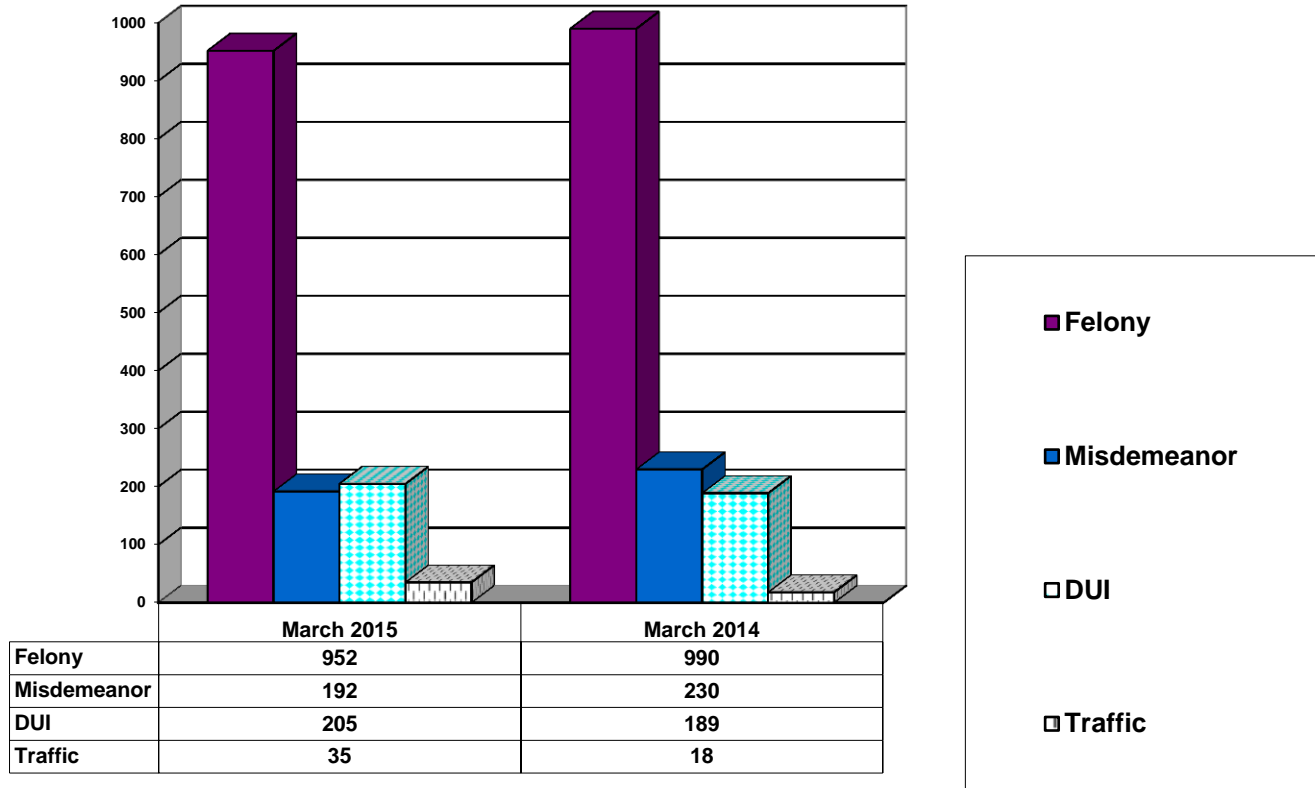
Age Demographics for Adult Intakes



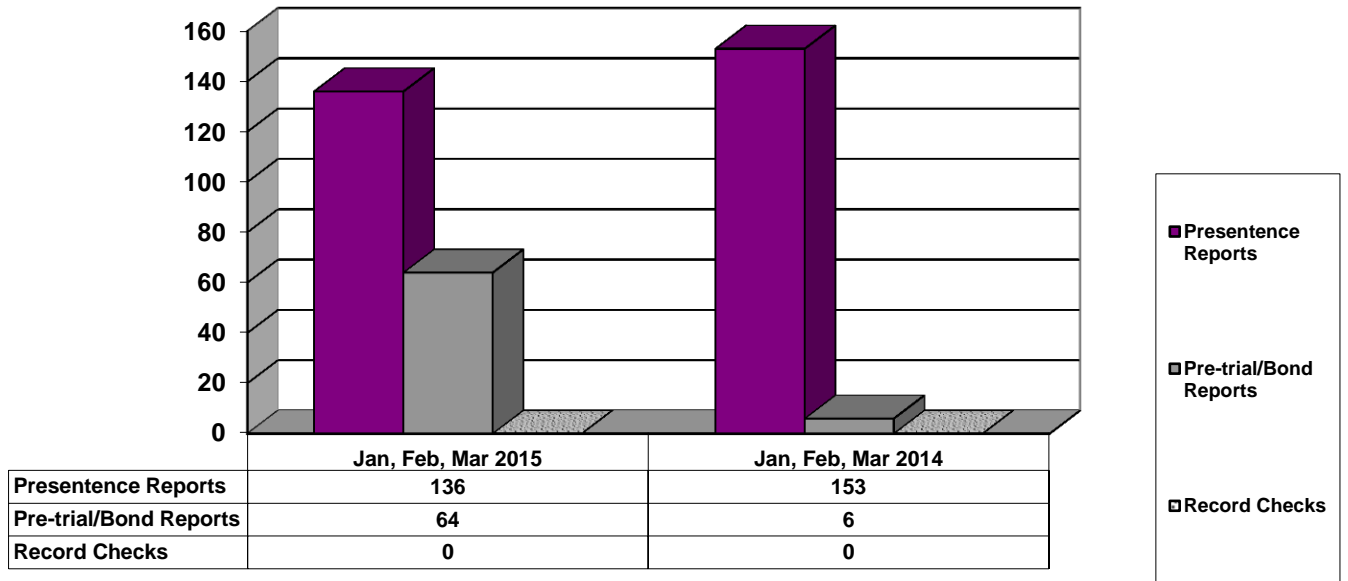
Restitution Ordered in New Adult Cases



Breakdown of Adult Caseload at End of Reporting Periods



Adult Investigations Completed



Commitments to Illinois Department of Corrections

