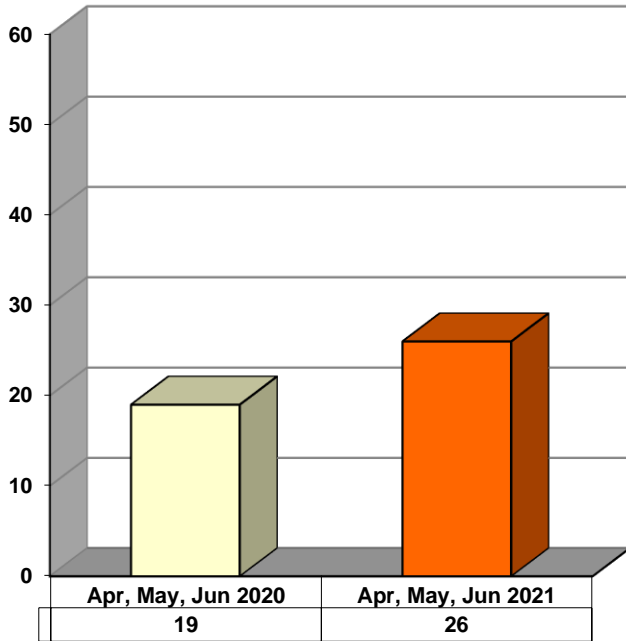
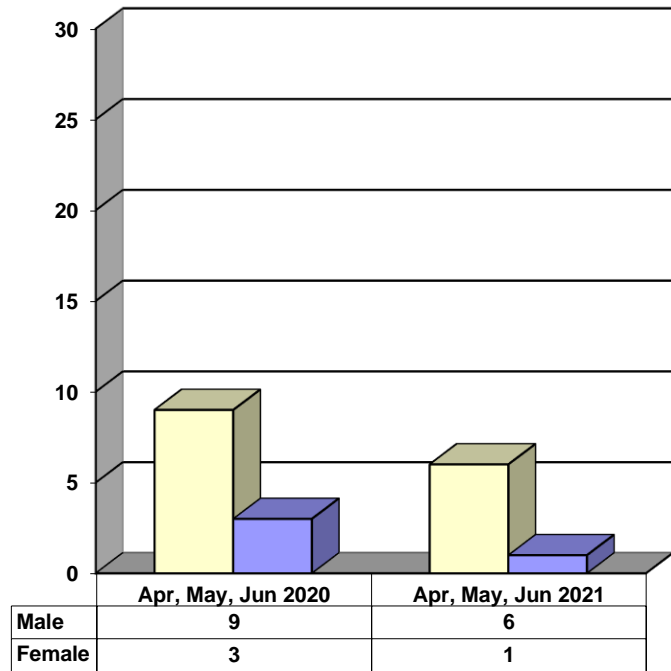


**JUVENILE SUPERVISION INFORMATION  
MONTHS OF APRIL, MAY, AND JUNE 2021  
(Compared to Prior Year)**

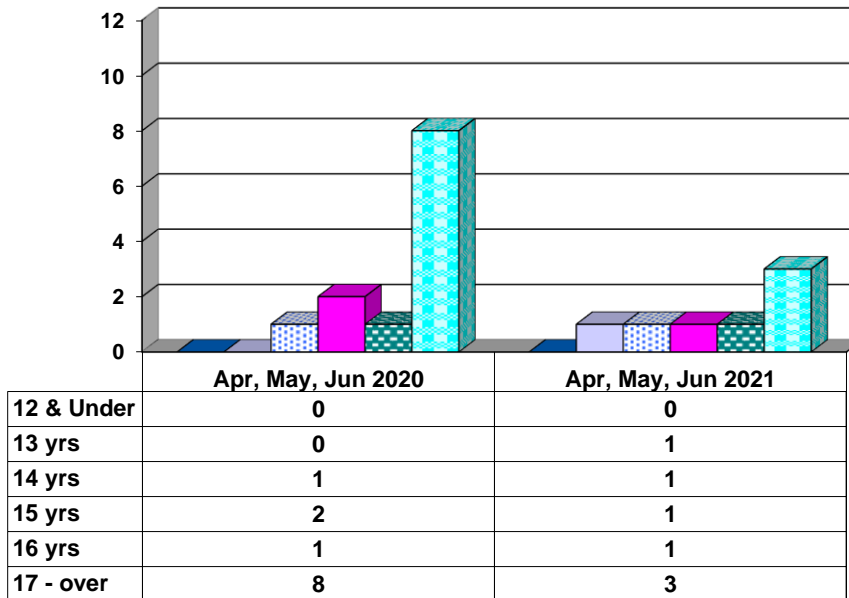
**Juvenile Delinquency Petitions Filed**



**Gender Demographics for Juvenile Admissions**

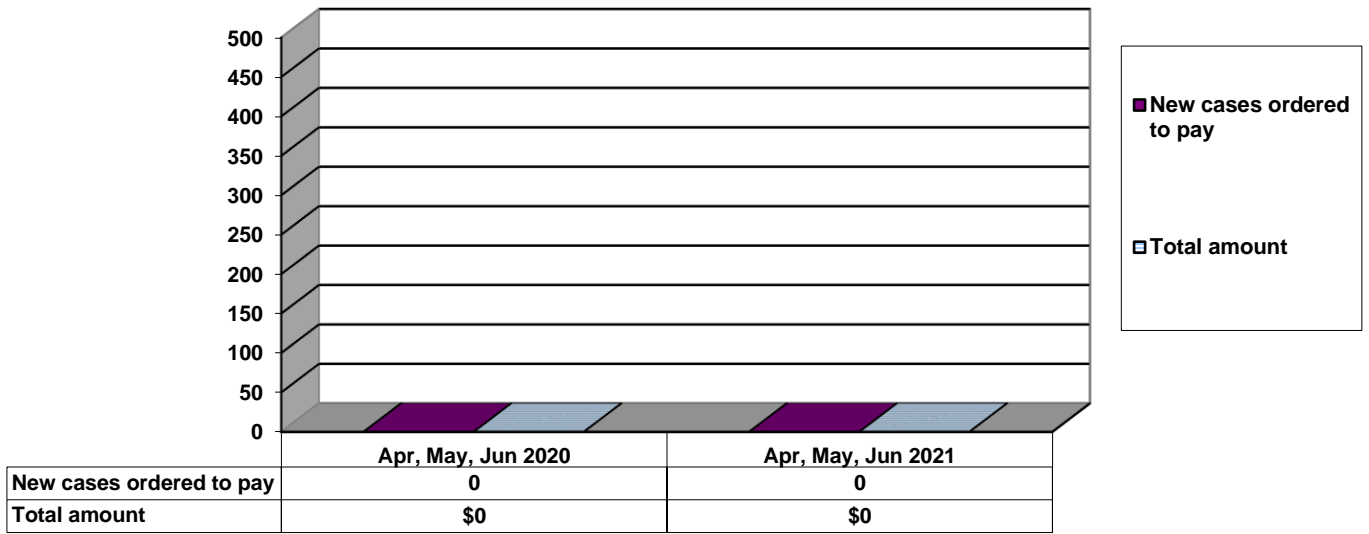


**Age Demographics for Juvenile Admissions**

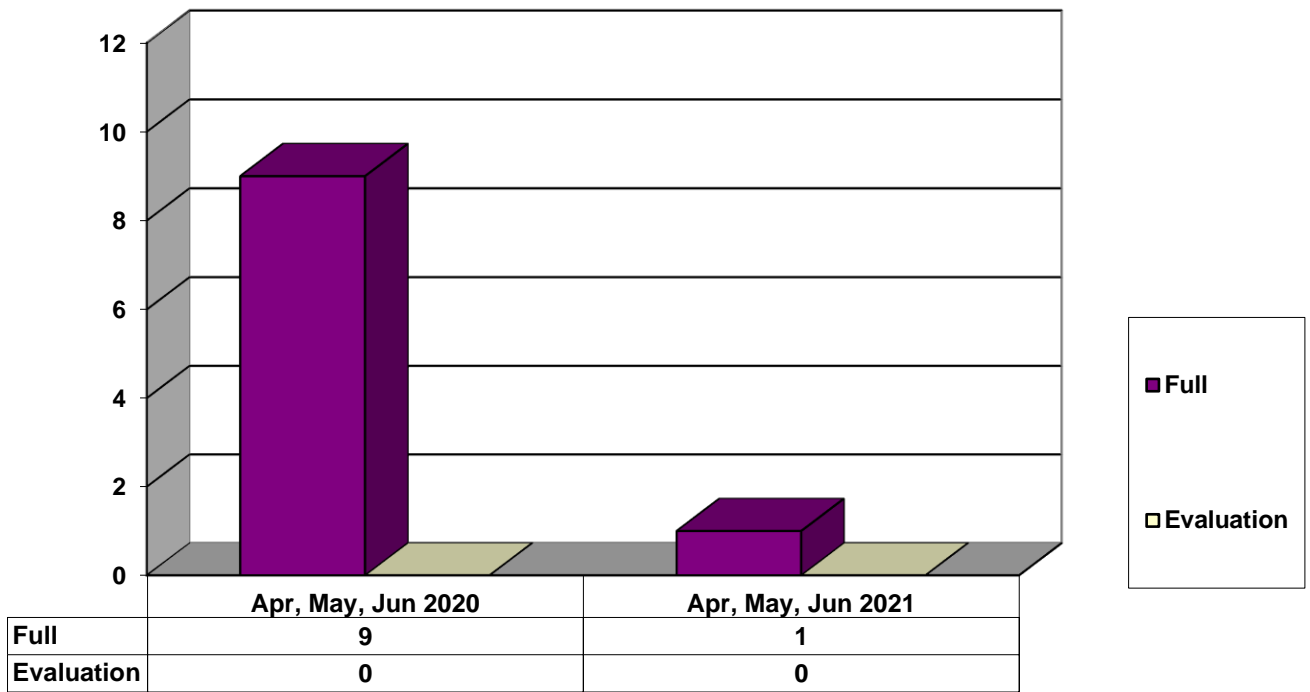


12 & Under
  13 yrs
  14 yrs
  15 yrs
  16 yrs
  17 - over

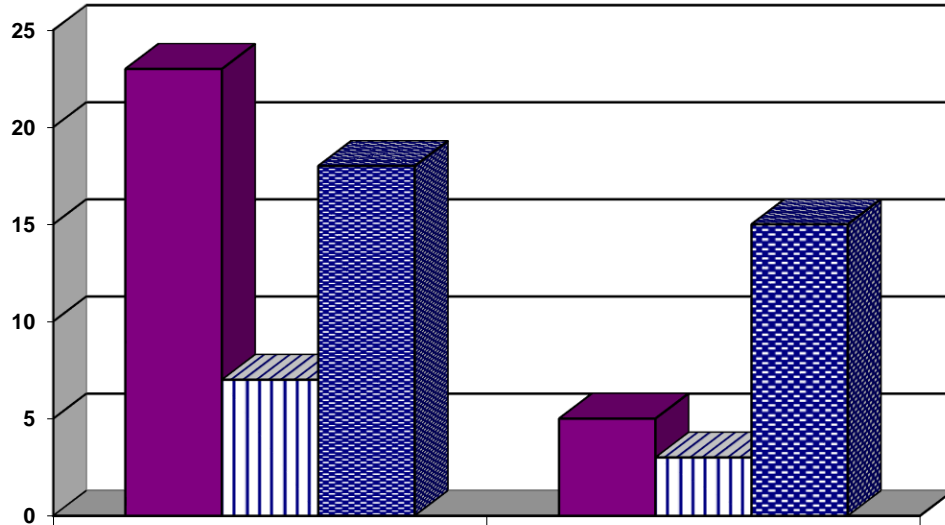
### Restitution Ordered in New Juvenile Cases



### Commitments to Illinois Department of Juvenile Justice



### Investigations Completed by Juvenile Division



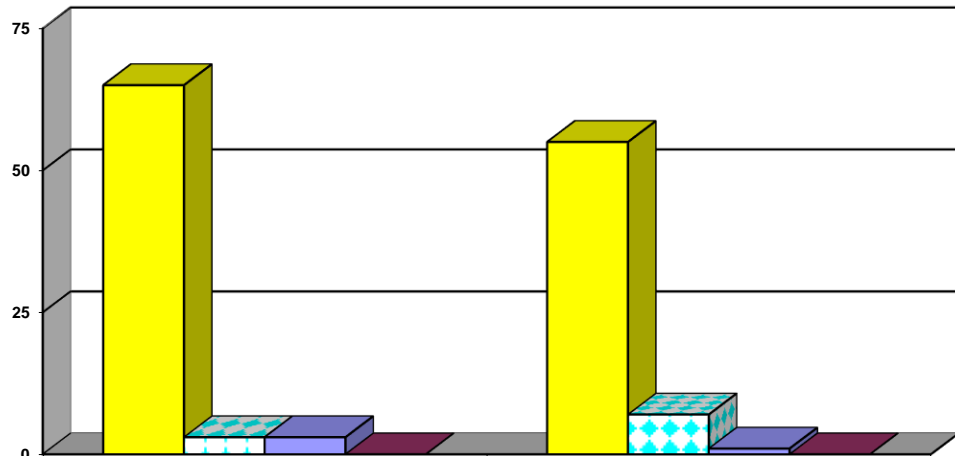
	Apr, May, Jun 2020	Apr, May, Jun 2021
Social Histories	23	5
Supplemental Social History	7	3
Remission/Review	18	15

■ Social Histories

▨ Supplemental Social History

▨ Remission/Review

### Juvenile Caseload at End of Reporting Periods



	June 2020	June 2021
Probation	65	55
Continued under Supervision	3	7
Informal	3	1
Other	0	0

■ Probation

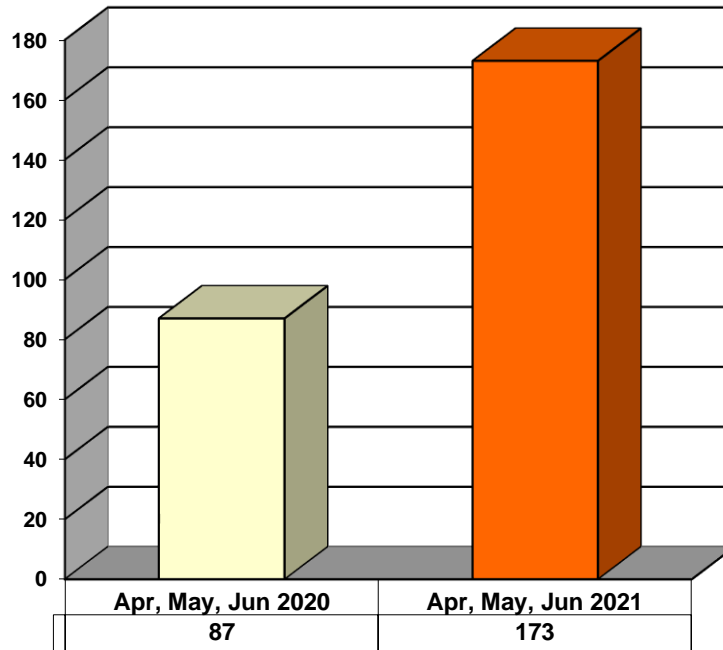
▨ Continued under Supervision

▨ Informal

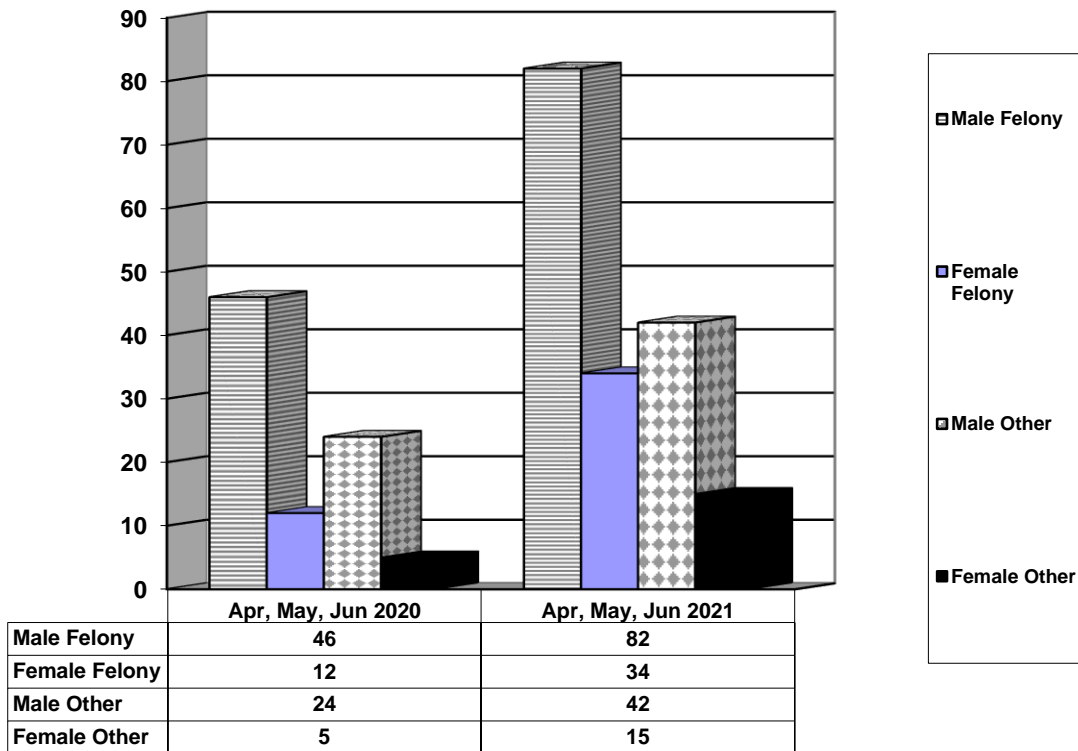
■ Other

**ADULT SUPERVISION INFORMATION  
MONTHS OF APRIL, MAY, AND JUNE 2021  
(Compared to Prior Year)**

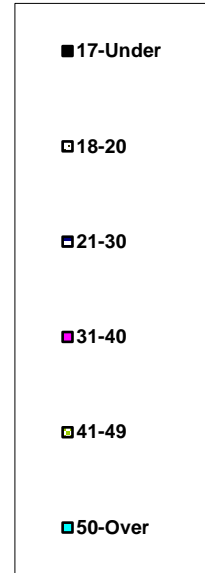
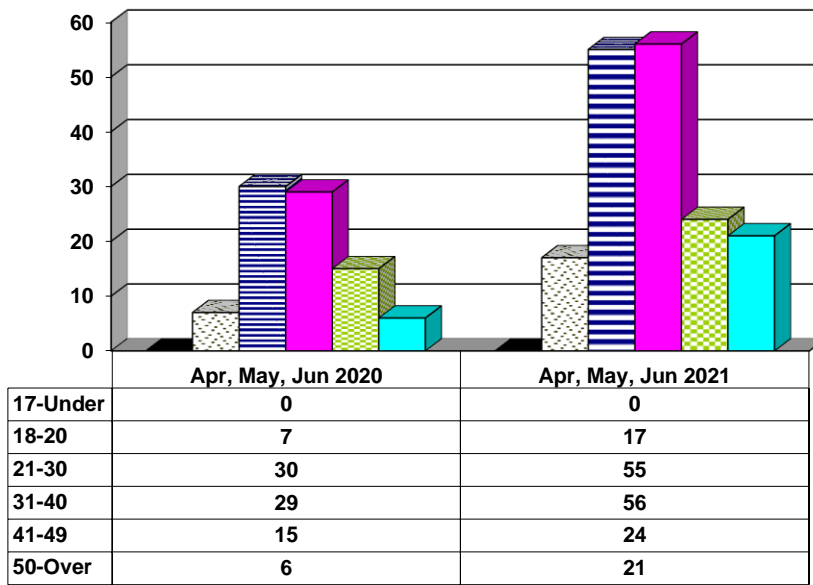
**Adult Intakes Completed**



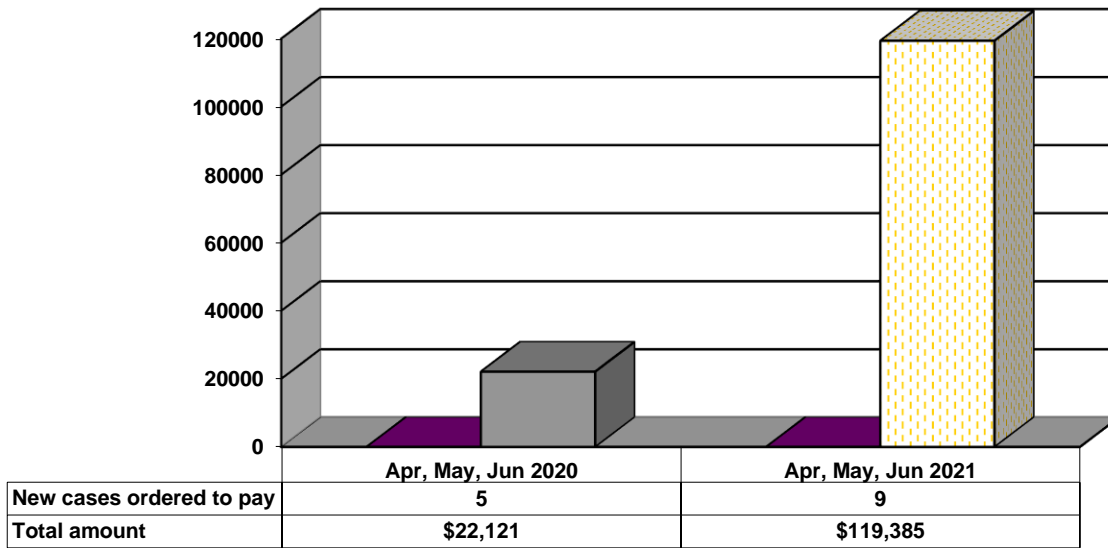
**Gender Demographics for Adult Intakes**



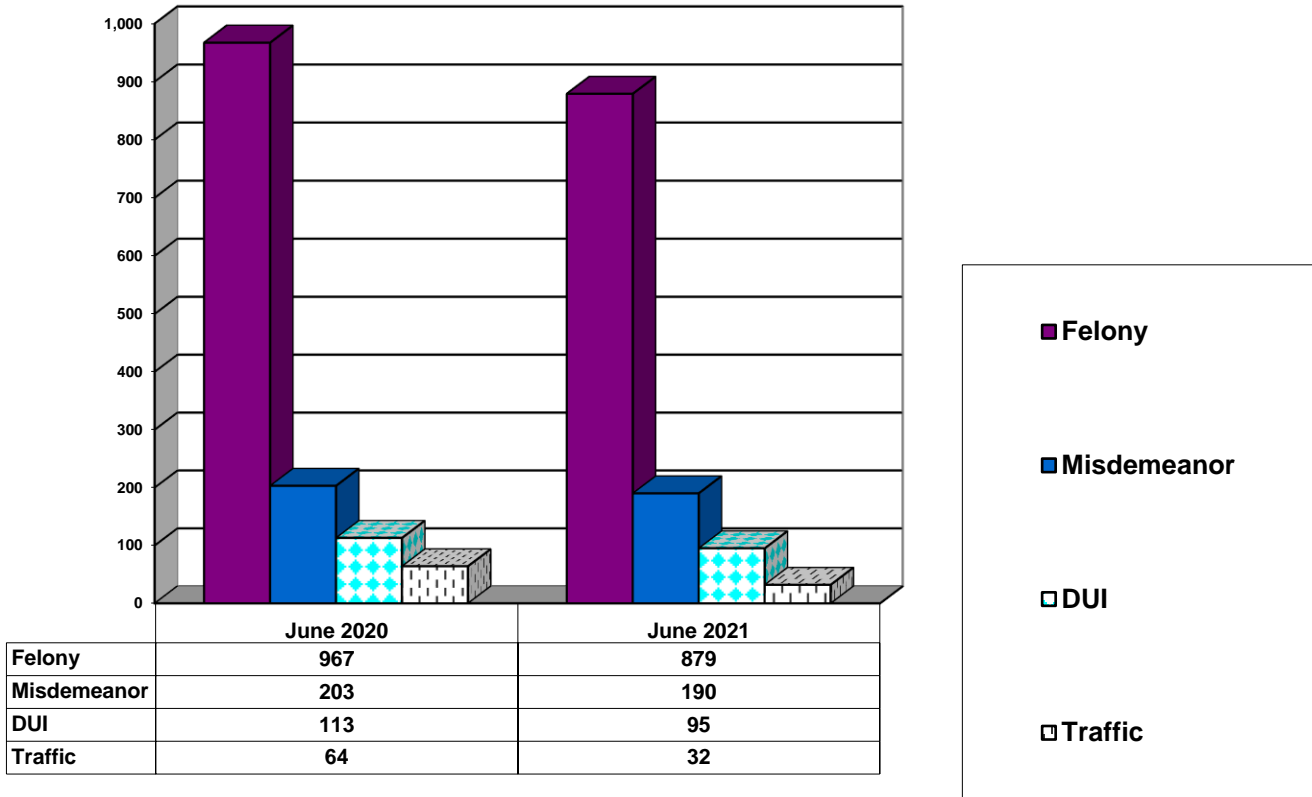
### Age Demographics for Adult Intakes



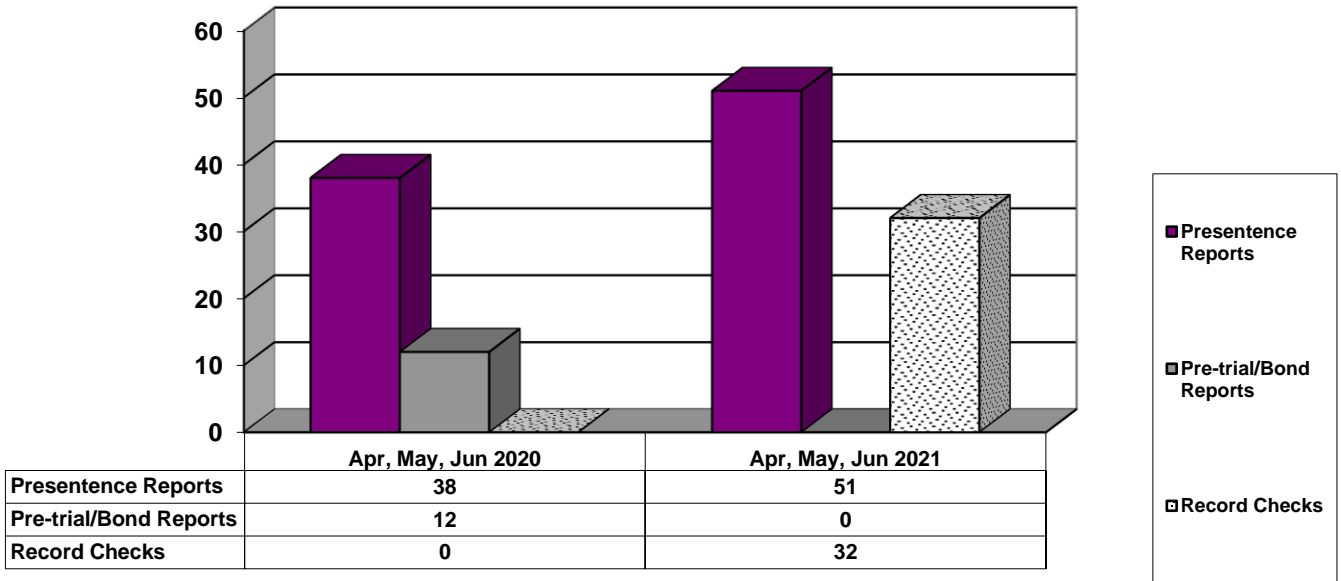
### Restitution Ordered in New Adult Cases



### Breakdown of Adult Caseload at End of Reporting Periods



### Adult Investigations Completed



**Commitments to Illinois Department of Corrections**

