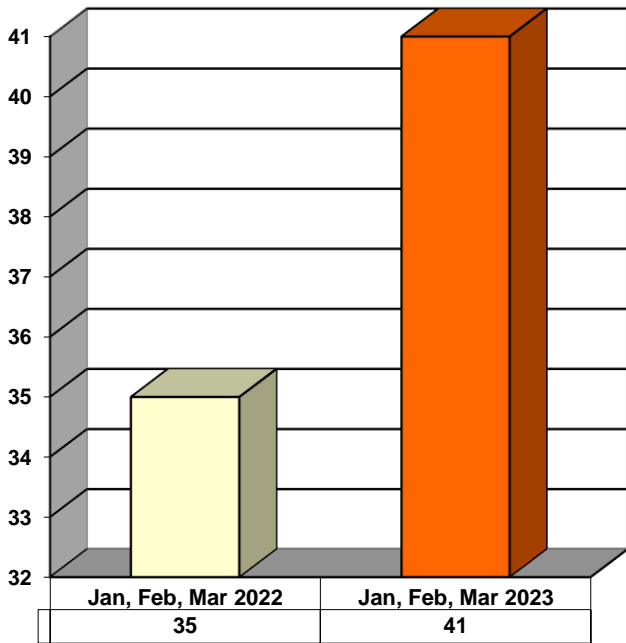
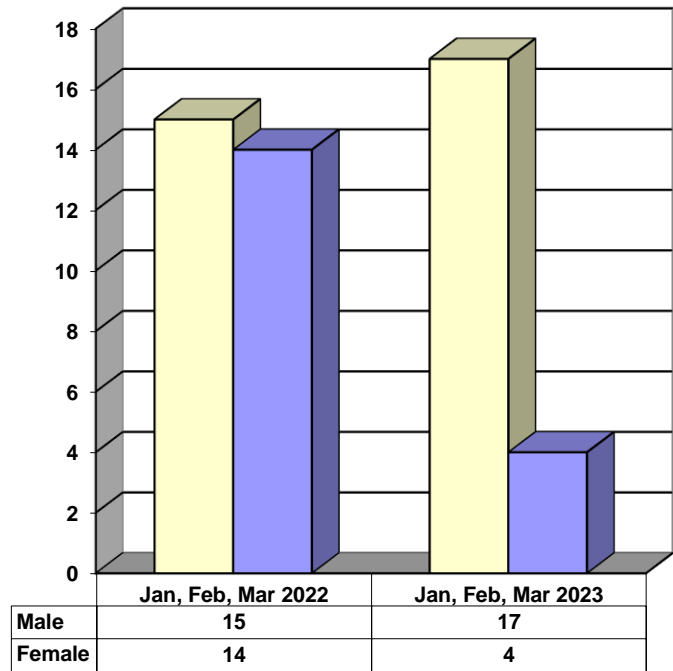


**JUVENILE SUPERVISION INFORMATION  
MONTHS OF JANUARY, FEBRUARY, AND MARCH 2023  
(Compared to Prior Year)**

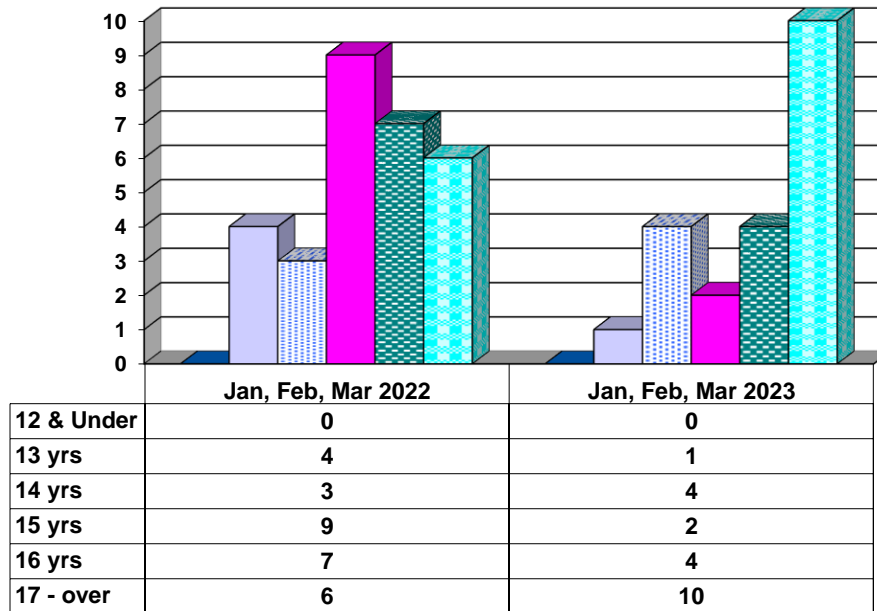
**Juvenile Delinquency Petitions Filed**



**Gender Demographics for Juvenile Admissions**

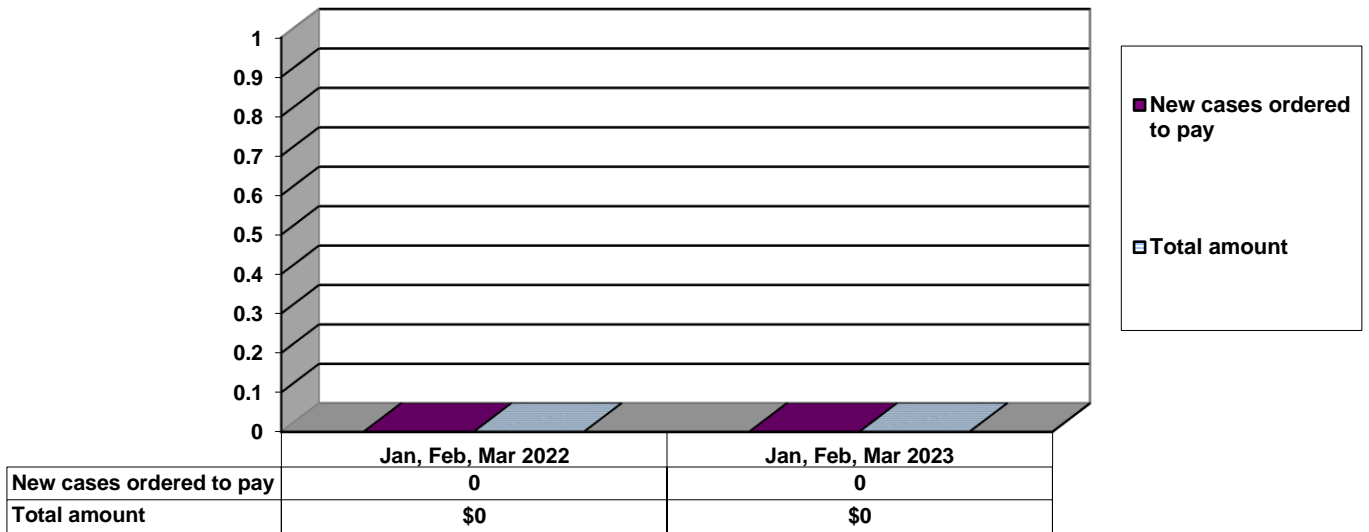


**Age Demographics for Juvenile Admissions**

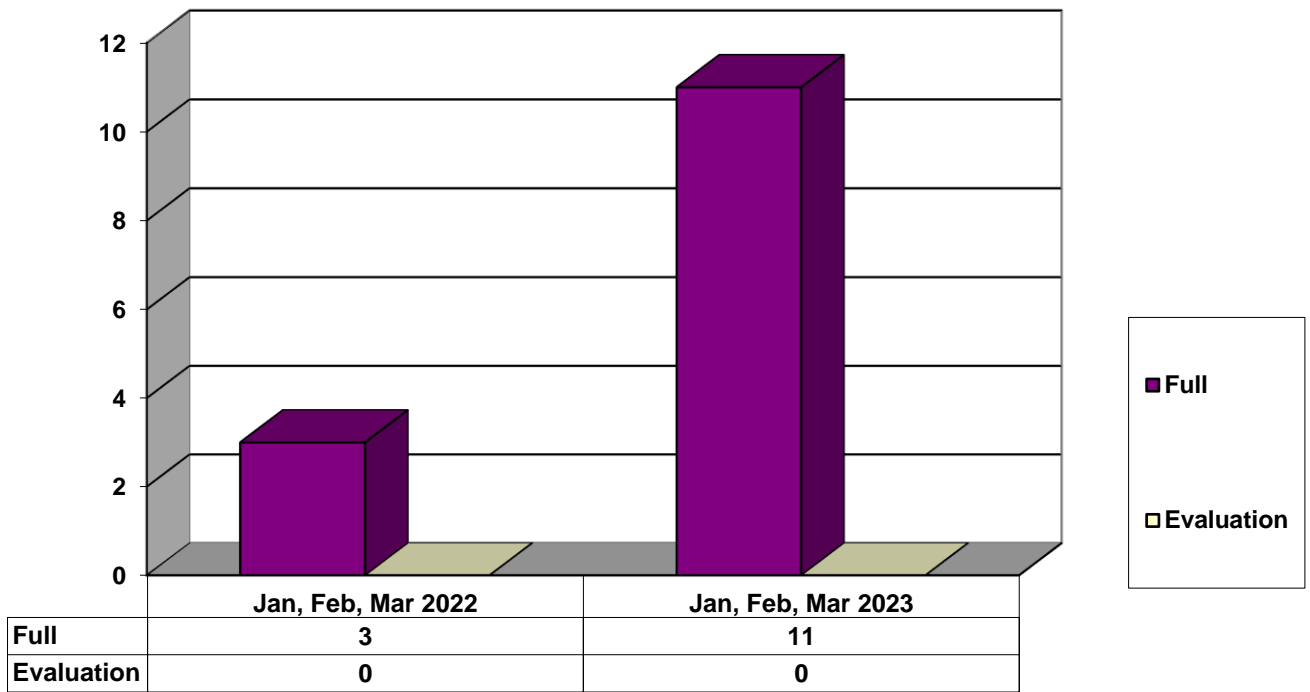


12 & Under
  13 yrs
  14 yrs
  15 yrs
  16 yrs
  17 - over

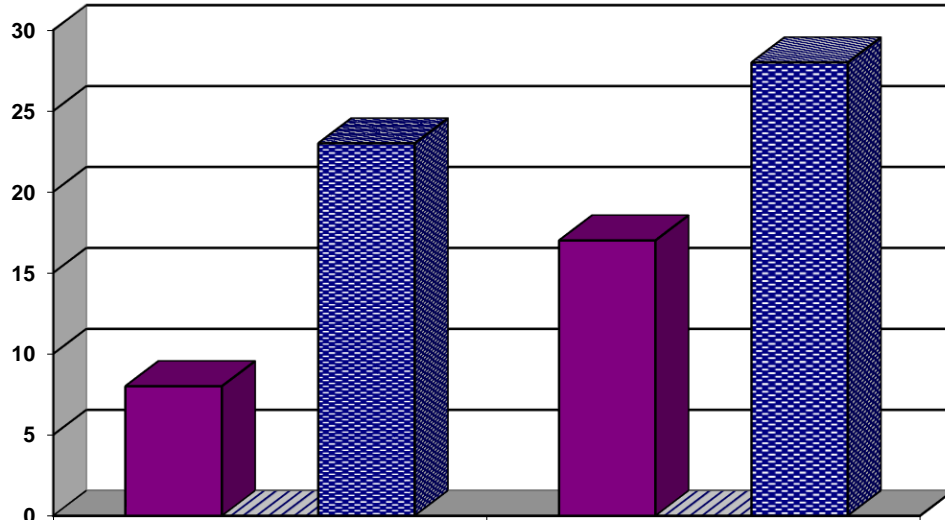
### Restitution Ordered in New Juvenile Cases



### Commitments to Illinois Department of Juvenile Justice



### Investigations Completed by Juvenile Division



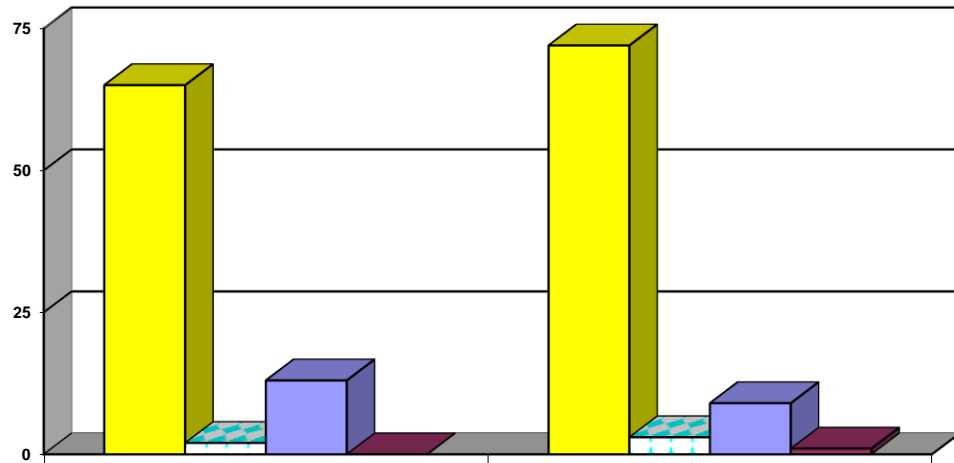
|                             | Jan, Feb, Mar 2022 | Jan, Feb, Mar 2023 |
|-----------------------------|--------------------|--------------------|
| Social Histories            | 8                  | 17                 |
| Supplemental Social History | 0                  | 0                  |
| Remission/Review            | 23                 | 28                 |

■ Social Histories

▨ Supplemental Social History

■ Remission/Review

### Juvenile Caseload at End of Reporting Periods



|                             | March 2022 | March 2023 |
|-----------------------------|------------|------------|
| Probation                   | 65         | 72         |
| Continued under Supervision | 2          | 3          |
| Informal                    | 13         | 9          |
| Other                       | 0          | 1          |

■ Probation

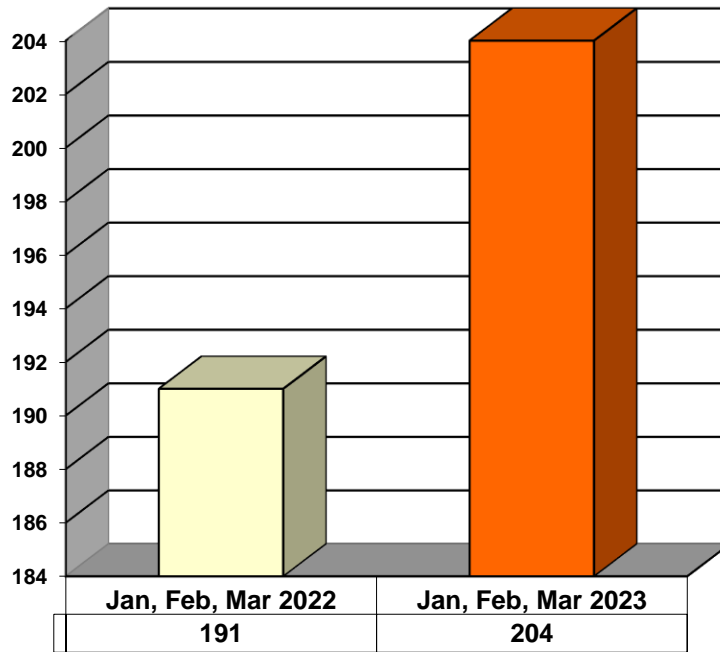
▨ Continued under Supervision

■ Informal

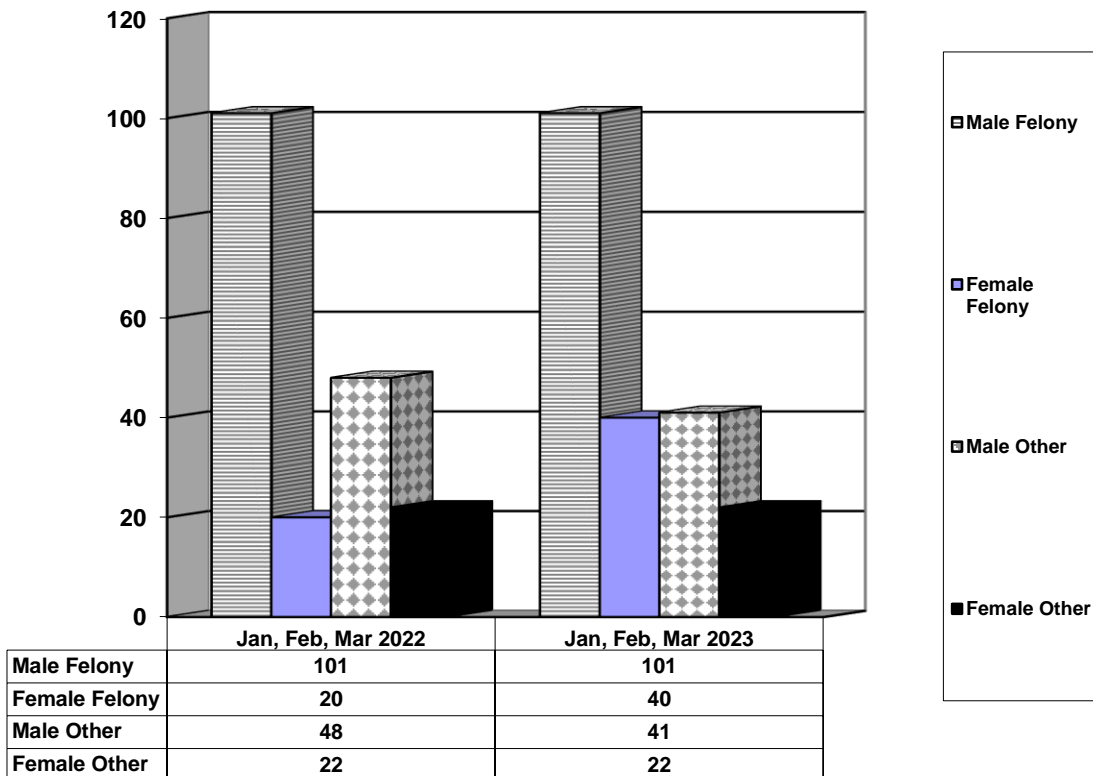
■ Other

**ADULT SUPERVISION INFORMATION  
MONTHS OF JANUARY, FEBRUARY, AND MARCH 2023  
(Compared to Prior Year)**

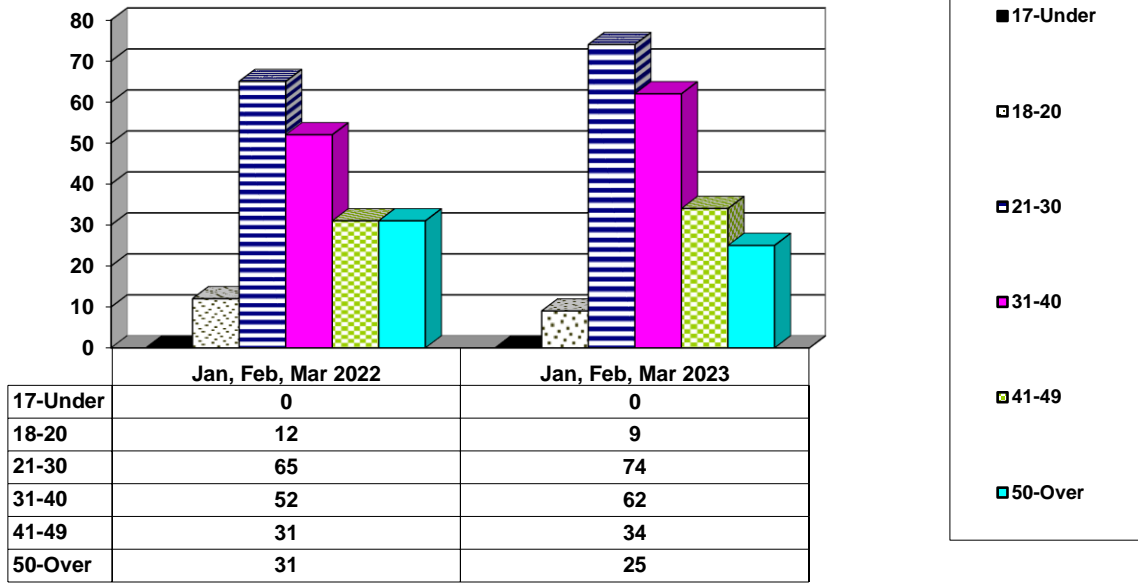
**Adult Intakes Completed**



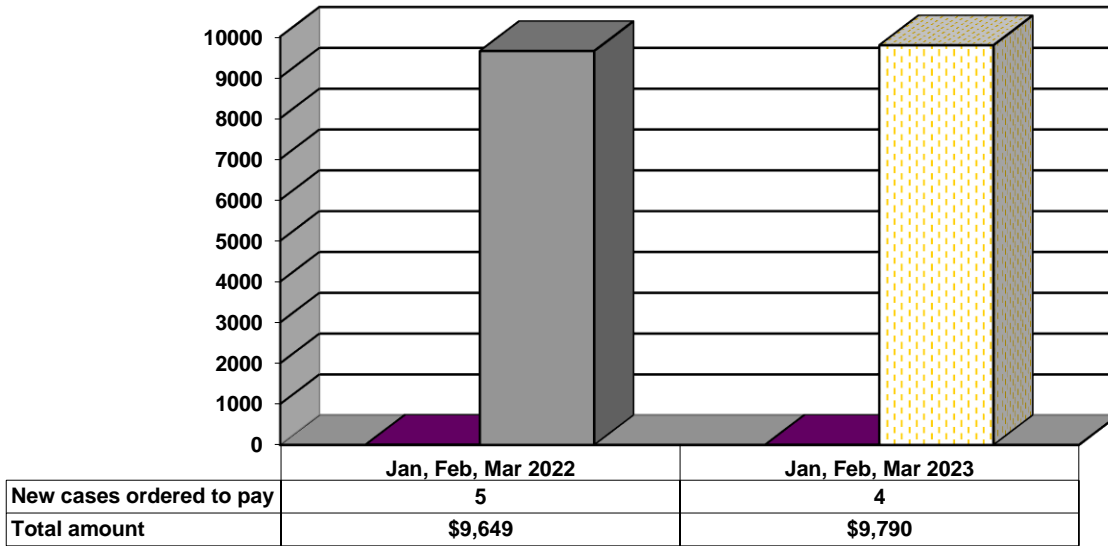
**Gender Demographics for Adult Intakes**



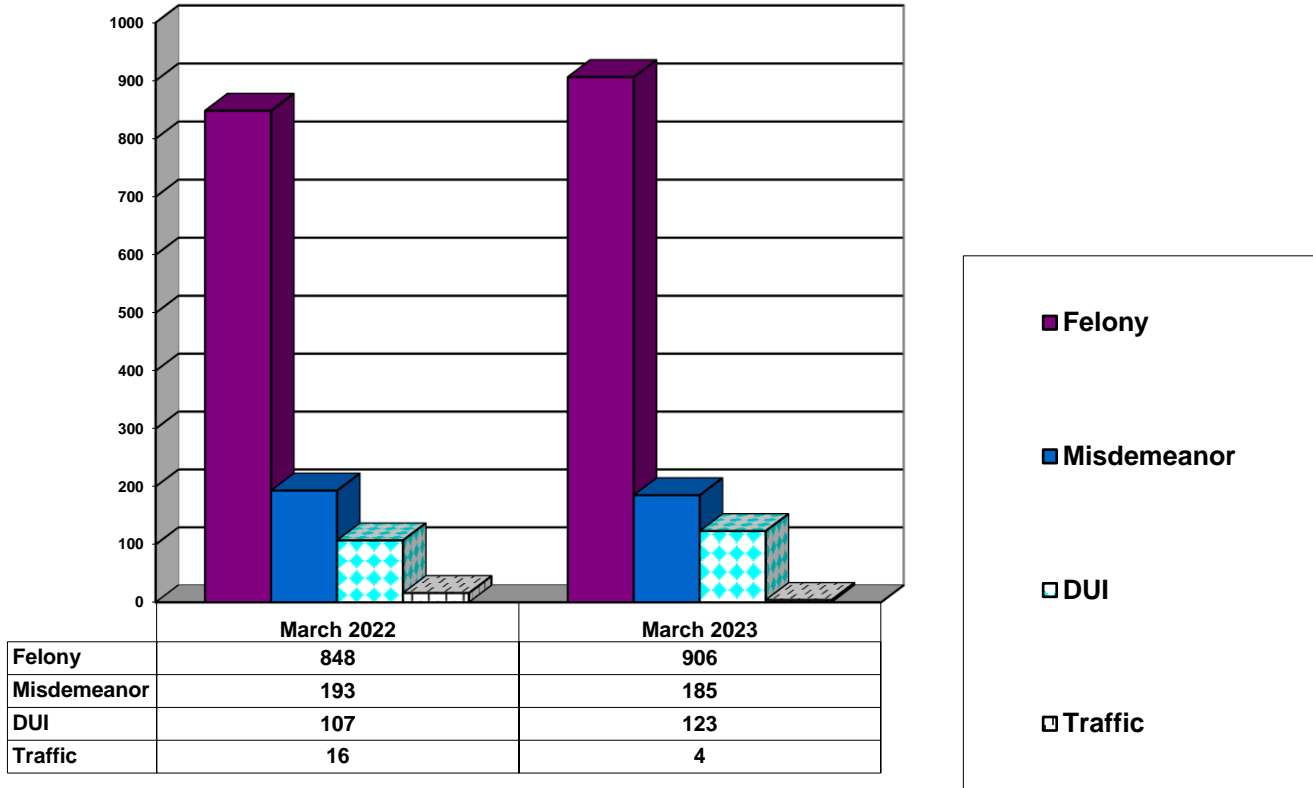
### Age Demographics for Adult Intakes



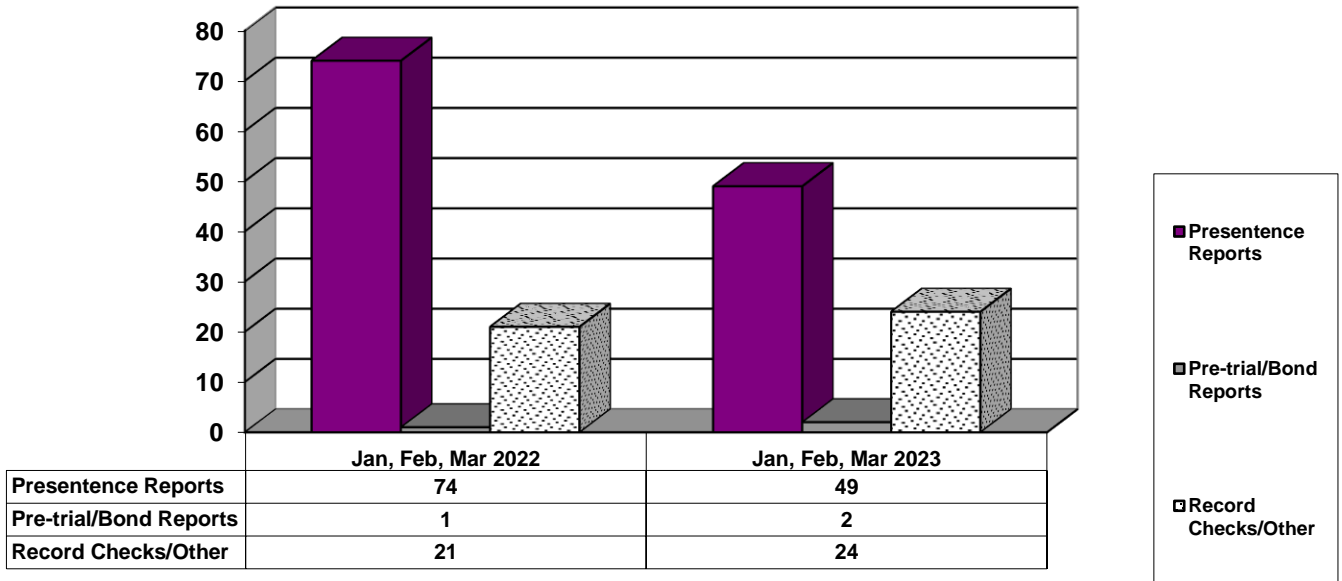
### Restitution Ordered in New Adult Cases



### Breakdown of Adult Caseload at End of Reporting Periods



### Adult Investigations Completed



### Commitments to Illinois Department of Corrections

