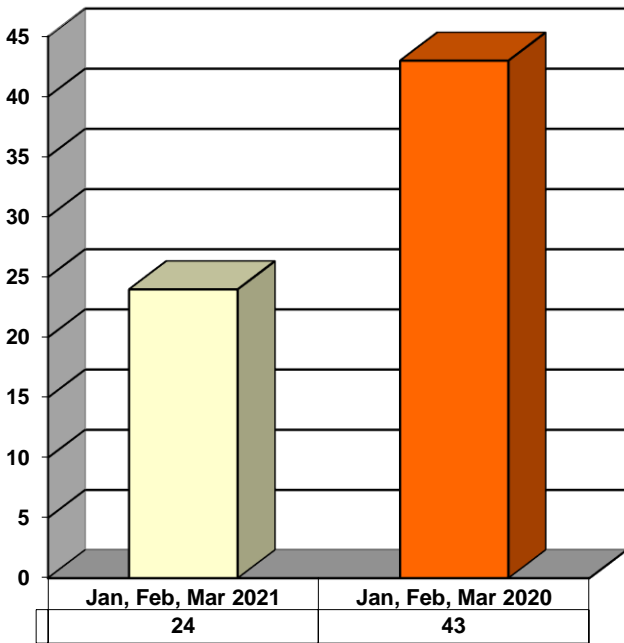
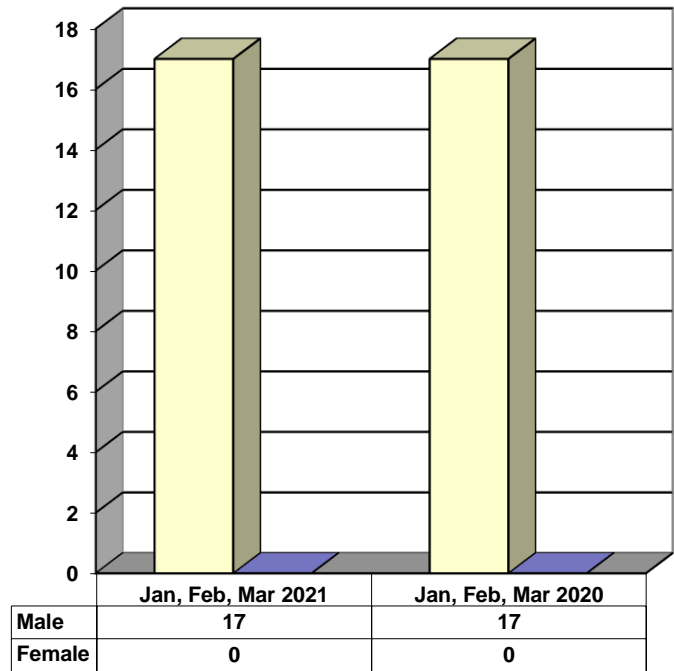


**JUVENILE SUPERVISION INFORMATION**  
**MONTHS OF JANUARY, FEBRUARY, AND MARCH 2021**  
 (Compared to Prior Year)

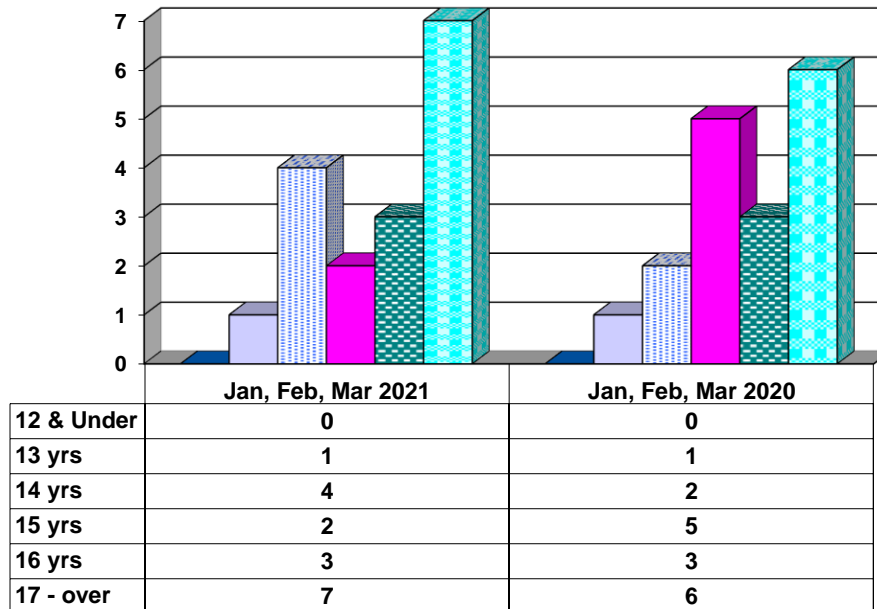
**Juvenile Delinquency Petitions Filed**



**Gender Demographics for Juvenile Admissions**

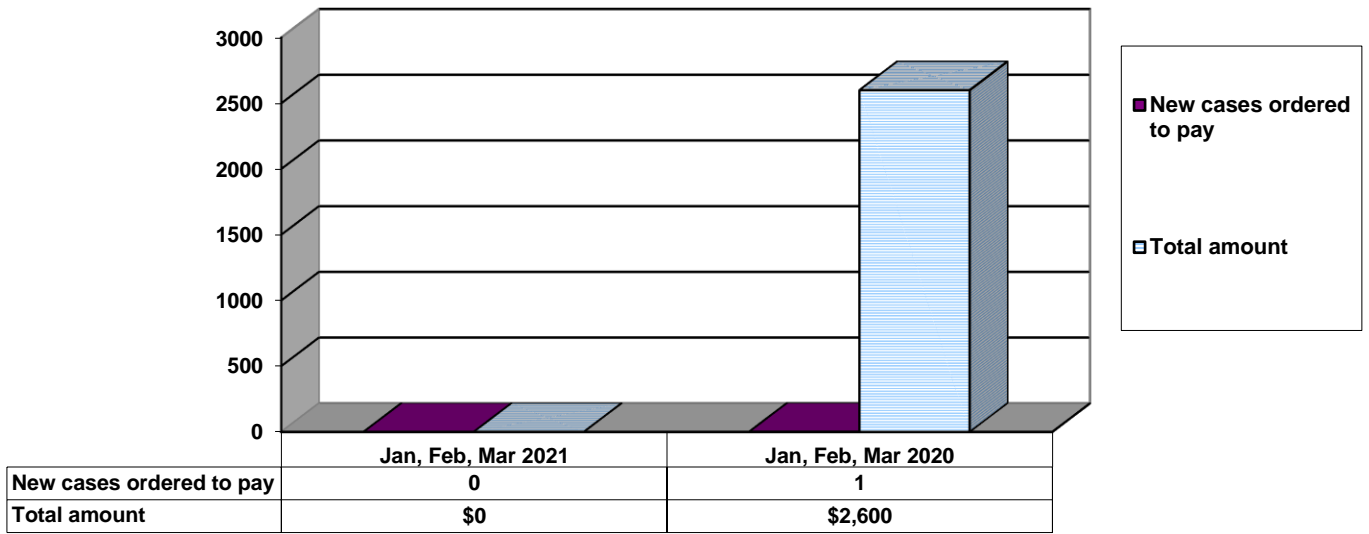


**Age Demographics for Juvenile Admissions**

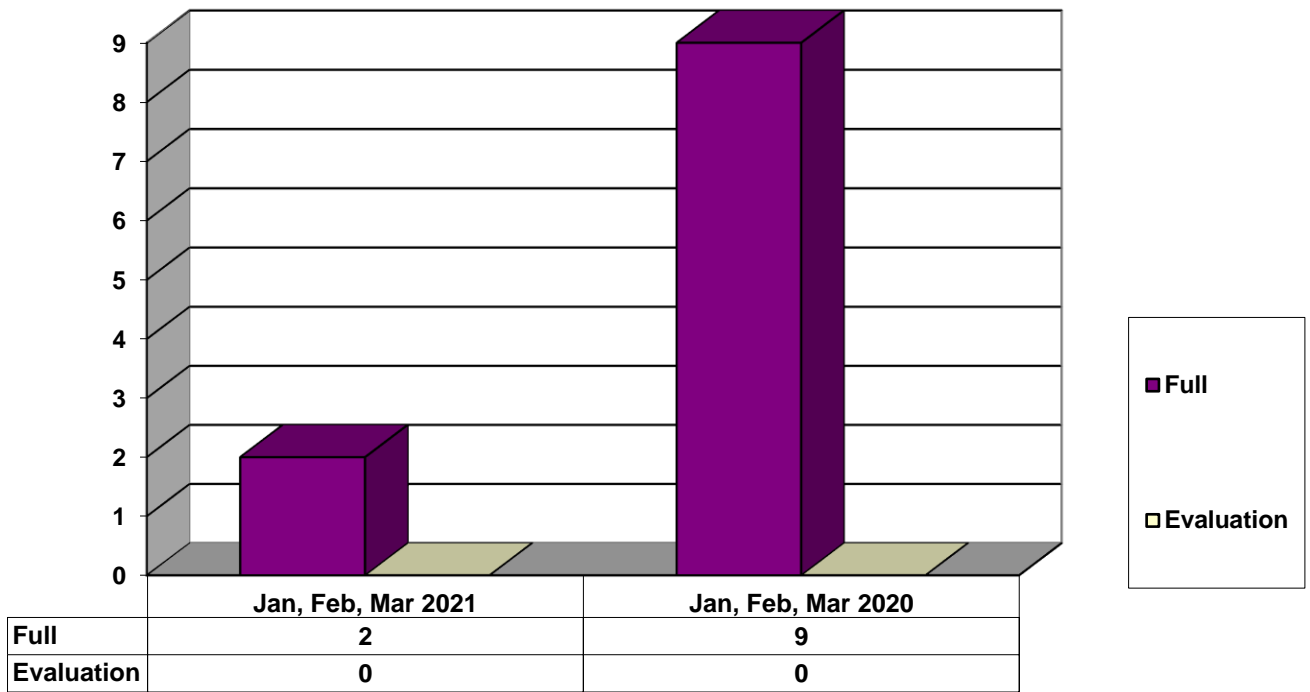


12 & Under
  13 yrs
  14 yrs
  15 yrs
  16 yrs
  17 - over

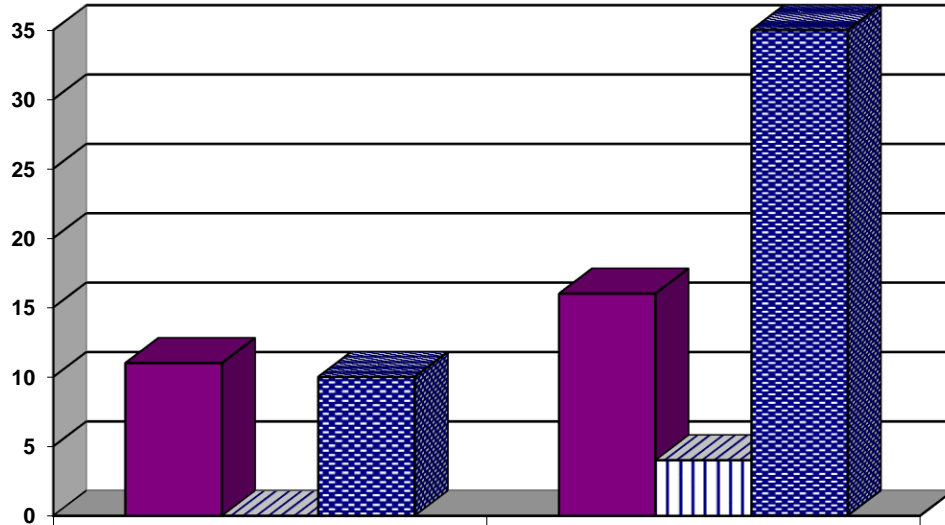
### Restitution Ordered in New Juvenile Cases



### Commitments to Illinois Department of Juvenile Justice



### Investigations Completed by Juvenile Division



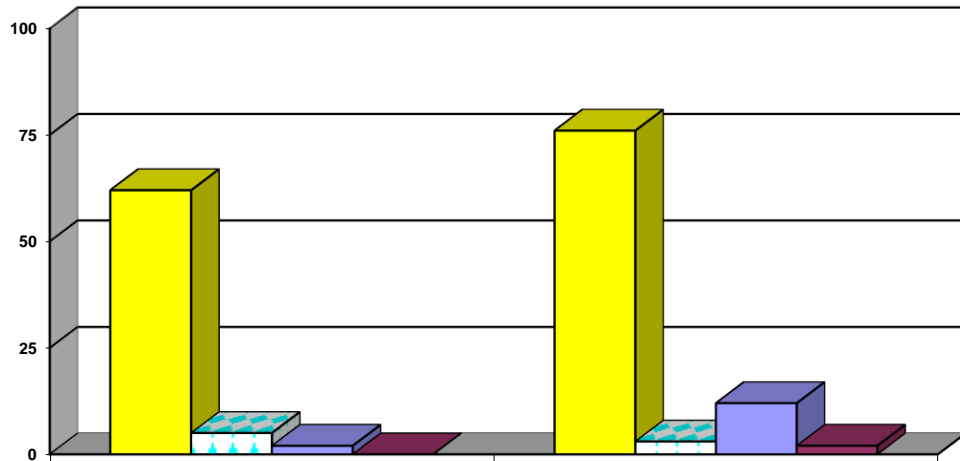
	Jan, Feb, Mar 2021	Jan, Feb, Mar 2020
Social Histories	11	16
Supplemental Social History	0	4
Remission/Review	10	35

■ Social Histories

■ Supplemental Social History

■ Remission/Review

### Juvenile Caseload at End of Reporting Periods



	March 2021	March 2020
Probation	62	76
Continued under Supervision	5	3
Informal	2	12
Other	0	2

■ Probation

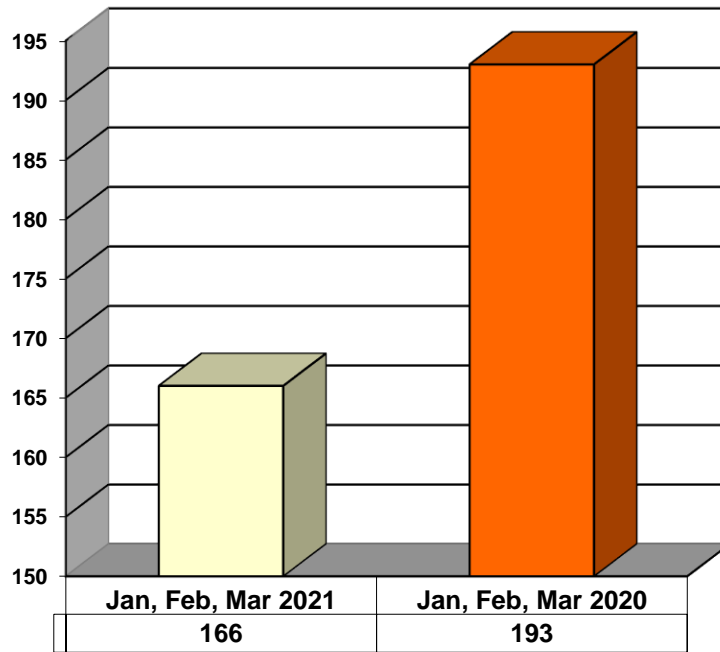
■ Continued under Supervision

■ Informal

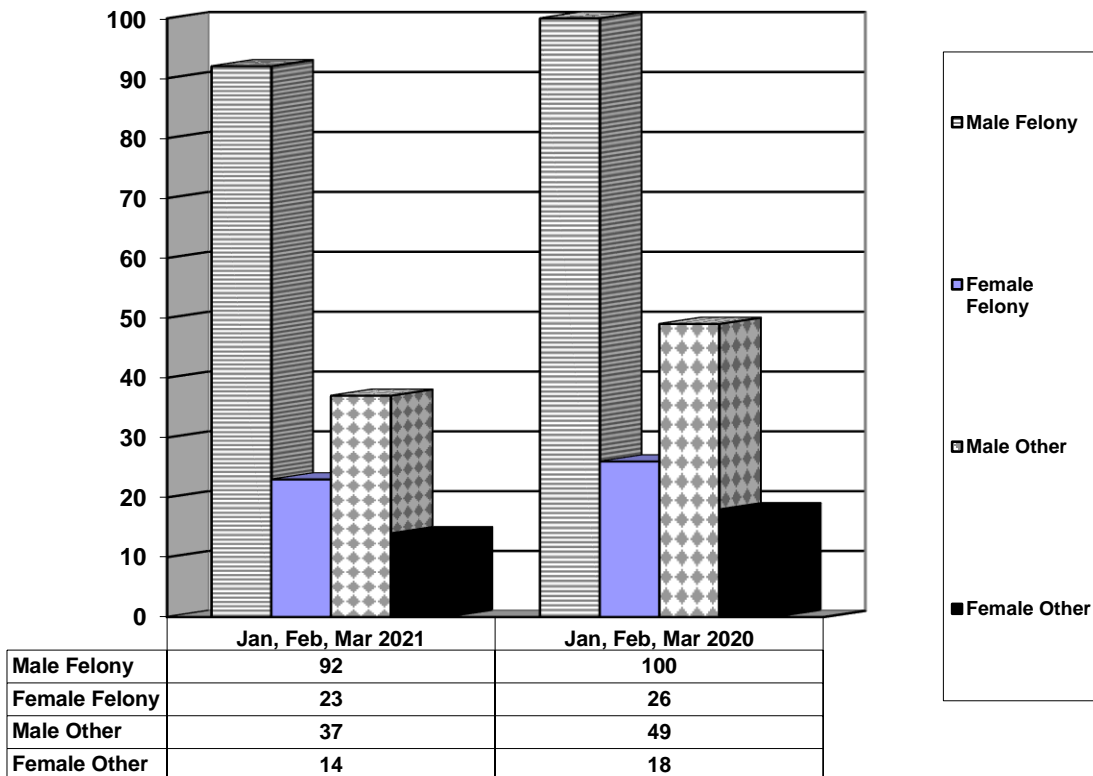
■ Other

**ADULT SUPERVISION INFORMATION  
MONTHS OF JANUARY, FEBRUARY, AND MARCH 2021  
(Compared to Prior Year)**

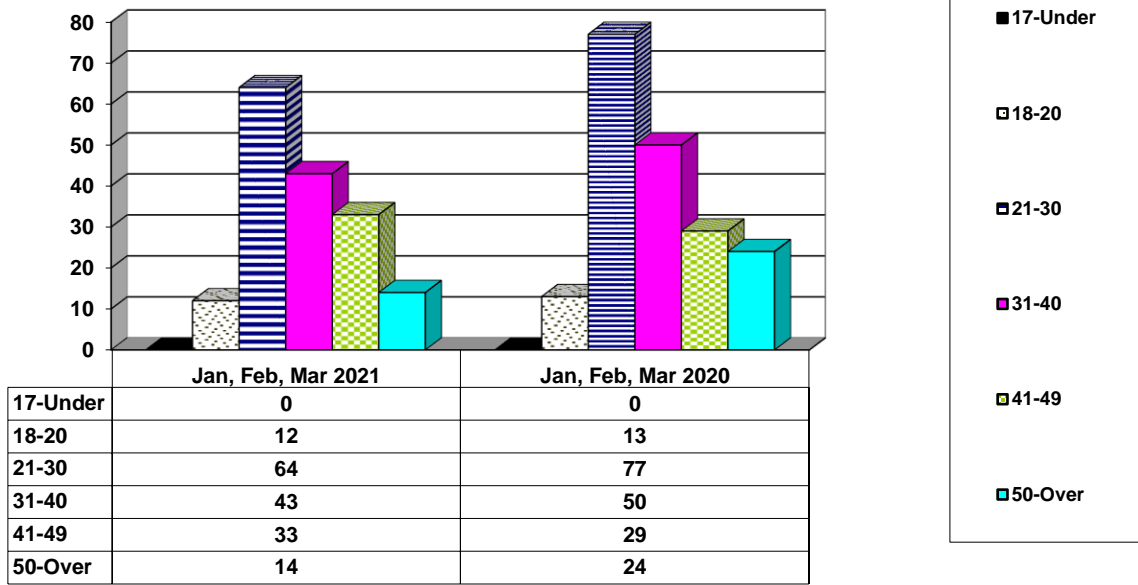
**Adult Intakes Completed**



**Gender Demographics for Adult Intakes**



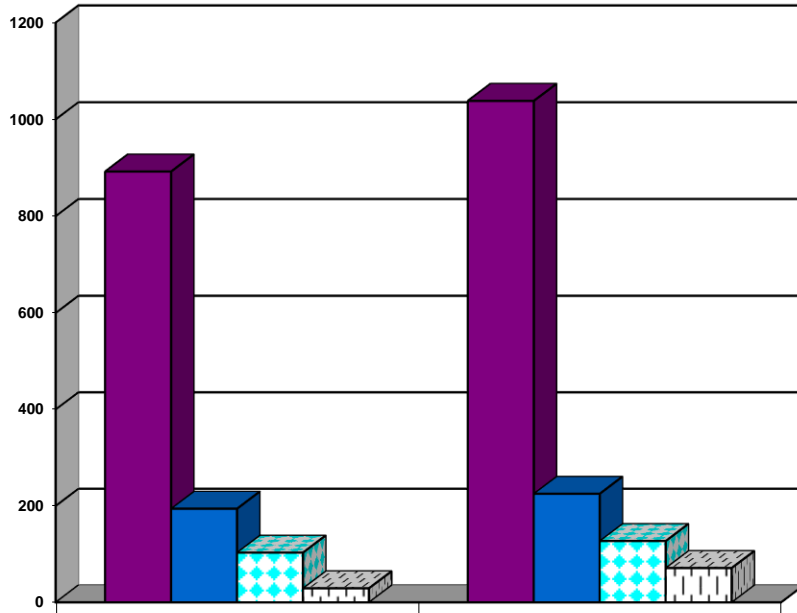
### Age Demographics for Adult Intakes



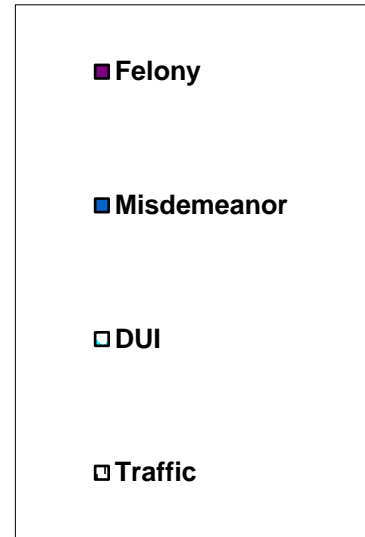
### Restitution Ordered in New Adult Cases



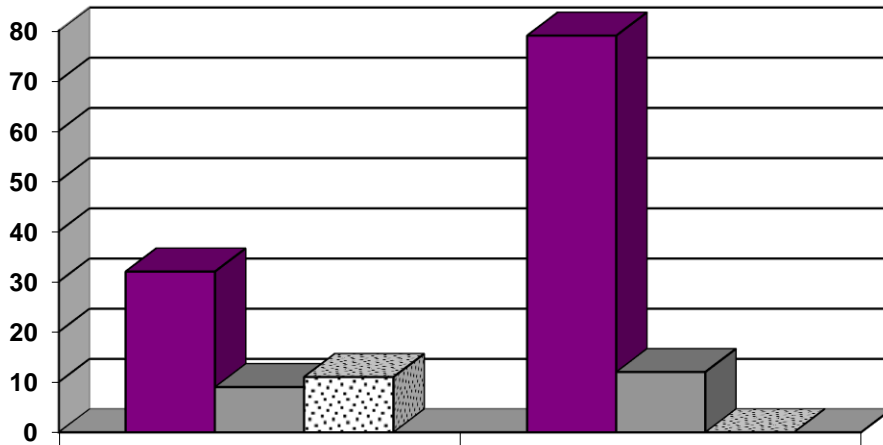
### Breakdown of Adult Caseload at End of Reporting Periods



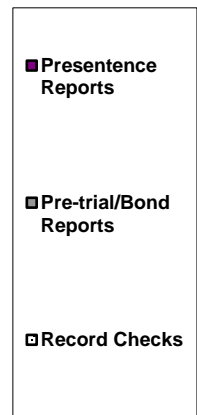
	March 2021	March 2020
<b>Felony</b>	<b>892</b>	<b>1038</b>
<b>Misdemeanor</b>	<b>194</b>	<b>225</b>
<b>DUI</b>	<b>103</b>	<b>127</b>
<b>Traffic</b>	<b>29</b>	<b>71</b>



### Adult Investigations Completed



	Jan, Feb, Mar 2021	Jan, Feb, Mar 2020
<b>Presentence Reports</b>	<b>32</b>	<b>79</b>
<b>Pre-trial/Bond Reports</b>	<b>9</b>	<b>12</b>
<b>Record Checks</b>	<b>11</b>	<b>0</b>



### Commitments to Illinois Department of Corrections

