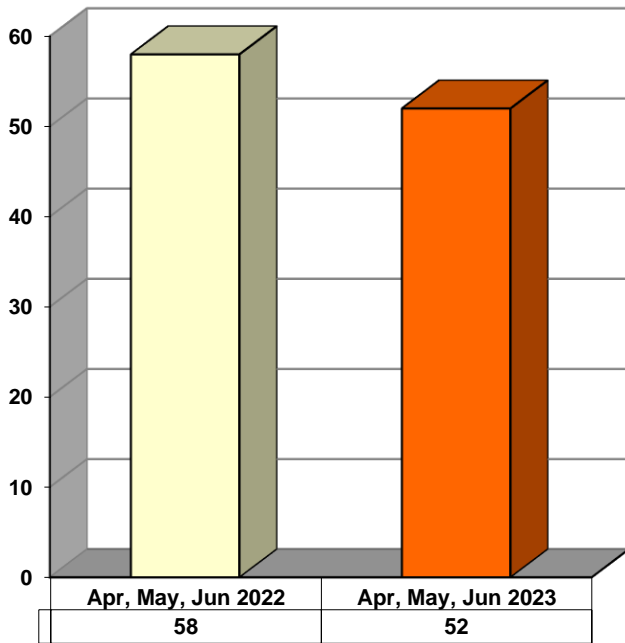
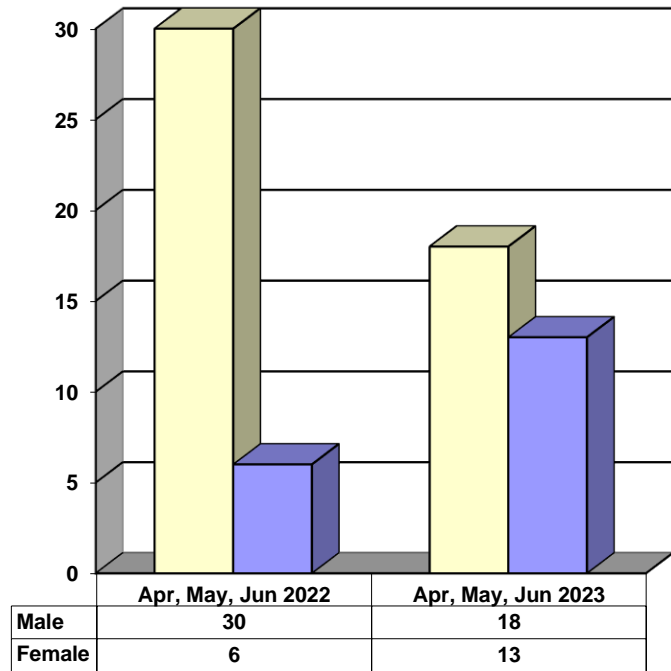


**JUVENILE SUPERVISION INFORMATION
MONTHS OF APRIL, MAY, AND JUNE 2023
(Compared to Prior Year)**

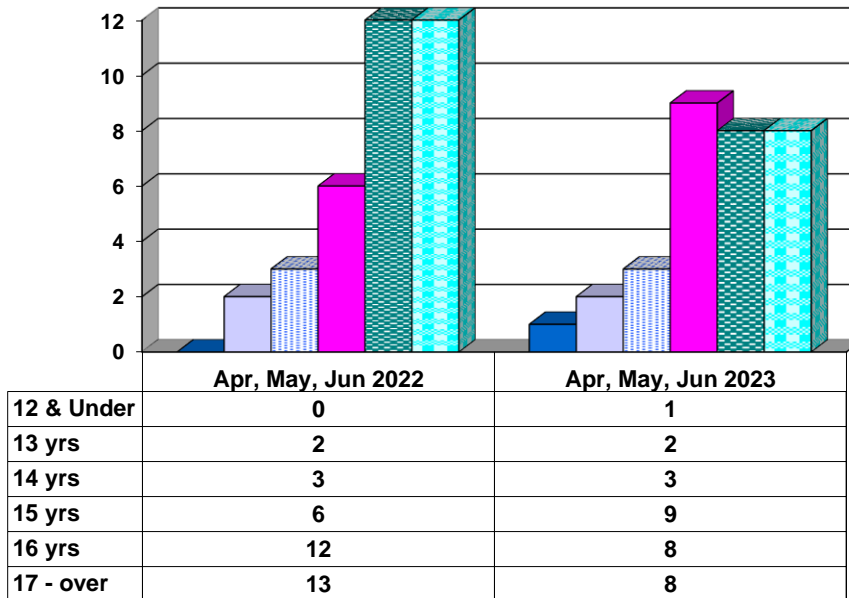
Juvenile Delinquency Petitions Filed



Gender Demographics for Juvenile Admissions

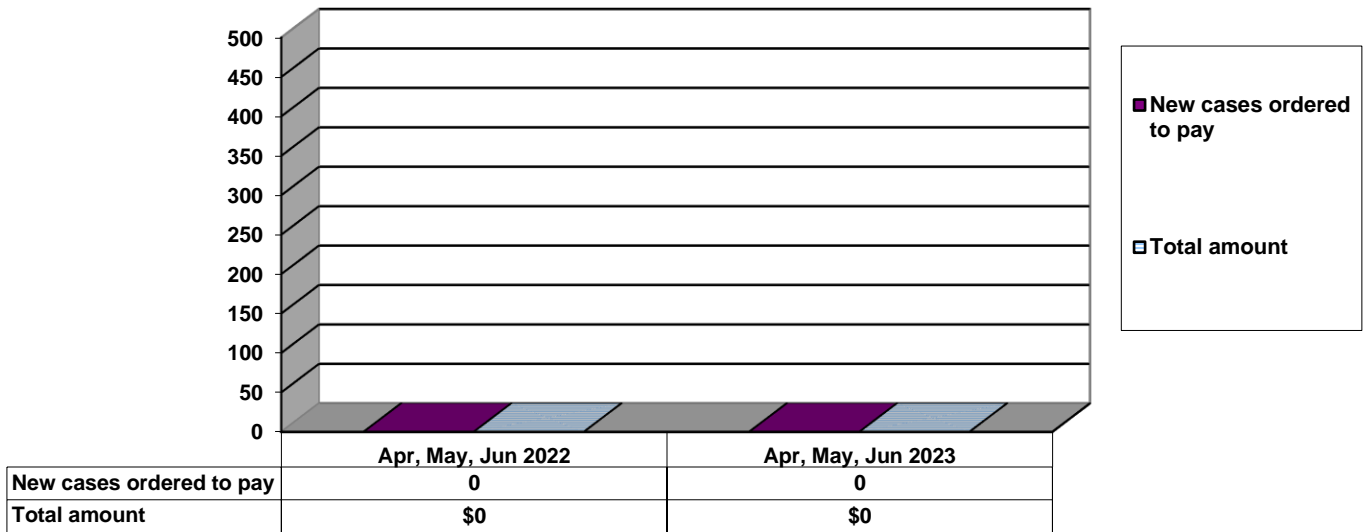


Age Demographics for Juvenile Admissions

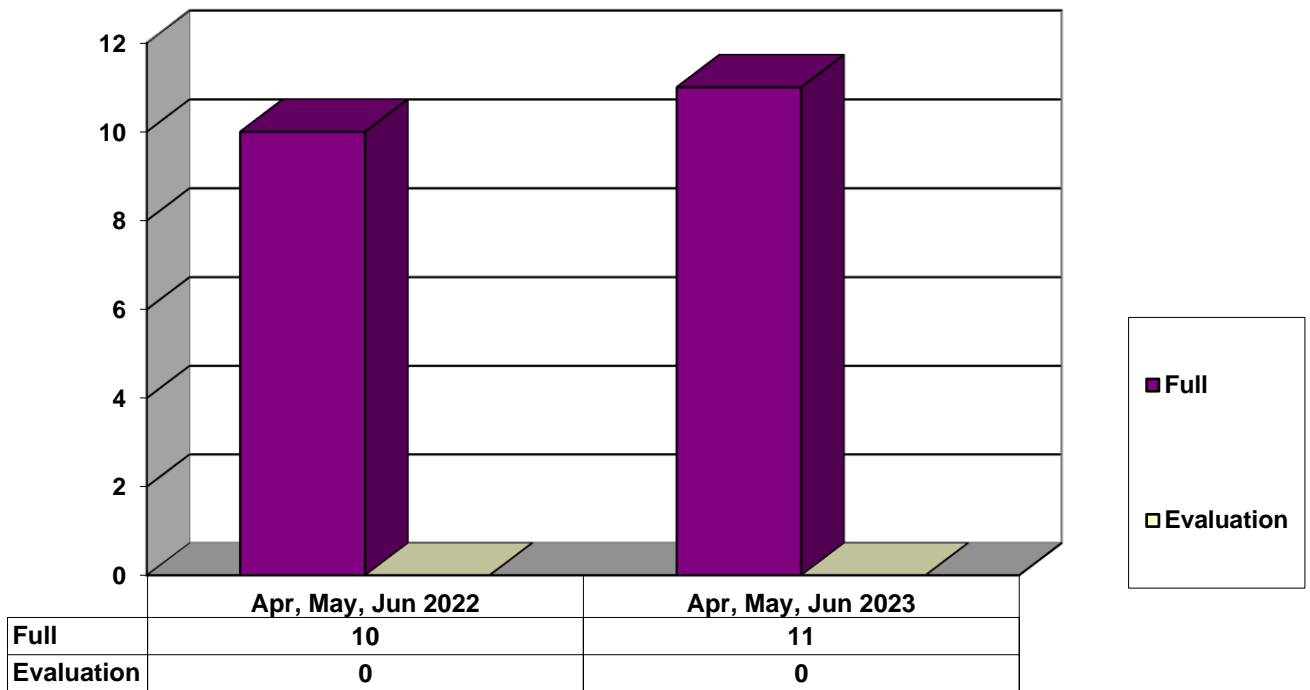


12 & Under
 13 yrs
 14 yrs
 15 yrs
 16 yrs
 17 - over

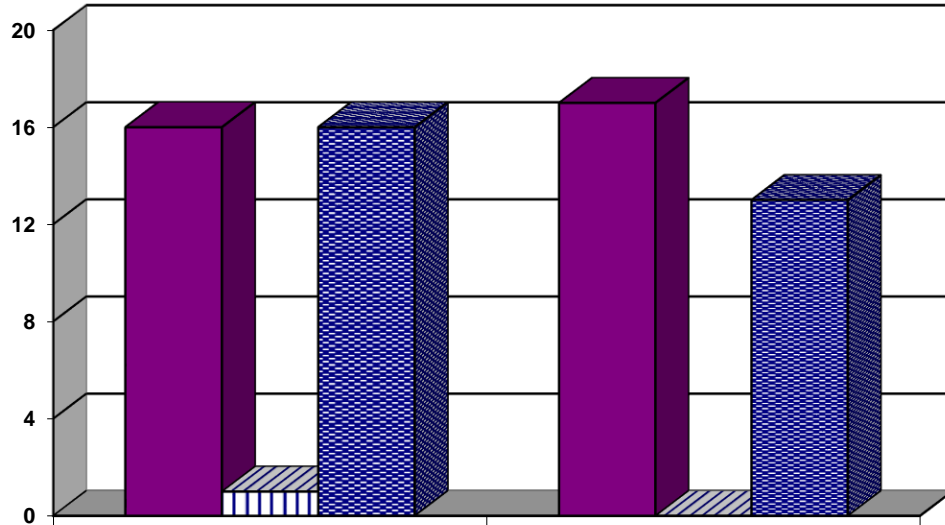
Restitution Ordered in New Juvenile Cases



Commitments to Illinois Department of Juvenile Justice



Investigations Completed by Juvenile Division



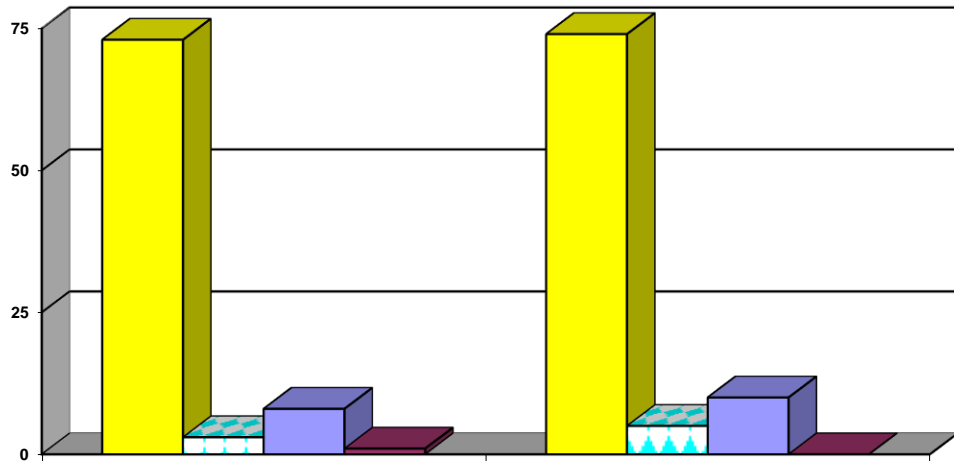
	Apr, May, Jun 2022	Apr, May, Jun 2023
Social Histories	16	17
Supplemental Social History	1	0
Remission/Review	16	13

■ Social Histories

■ Supplemental Social History

■ Remission/Review

Juvenile Caseload at End of Reporting Periods



	June 2022	June 2023
Probation	73	74
Continued under Supervision	3	5
Informal	8	10
Other	1	0

■ Probation

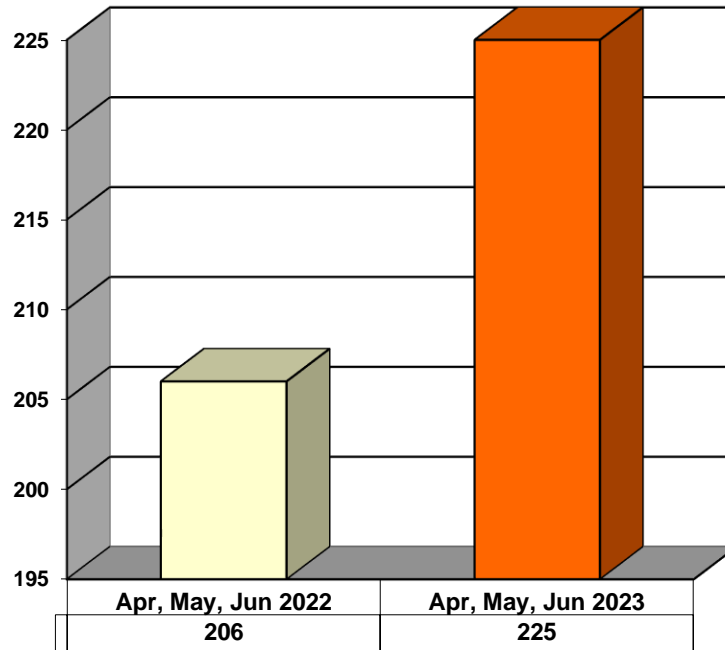
■ Continued under Supervision

■ Informal

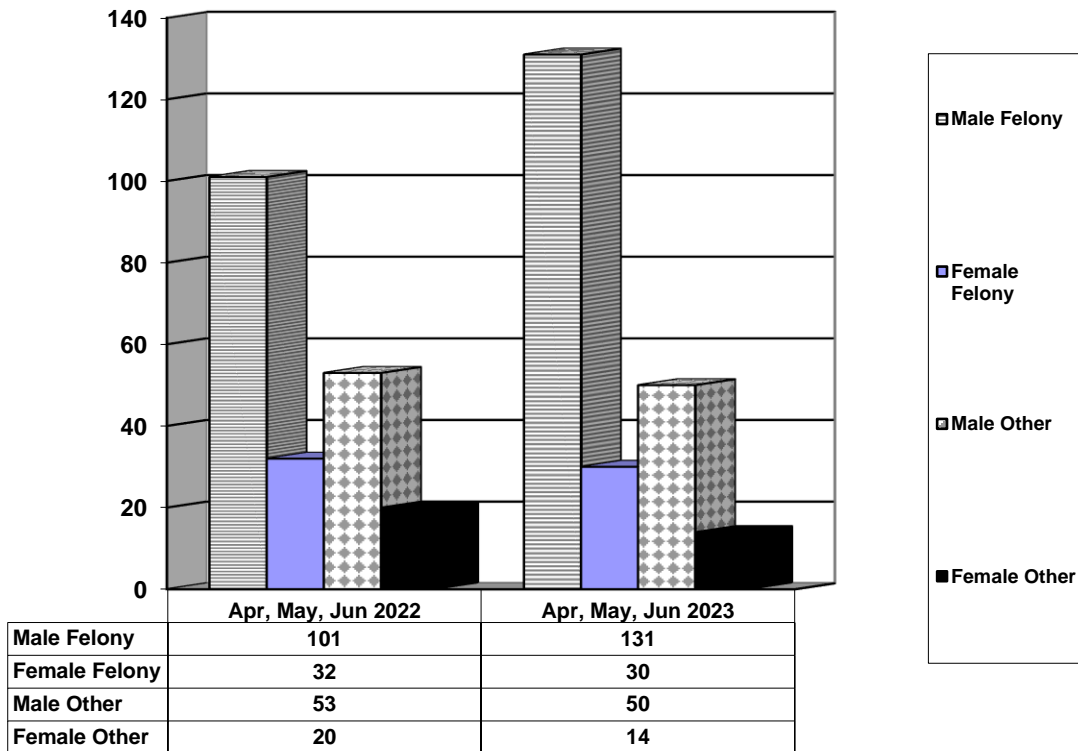
■ Other

**ADULT SUPERVISION INFORMATION
MONTHS OF APRIL, MAY, AND JUNE 2023
(Compared to Prior Year)**

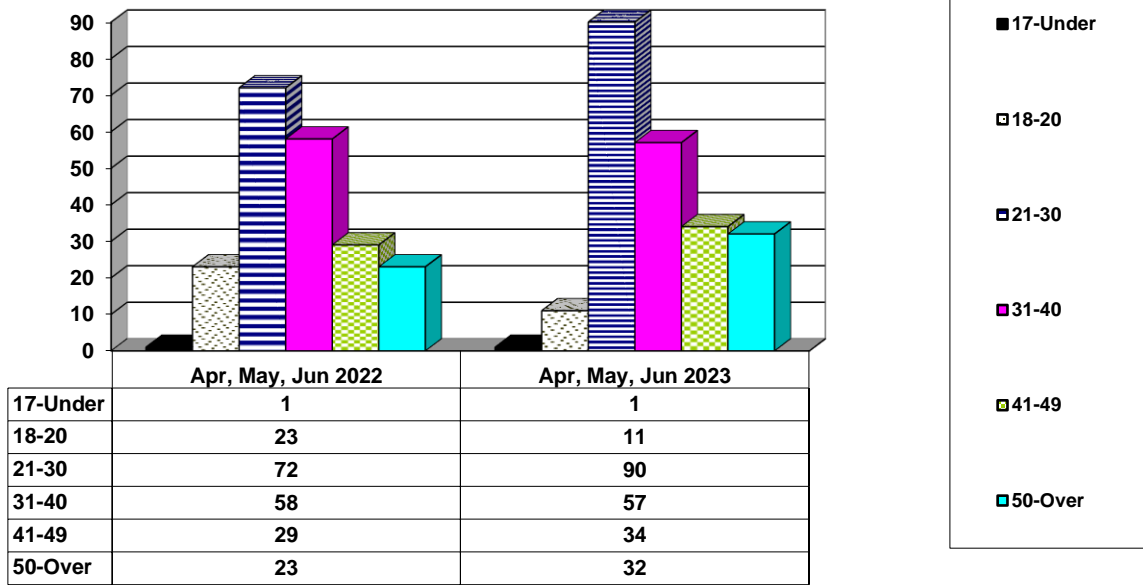
Adult Intakes Completed



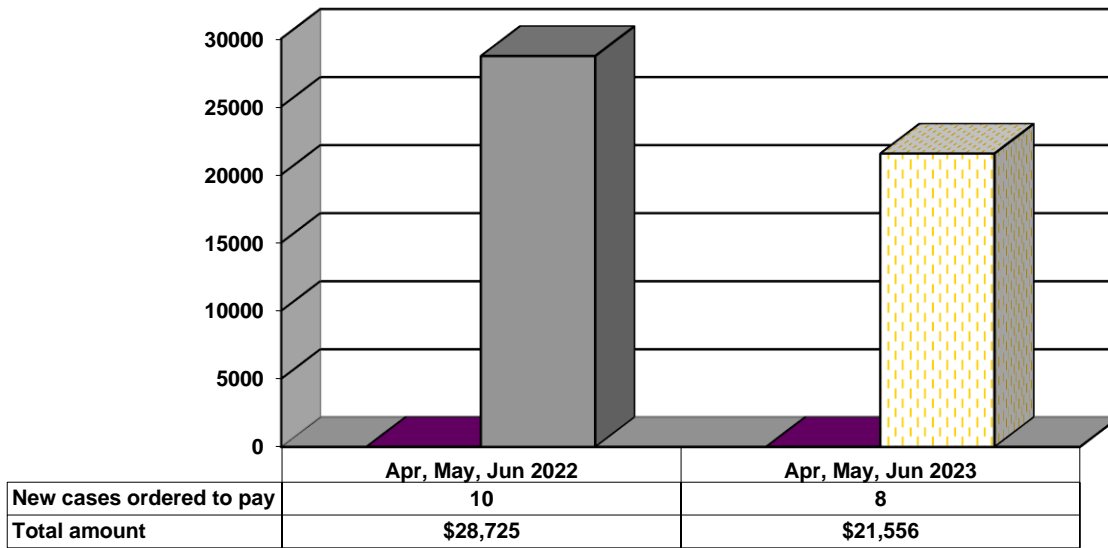
Gender Demographics for Adult Intakes



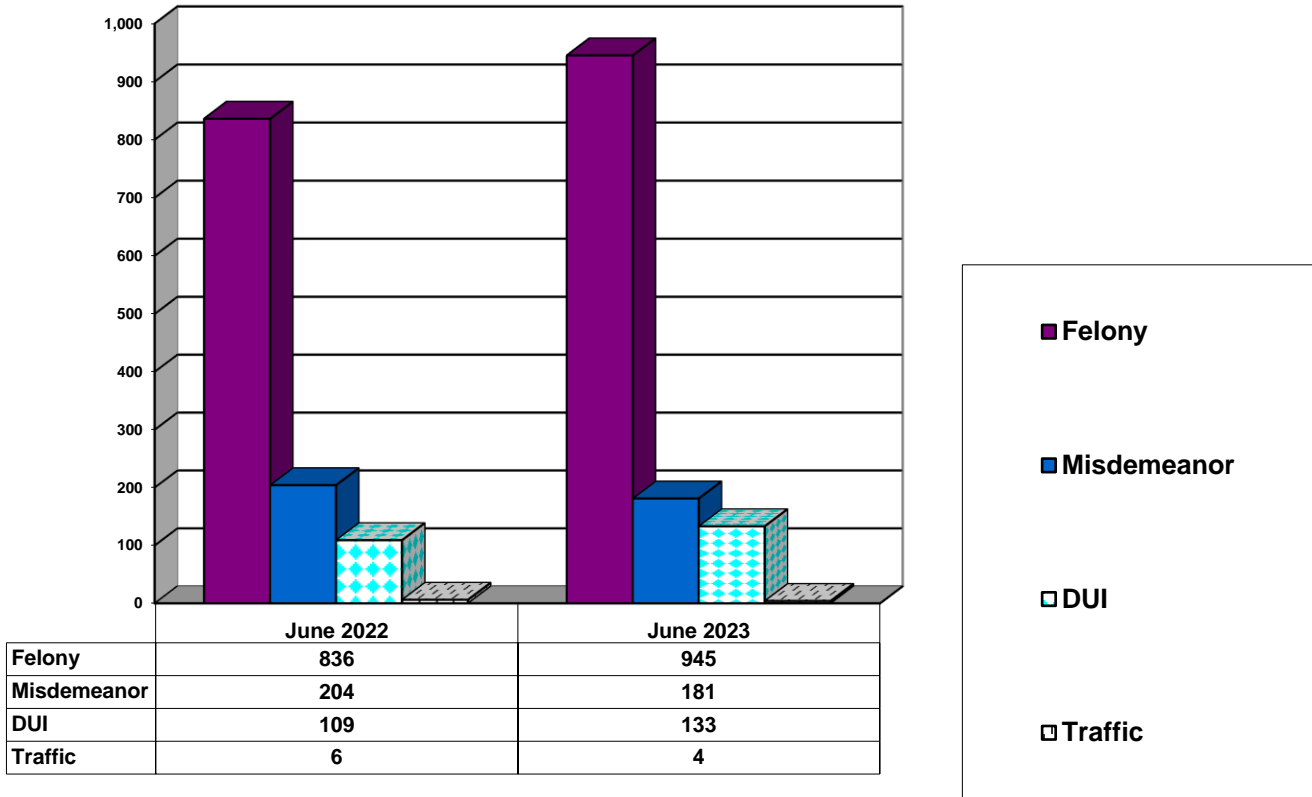
Age Demographics for Adult Intakes



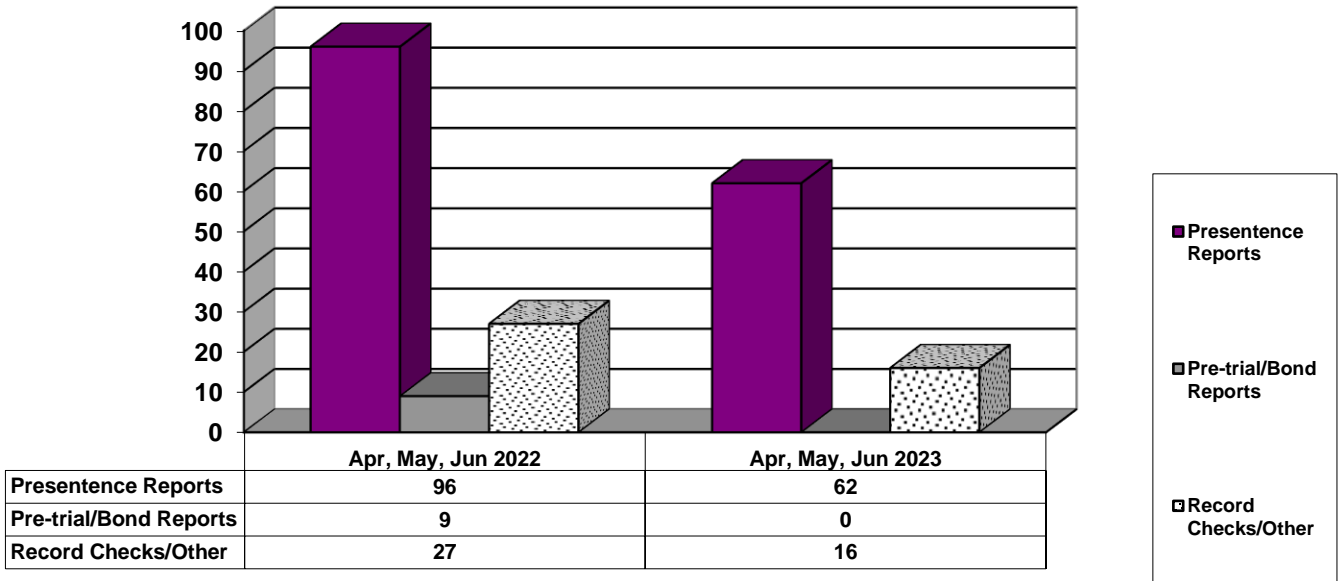
Restitution Ordered in New Adult Cases



Breakdown of Adult Caseload at End of Reporting Periods



Adult Investigations Completed



Commitments to Illinois Department of Corrections

