



## CHAMPAIGN COUNTY MENTAL HEALTH BOARD

---

### CHAMPAIGN COUNTY BOARD FOR CARE AND TREATMENT OF PERSONS WITH A DEVELOPMENTAL DISABILITY

*REMEMBER this meeting is being audio recorded. Please speak clearly into the microphone during the meeting.*

**Champaign County Mental Health Board (CCMHB)**

**WEDNESDAY, February 21, 2018**

Brookens Administrative Center, Lyle Shields Room

1776 E. Washington St. Urbana, IL

**5:30 p.m.**

---

1. Call to Order - Dr. Fowler, President
2. Roll Call
3. Citizen Input/Public Participation  
*The CCMHB reserves the authority to limit individual public participation to five minutes and limit total time to 20 minutes.*
4. Approval of Agenda\*
5. President's Comments
6. New Business
  - A. Application/Funding Requests (pages 3-4)  
*A list of applicants and amounts requested by program is included in the Board packet.*
  - B. Application Review Process  
*Board discussion of the application review process.*
  - C. SAMHSA Application Matching Funds\* (pages 5-8)  
*A Decision Memorandum requesting approval of matching funds for a federal Substance Abuse and Mental Health Services Administration (SAMHSA) Law Enforcement and Behavioral Health Partnerships for Early Diversion grant application is included in the Board packet. Action is requested.*

D. Consumer Needs Assessment Survey Update (pages 9-11)

*A Briefing Memorandum on the response to the online consumer needs assessment survey is included in the Board packet.*

7. Agency Information

*The CCMHB reserves the authority to limit individual agency participation to five minutes and limit total time to 20 minutes.*

8. Old Business

A. Schedules & Allocation Process Timeline (pages 12-15)

*Updated copies of meeting schedules and allocation timeline are included in the packet.*

9. CCDDDB Information

10. Approval of CCMHB Minutes (pages 16-22)\*

*1/17/18 and 1/24/18 minutes are included. Action is requested.*

11. Executive Director's Comments

12. Staff Reports (pages 23-31)

*Reports from Kim Bowdry, Mark Driscoll, Stephanie Howard-Gallo, and Shandra Summerville are included in the packet.*

13. Consultant Report (pages 32-33)

*A report on the 11<sup>th</sup> Annual disABILITY Resource Expo and related activities is included in the packet.*

14. Board to Board Reports

15. Financial Information (pages 34-40)\*

16. Board Announcements

17. Adjournment

*\*Board action*

CCMHB AGENCY PROGRAM FY2018 APPLICATION LIST					
Agency	Program	FY 2018 Award	FY 2018 Funder	FY 2019 Request	Notes
CCMHB/CCDDB CILA Expansion	CILA Expansion	\$50,000	MHB	\$50,000	
	CILA Expansion	\$50,000	DDB	\$50,000	
CTF Illinois	Advocacy Center	\$60,000	DDB	-	I/DD application - DDB/MHB
	Nursing	\$6,000	DDB	-	I/DD application - DDB/MHB
CU Able, NFP Inc.	CU Able Community Outreach	\$13,802	DDB	\$15,285	I/DD application - DDB/MHB
Champaign County Children's Advocacy Center	Children's Advocacy	\$37,080	MHB	\$56,249	
Champaign County Down Syndrome Network	Champaign County Down Syndrome Network	\$15,000	DDB	\$15,000	I/DD application - DDB/MHB
CCRPC - Community Services	Decision Support for DD/Person Centered Planning	\$86,460	DDB	\$119,629	I/DD application - DDB/MHB
	Justice System Diversion Program	\$62,755	MHB	\$65,074	
	Youth Assessment Center	\$76,350	MHB	\$79,000	
CCRPC - Head Start	Early Childhood Mental Health Services	-	New FY19	\$135,179	
	Social-Emotional Disabilities Services	\$55,645	MHB	\$73,605	I/DD application - DDB/MHB
Champaign Urbana Area Project	CU Neighborhood Champions	\$20,000	MHB	\$64,347	
	TRUCE	\$75,000	MHB	\$122,833	
Community Choices	Community Living	\$63,000	MHB	\$72,500	I/DD application - DDB/MHB
	Customized Employment	\$74,103	DDB	\$87,000	I/DD application - DDB/MHB
	Self-Determination Support	\$96,000	MHB	\$116,000	I/DD application - DDB/MHB
Community Svc Center of Northern Champaign Co.	Resource Connection	\$66,596	MHB	\$66,596	
Courage Connection	Courage Connection	\$66,948	MHB	\$127,000	
Crisis Nursery	Beyond Blue-Champaign County	\$70,000	MHB	\$75,000	
Cunningham Childrens Home	Independent Living Opportunities		New FY19	\$90,000	
DREAAM House	DREAAM House	58,000	MHB	\$118,250	
Developmental Services Center	Apartment Services	417,341	DDB	\$429,861	I/DD application - DDB/MHB
	Clinical Services	174,000	DDB	\$174,000	I/DD application - DDB/MHB
	Community Employment	361,370	DDB	\$361,370	I/DD application - DDB/MHB
	Connections	\$85,000	DDB	\$85,000	I/DD application - DDB/MHB
	Employment First	80,000	DDB	\$80,000	I/DD application - DDB/MHB
	Family Development Center	\$562,280	DDB	\$562,280	I/DD application - DDB/MHB
	Individual and Family Support	392,649	MHB	\$404,428	I/DD application - DDB/MHB
	Integrated/Site-Based Srvs-Community 1st	799,090	DDB	\$799,091	I/DD application - DDB/MHB
	Service Coordination	\$410,838	DDB	\$423,163	I/DD application - DDB/MHB
Don Moyer Boys and Girls Club (DMBGC)	C-U CHANGE	100,000	MHB	\$100,000	
	Champaign Community Coalition Summer Initiatives	107,000	MHB	\$107,000	
	Youth and Family Services	160,000	MHB	\$160,000	
East Central IL Refugee Mutual Assistance Center	Family Support & Strengthening	\$25,000	MHB	\$48,239	
Family Service of Champaign County	Counseling	\$25,000	MHB	\$25,000	
	Self-Help Center	\$28,428	MHB	\$28,928	
	Senior Counseling & Advocacy	\$142,337	MHB	\$142,337	

6

CCMHB AGENCY PROGRAM FY2018 APPLICATION LIST (page 2)					
Agency	Program	FY 2018 Award	FY 2018 Funder	FY 2019 Request	Notes
FirstFollowers	Peer Mentoring for Re-entry	\$59,432	MHB	\$105,900	
GROW in Illinois	Peer-Support	20,000	MHB	\$20,000	
Illinois Assn. of Microboards & Cooperatives	IAMC Building Inclusive Communities	\$52,750	DDB	-	I/DD application - DDB/MHB
Mahomet Area Youth Club	Bulldogs Learning and Succeeding Together	\$15,000	MHB	\$15,000	
	MAYC Members Matter!	\$12,000	MHB	\$18,000	
PACE, Inc.	Consumer Control in Personal Support	-	New FY19	\$22,800	I/DD application - DDB/MHB
PACE, Inc.	Opportunities for Independence	\$40,546	DDB	\$49,000	I/DD application - DDB/MHB
Promise Healthcare	Mental Health Services with Promise	\$222,000	MHB	\$222,000	
	Promise Healthcare Wellness & Justice	\$58,000	MHB	\$58,000	
Rape Advocacy, Counseling & Education Services	Counseling & Crisis Svs/Sexual Violence Prevention E	\$18,600	MHB	\$18,600	
Rattle the Stars	Youth Suicide Prevention Education	-	New FY19	\$54,500	
Rosecrance Central Illinois	Coordination of Services: DD/MI	\$34,126	DDB	\$35,150	I/DD application - DDB/MHB
	Criminal Justice PSC	\$300,265	MHB	\$338,643	
	<i>Criminal Justice SU Tx - was PCHS</i>	\$10,600	MHB	<i>combined</i>	
	<i>Crisis, Access, &amp; Benefits</i>	\$228,002	MHB	\$262,650	
	<i>Fresh Start - was PCHS</i>	\$77,000	MHB	\$79,310	
	<i>Parenting w/ Love &amp; Limits (was front end)</i>	\$282,663	MHB	\$392,992	
	<i>Parenting w/ Love &amp; Limits - was PCHS</i>	\$300,660	MHB	<i>combined</i>	
	<i>Prevention - was PCHS</i>	\$58,250	MHB	\$67,725	
	<i>Recovery Home</i>		New FY19	\$200,000	
	<i>Specialty Courts - was PCHS</i>	\$203,000	MHB	\$203,000	
	<i>Transition Housing CJ</i>	\$14,000	MHB	-	
	<i>Youth Services - was PCHS</i>	\$75,000	MHB	-	
The UP Center of Champaign County	Children, Youth, & Families Program	\$19,000	MHB	\$18,423	
United Cerebral Palsy Land of Lincoln	Vocational Services	\$34,590	DDB	\$34,590	I/DD application - DDB/MHB
	Vocational Training and Support	\$51,885	MHB	\$51,885	
Urbana Neighborhood Connections	Community Study Center	\$19,500	MHB	\$19,500	
<b>Combined CCMHB &amp; CCDDB Total</b>		<b>\$7,179,941</b>		<b>\$7,816,912</b>	total all requests
				<b>3,757,160</b>	<b>FY19 MH/SA Total Requested</b>
<b>FY18 CCMHB Total Awards</b>		<b>3,822,645</b>			
<b>FY18 CCDDB Total Awards</b>		<b>3,357,296</b>		<b>4,059,752</b>	<b>FY19 ID/DD Total Requested</b>
<i>Total CCMHB FY18 MH/SA Awards</i>		<i>3,165,351</i>			
<i>Total CCMHB FY18 I/DD Awards</i>		<i>657,294</i>			

6, C, 1

Law Enforcement and Behavioral Health Partnerships for Early Diversion  
HHS/SAMHSA/CMHS  
FOA Summary - FY2018

**Funding Opportunity Number:** SM-18-005

**Due Date:** March 5, 2018

**Eligibility:** Eligibility is statutorily limited by Section 9002, 21st Century Cures Act (P.L. 114-255) to states; political sub-divisions of states; and Indian tribes and tribal organizations as defined in Section 4 of the Indian Self-Determination and Education Assistance Act or through agreements with other public and non-profit entities.

**Funding Info:**

- Total available funding: \$2,751,000
- Estimated number of awards: Up to 8
- Estimated award amount: Up to \$330,000 per year
- Length of Project: Up to 5 years
- Match: 25% required non-federal contributions, may be cash or in-kind

**Project Start Date:** September 30, 2018

**Program Purpose**

Establish or expand programs that divert adults with a serious mental illness (SMI) or a co-occurring disorder (COD) from the criminal justice system to community-based services prior to arrest and booking. Special consideration will be given to applicants proposing to use grant funding to support early diversion services for veterans.

**Key Personnel**

Key personnel are staff members who must be part of the project regardless of whether they receive a salary or compensation from the project. These staff members must make a substantial contribution to the execution of the project.

The key personnel for this program will be the **Project Director** and the **Project Evaluator**. These positions require prior approval by SAMHSA after a review of job descriptions and staff credentials.

**Expectations of Program**

- Convene an interagency "Law Enforcement and Behavioral Health Partnership" group. Required partners must be the criminal justice system, mental health and substance use

treatment and recovery systems. (Additional key stakeholders could include consumers and their families, social welfare agencies, and the judiciary and corrections system.)

- A Letter of Commitment from criminal justice, mental health, substance use partners, and any additional key stakeholders must be included as Attachment 1 of the application, attesting that there has been relevant interagency collaboration between the three systems and key stakeholders.
- This group must design, implement, and oversee a plan of comprehensive strategies to divert individuals with SMI or COD from arrest to community-based services.
- Develop and implement a comprehensive plan of EBPs, strategies, and services using a multi-agency approach that addresses the following three stages of early diversion of an individual with SMI or COD prior to arrest or booking:
  - Encounter is law enforcement's (LE) process for identifying potential individuals for diversion and direct transfer/warm hand off to BH care providers.
    - **Police transport individuals to locations that can address the crisis and connect them to ongoing services:**
      - Crisis Walk-in/Urgent Care
      - Crisis Stabilization
      - Crisis Respite with overnight
      - Assessment Centers and Recovery Centers
    - **Police request on-site behavioral health assistance:**
      - Mobile Crisis Teams
    - **Police and behavioral health co-respond:**
      - Crisis Intervention Response Team (CIRT)
      - Crisis Response Team (CRT)
      - Psychiatric Emergency Response Team (PERT)
    - Communities may also consider using technological aids to overcome geographic distances or other barriers to in-person warm hand-offs.
  - Enable all the protocols to be followed to enable law enforcement to conduct the transfer/warm hand off; including how and when the individual will be assessed for a SMI and COD.
  - Engage in the identification and subsequent provision of community-based MH treatment and recovery support services that are based on best known practices and current research findings. This is to ensure that individuals with SMI or COD remain enrolled and engaged in care. (Examples of services include, but are not limited to, integrated MH and SU disorder treatment, psychiatric rehabilitation, medication management and access, case management services, peer support services. These services should be coordinated with social services, including life

skills training, housing placement, vocational training, education and job placement, and health care.)

- Integrate the early diversion program into an existing system of care.

**Data Collection and Performance Measurement – (No more than 20% of the total grant award)**

- Recipients are required to report performance on measures such as the following:
  - The number of individuals referred to MH or related services by LE.
  - The number of individuals screened for MH or related interventions by BH staff. (Measure used to record the initial face-to-face contact made by a BH provider in response to a referral by LE.)
  - The number of people referred to MH or related services.
  - The number of people referred to MH or related services who continue to be engaged in treatment services at 3 months, 6 months, and one year after diversion.
- Recipients must periodically review the performance data, assess progress, and use this information to improve the management of their grant project.
  - The assessment should determine whether you are achieving the intended goals, objectives, and outcomes and whether adjustments need to be made
- Recipients must submit a comprehensive performance assessment plan, and **include a flow chart and describe cross-agency protocols** for encounters, engagement, and enrollment, agreed to in writing by LE and the BH authorities of the community participating in the project. **The plan must be submitted by the 3rd month after award, prior to enrolling program participants.**
  - The comprehensive performance assessment plan must also include the following:
    - How the necessary support for continuing the project will be secured when federal funding ends.
    - How the impact of gender, race, and cultural bias on participant selection and outcomes will be measured.
    - How the program performance will be assessed and how activities will be modified as a result.
- Performance assessments should also be used to determine whether your project is having/will have the intended impact on behavioral health disparities. You will be

required to submit an annual performance/progress report on the progress achieved, barriers encountered, and efforts to overcome these barriers.

### **Allowable Activities**

- Train professionals involved in the system of care, law enforcement officers, attorneys, and judges to improve the desired outcomes of the program.
- Develop and provide community outreach and crisis intervention.
- Expand community-based mental health and co-occurring mental illness and substance use disorder services to accommodate the diversion program.

### **EBPs**

- Identify the EBPs proposed for implementation
- Discuss populations for which the practices have been shown to be effective and show that they are appropriate for the program/population of focus (examples provided: ACT, Integrated Treatment of COD)

### **Other Notes**

**No more than 15% of the total grant award for the budget period may be utilized for infrastructure development** (partnership development, enhancing computer system, policy enhancement/improvement)

**Special consideration** given to applicants proposing to use grant funds to **provide early diversion services to veterans**: utilize and provide technical assistance for service members, veterans and their families, including efforts to engage staff in cultural competency training courses and to collaborate with key organizations in their local communities focused on serving this population

### **Other Requirements for Recipients**

- Develop a BH disparities impact statement within 60 days of receiving award
- (Strongly encouraged to) adopt a tobacco free facility/grounds policy and to promote abstinence from all tobacco products.
- Facilitate the health insurance application and enrollment process for eligible, uninsured clients.
- **Travel:** MUST send a maximum of three people (including the Project Director, the Project Evaluator, and a person with lived experience) to at least one joint grantee meeting in every other year of the grant (likely years 1, 3, and 5). Each meeting will be up to three days, and held in Washington D.C.





(L.D.)

BRIEFING MEMORANDUM

DATE: February 21, 2018  
TO: Members, Champaign County Mental Health Board (CCMHB) and  
Champaign County Developmental Disabilities Board (CCDDB)  
FROM: Lynn Canfield, Mark Driscoll  
SUBJECT: Online Needs Assessment Surveys

**Background:** Last fall, our team developed surveys for use in the 2018 community needs assessment. These were available online from October 24<sup>th</sup> through January 31, 2018. Respondents were invited to self-select from among eight surveys the one most appropriate to their circumstance. One set was specific to mental health and substance use services and the other focused on developmental disability services. The surveys within each set solicit responses on a person's experience with the system, access to services, and gaps in services. All are anonymous.

**Promotion:** Posters and postcards announcing the survey were also distributed, including at the information desk at Brookens, through the Alliance and facebook pages, and at events such as the Celebrate disABILITY Festival in October. Paper copies of each survey instrument were available upon request. Information was provided to groups and individuals with an interest in the behavioral health and developmental disabilities service systems, with a request to distribute the information within their networks:

- CCMHB and CCDDB funded providers
- Champaign Community Coalition
- Champaign County Continuum of Care
- Champaign County Health Care Consumers
- Champaign County Reentry Council
- Child and Adolescent Local Area Network
- Child and Family Connections – Champaign County Local Interagency Council
- Choices Coordinated Care Solutions
- Circle of Friends Adult Day Care Center
- Community Resource Center at Presence Covenant Medical Center
- Council of Service Providers to the Homeless
- Crisis Intervention Team Steering Committee
- Crisis Response Planning Committee
- CU at Home
- C-U Cradle2Career
- C-U Mental Health Public Education Committee
- disABILITY Resource Expo Coordinators and Steering Committee
- Family Service Self Help Center
- GROW in Illinois

9

- Human Services Council
- Ligas Court Monitor, Ronnie Cohn
- Local Funders Group
- Metropolitan Intergovernmental Council
- NAMI-Champaign County Chapter
- NAMI-University of Illinois Chapter
- Parkland College – Counseling Services Office
- Senior Task Force
- Specialty Court Steering Committee, Drug Court Team, and Alumni Association
- The Autism Project at UIUC
- The Illinois Alliance (Youth and Family Peer Support Alliance)
- University YMCA – the New American Welcome Center
- Urbana School District
- Veterans Administration – Justice and Homeless Outreach Workers

**Participation:** The surveys featured similar questions but targeted eight different audiences. While a few questions were open-ended, most included numerous choices so that the data can be aggregated and analyzed. Due to the surveys' length and complexity, respondents could treat all answers as optional; incomplete surveys will be included in analysis.

- A person who has a mental health and/or substance use disorder (25 questions)  
*22 completed + 25 incomplete = 47 (5 are paper)*
- Family member, caregiver, loved one, or guardian of a person with a mental health and/or substance use disorder (25 questions)  
*26 completed + 34 incomplete = 60 (9 are paper)*
- Provider of services or supports to people who have mental health and/or substance use disorders (18 questions)  
*38 completed + 39 incomplete surveys = 77 (3 are paper)*
- [Stakeholder] with an interest in services and supports for persons with a mental health and/or substance use disorder (10 questions)  
*14 completed + 35 incomplete surveys = 49*
- A person with an intellectual or developmental disability (29 questions)  
*6 completed + 0 incomplete = 6 (2 are paper)*
- Family member, caregiver, loved one, or guardian of a person with an intellectual or developmental disability (31 questions)  
*35 completed + 32 incomplete = 67 (5 are paper)*
- Provider of services for persons with an intellectual or developmental disability (14 questions)  
*17 completed + 18 incomplete = 35 (1 is paper)*
- [Stakeholder] with an interest in services and supports for persons with an intellectual or developmental disability (7 questions)  
*6 completed + 14 incomplete = 20 (0 are paper)*

**Next Steps:** This project is meant to support the community needs assessment process which informs strategic planning for each board, every three years. A draft plan will

be presented to each board in the fall. Because we have not used this survey approach before, some activities will be based on what we learn from these data.

For most respondent groups, there are enough responses to conduct an analysis and report on findings, which will be completed next month. We had hoped that, by making the survey tools anonymous, available for three months, promoted broadly, and with all responses optional, we would learn from people outside of our immediate spheres, including those who are not aware of funders, those who have limited time due to providing family care, and those who experience stigma. While this appears to be the case for most groups, we suspected that the responses from people who have ID/DD would still be very low. An alternative method of seeking their input will be explored.



J.A.

## **CCMHB 2017-2018 Meeting Schedule**

**First Wednesday after the third Monday of each month--5:30 p.m.  
Brookens Administrative Center  
Lyle Shields Room  
1776 E. Washington St., Urbana, IL (unless noted otherwise)**

***September 20, 2017***

***September 27, 2017 – study session***

***October 18, 2017***

***October 25, 2017 – study session***

***November 15, 2017***

***November 29, 2017 – study session***

***~~December 13, 2017 (tentative) cancelled~~***

***January 17, 2018***

***January 24, 2018 – study session***

***February 21, 2018***

***February 28, 2018 – study session***

***March 21, 2018***

***March 28, 2018 – study session***

***April 18, 2018 – in John Dimit Conference Room***

***April 25, 2018 – study session***

***May 16, 2018 – study session***

***May 23, 2018***

***June 27, 2018***

***\*This schedule is subject to change due to unforeseen circumstances. Please call the CCMHB-CCDDB office to confirm all meetings.***

# CCDDB 2017-2018 Meeting Schedule

## Board Meetings

8:00AM except where noted

Brookens Administrative Building, Lyle Shields Room  
1776 East Washington Street, Urbana, IL

September 20, 2017

October 25, 2017

~~November 15, 2017~~ cancelled

**November 29, 2017 – Study Session, 5:30PM**

December 13, 2017

January 24, 2018

February 21, 2018

March 21, 2018

April 25, 2018

May 23, 2018

June 27, 2018

*This schedule is subject to change due to unforeseen circumstances.  
Please call the CCMHB/CCDDB office to confirm all meetings.*

**DRAFT**

**July 2017 to June 2018 Meeting Schedule with Subject and Allocation Timeline**

The schedule provides dates and subject matter of meetings of the Champaign County Mental Health Board through June 2018. The subjects are not exclusive to any given meeting, as other matters requiring Board review or action may also be addressed or may replace the subject listed. Study sessions may be scheduled with potential dates listed; topics will be based on issues raised at meetings, brought by staff, or in conjunction with the Champaign County Developmental Disabilities Board. Included with meeting dates are tentative dates for steps in the funding allocation process for Program Year 2019 (July 1, 2018 – June 30, 2019) and deadlines related to current (PY2018) agency contracts.

7/19/17	<b>Regular Board Meeting</b> Approve Draft Budget; Approve 2016 Annual Report
8/25/17	<i>Agency PY2017 Fourth Quarter and Year End Reports Due</i>
9/20/17	<b>Regular Board Meeting</b> Draft Three Year Plan 2016-2018 with FY18 Objectives U of I Program Evaluation Presentation
9/27/17	<b>Study Session</b>
10/18/17	<b>Regular Board Meeting</b> Draft Program Year 2019 (PY19) Allocation Criteria Community Coalition Summer Initiatives Report
10/25/17	<b>Study Session</b>
10/27/17	<i>Agency PY2018 First Quarter Reports Due</i>
10/31/17	<i>Agency Independent Audits Due</i>
11/15/17	<b>Regular Board Meeting</b> Approve Three Year Plan with One Year Objectives Allocation Decision Support – PY19 Allocation Criteria
11/29/17	Study Session
12/13/17	<i>Public Notice to be published on or before this date, giving at least 21-day notice of application period.</i>
12/13/17	<del><b>Regular Board Meeting</b></del> (tentative) CANCELLED
01/05/18	<i>CCMHB/CCDDB Online System opens for Agency Registration and Applications for PY19 Funding.</i>
1/17/18	<b>Regular Board Meeting</b>

	Election of Officers
1/24/18	<b>Study Session</b>
1/26/18	<i>Agency PY2018 Second Quarter Reports Due</i>
2/2/18	<i>Agency deadline for submission of applications for PY2019 funding. Online system will not accept forms after 4:30PM.</i>
2/9/18	<i>List of Requests for PY2019 Funding assembled</i>
2/21/18	<b>Regular Board Meeting</b> Assignment of Board Members to Review Proposals
2/28/18	<b>Study Session</b>
3/21/18	<b>Regular Board Meeting</b> 2017 Annual Report
3/28/18	<b>Study Session</b>
4/11/18	<i>Program summaries released to Board, copies posted online with CCMHB April 18, 2018 meeting agenda</i>
4/18/18	<b>Regular Board Meeting</b> Program Summaries Review and Discussion
4/25/18	<b>Study Session</b> Program Summaries Review and Discussion
4/27/18	<i>Agency PY2018 Third Quarter Reports Due</i>
5/9/18	<i>Allocation recommendations released to Board, copies posted online with CCMHB May 16, 2018 meeting agenda</i>
5/16/18	<b>Study Session</b> Allocation Recommendations
5/23/18	<b>Regular Board Meeting</b> Allocation Decisions Authorize Contracts for PY2019
5/24/18-6/1/18	<i>Contract Negotiations</i>
6/27/18	<b>Regular Board Meeting</b> Approve FY2019 Draft Budget
6/28/18	<i>PY2019 Contracts completed/First Payment Authorized</i>

10

---

**CHAMPAIGN COUNTY MENTAL HEALTH BOARD  
BOARD MEETING**

*Minutes—January 17, 2018*

*Brookens Administrative Center  
Lyle Shields Room  
1776 E. Washington St  
Urbana, IL*

*5:30 p.m.*

---

**MEMBERS PRESENT:** Susan Fowler, Judi O'Connor, Joe Omo-Osagie, Elaine Palencia, Kyle Patterson, Julian Rappaport, Margaret White

**MEMBERS EXCUSED:** Thom Moore, Anne Robin

**STAFF PRESENT:** Lynn Canfield, Mark Driscoll, Stephanie Howard-Gallo, Shandra Summerville

**OTHERS PRESENT:** Juli Kartel, Misty Bell, Gail Raney, Rosecrance; Vicki Tolf, Danielle Matthews, Developmental Services Center (DSC); Angie Adams Martin, Cunningham Children's Home; Lisa Benson, Regional Planning Commission (RPC); Elizabeth Anderson, Courage Connection; Kari May, Children's Advocacy Center (CAC)

---

**CALL TO ORDER:**

Dr. Fowler called the meeting to order at 5:30 p.m.

**ROLL CALL:**

Roll call was taken and a quorum was present.

**CITIZEN INPUT / PUBLIC PARTICIPATION:**

None.

16



**APPROVAL OF AGENDA:**

The agenda was amended to move action items to the beginning of the agenda. The amended agenda was approved.

**PRESIDENT’S COMMENTS:**

None.

**NEW BUSINESS:**

**Election of Officers:**

**MOTION:** Ms. White moved to nominate Dr. Fowler to continue for another term as CCMHB President. Dr. Rappaport seconded the motion. A voice vote was taken and the motion passed unanimously.

**MOTION:** Ms. White moved to nominate Ms. Palencia to continue for another term as CCMHB Vice-President. Ms. O’Connor seconded the motion. A voice vote was taken and the motion passed unanimously.

**Liaison Assignments:**

The traditional liaison process was discussed. Board members agreed they would like to attend the board meetings of several different agencies throughout the year, rather than be assigned to one specific agency.

**CCMHB/CCDDB Personnel Policy:**

A Decision Memorandum and a draft CCMHB/CCDDB Personnel Policy were included in the Board packet for review. Proposed changes and revisions were identified by highlights and strikethroughs. Dr. Rappaport requested an addition to the proposed changes, to strikethrough reference to the defunct Executive Committee in the Intergovernmental Agreement (on Page 66, #9 of the packet) and replace “Executive Committee” with “CCMHB and CCDDB Board Presidents”.

**MOTION:** Dr. Rappaport moved to approve the CCMHB/CCDDB Personnel Policy with all revisions described in the memorandum and at the meeting. Mr. Omo-Osagie seconded the motion. A voice vote was taken. The motion passed unanimously.

**OLD BUSINESS:**

**Parenting with Love and Limits (PLL):**

A Decision Memorandum on consolidating the two Parenting with Love and Limits (PLL) contracts into one contract was included in the packet. Attached for reference was the PLL

Deliverable Service Components table. Also attached were the inclusionary and exclusionary criteria for youth participation in the program. A proposed budget was included in the packet as well.

Past performance notwithstanding, both programs have struggled in recent years to meet clinical minimums with such issues particularly evident with the PLL-FE program over the last year. For more detail on past performance outcomes in relation to Savannah Family Institute standards please see the Briefing Memorandum included in the November 15, 2017 Board packet.

The proposed consolidation presented here for the Board's consideration is to combine the two programs with all staff trained to provide extended care services. This provides staff with the flexibility to run either a front-end group or extended care group. Having all staff trained to deliver extended care enables the program to offer both levels of intervention depending on the identified needs of the referred families.

The staff recommendation is to implement the following process to reconfigure the Parenting with Love and Limits Extended Care Program:

1. Terminate the current Rosecrance PLL-FE program contract with an effective date of February 3, 2018. Excess revenue associated with the PLL-FE vacant positions is to be returned plus indirect costs as part of the closeout of the contract. Due to the presence of excess revenue, no payment for February 2018 will be issued.
2. Amend the Prairie Center/Rosecrance PLL-EC contract
  - a. Adjust Contract Maximum per proposed budget pro-rated for the balance of the contract term (February 4, 2018 – June 30, 2018).
  - b. Staffing is four PLL-EC trained therapists and one case manager. All staff positions are full-time fully dedicated to the program.
  - c. Revise Program Plan forms to reflect change in scope of services to include potential front end services, performance targets, and new staffing pattern including back-up plan.
  - d. Revise Financial Plan forms to reflect change in revenue, expenses and personnel.
  - e. Provider to arrange with SFI for training of Front End staff transitioning to Extended Care.
3. Amend the Savannah Family Institute Center of Excellence License Agreement contract
  - a. Adjust contract maximum per proposed budget pro-rated for the balance of the contract term (February 1, 2018 – June 30, 2018).
  - b. Adjust scope of services as necessary to reflect Front End work delivered by Extended Care Therapists.

Three separate motions were presented for the Board's consideration and action to complete the consolidation of the Parenting with Love and Limits contracts.

**MOTION: Dr. Rappaport moved to approve the termination of the Rosecrance Parenting with Love and Limits Front End contract (#MHB18-034) effective February 3, 2018. Ms. Palencia seconded the**

**motion. A roll call vote was taken and all members voted aye. The motion passed.**

**MOTION: Mr. Omo-Osagie moved to approve the contract maximum for the Rosecrance Parenting with Love and Limits Extended Care contract (#MHB18-029) be increased by \$37,065 from \$300,660 to \$337,725. Ms. O'Connor seconded the motion. A roll call vote was taken and all members voted aye. The motion passed.**

**MOTION: Ms. White moved to approve the contract maximum for the Savannah Family Institute Center of Excellence Agreement contract (#MHB 18-048 Consulting) be decreased by \$6,000 from \$143,900 to \$137,900. Ms. Palencia seconded the motion. A roll call vote was taken and all members voted aye. The motion passed.**

**Schedules and Allocation Process Timeline:**

An updated copy of the meeting schedule and allocation timeline was included in the Board packet for information only.

**AGENCY INFORMATION:**

None.

**CCDDB INFO:**

Ms. Canfield stated the CCMHB would meet on 1/24/18 and have similar agenda items as the CCDDB does in today's meeting.

**APPROVAL OF MINUTES:**

Minutes from the November 15, 2017 meeting and the November 29, 2017 study session were included in the Board packet for approval.

**MOTION: Ms. O'Connor made a motion to approve the minutes from the November 15, 2017 meeting and the November 29, 2017 study session. Ms. Palencia seconded the motion. A voice vote was taken and the motion passed.**

**EXECUTIVE DIRECTOR'S COMMENTS:**

Lynn Canfield did not make any comments.

**STAFF REPORTS:**

Reports from Mr. Mark Driscoll, Ms. Kim Bowdry, Ms. Stephanie Howard-Gallo, Mr. Chris Wilson, and Ms. Shandra Summerville were included in the Board packet for review.

**CONSULTANT'S REPORT:**

A report from Ms. Barb Bressner was included in the Board packet for review.

**BOARD TO BOARD:**

None.

**FINANCIAL INFORMATION:**

The claims report was approved.

**BOARD ANNOUNCEMENTS:**

Dr. Fowler expressed her gratitude to Sheila Ferguson from Rosecrance for her service to the community and her partnership with the CCMHB. Ms. Ferguson has resigned from her position at Rosecrance effective February 2, 2018.

**ADJOURNMENT:**

The meeting adjourned at 6:40 p.m.

Respectfully

Submitted by: Stephanie Howard-Gallo  
CCMHB/CCDDB Staff

\*Minutes are in draft form and are subject to CCMHB approval.

---

**CHAMPAIGN COUNTY MENTAL HEALTH BOARD  
STUDY SESSION**

*Minutes—January 24, 2018*

*Brookens Administrative Center  
Lyle Shields Room  
1776 E. Washington St  
Urbana, IL*

*5:30 p.m.*

---

**MEMBERS PRESENT:** Susan Fowler, Judi O'Connor, Joe Omo-Osagie, Elaine Palencia, Kyle Patterson, Anne Robin, Julian Rappaport, Margaret White

**MEMBERS EXCUSED:** Thom Moore

**STAFF PRESENT:** Lynn Canfield, Mark Driscoll, Stephanie Howard-Gallo, Shandra Summerville

**OTHERS PRESENT:** Juli Kartel, Gail Raney, Donte Lotts, Carol Bradford, Rosecrance; Jason Greenly, Courage Connection; Ron Briebrisco, Developmental Services Center (DSC); Rebecca Woodard, Laurie Taylor, Lisa Benson, Regional Planning Commission (RPC); Jenny Niebrugge, UCP Land of Lincoln; Patsi Petri, Champaign County Board

---

**CALL TO ORDER:**

Dr. Fowler called the meeting to order at 5:30 p.m.

**ROLL CALL:**

Roll call was taken and a quorum was present.

**CITIZEN INPUT / PUBLIC PARTICIPATION:**

Lisa Benson from Regional Planning Commission (RPC) announced a Restorative Justice training on February 8<sup>th</sup> from 1-3 p.m.

21

**APPROVAL OF AGENDA:**

The agenda was approved.

**FUNDING PRIORITIES FOR PY19:**

A Briefing Memorandum with recommended priorities for funding for the period on July 1, 2018 to June 30, 2019 was included in the Board packet. Ms. Canfield provided additional information and a detailed review of the document. Board members discussed current priorities.

**STUDY SESSION:**

Rebecca Woodard and Laurie Taylor from the Regional Planning Commission (RPC) gave a Powerpoint mid-year presentation/report on “Justice Diversion Services”.

Carol Bradford and Donte Lotts from Rosecrance gave a Powerpoint mid-year presentation/report on the “Fresh Start” program.

Jennifer Niebrugge from United Cerebral Palsy Land of Lincoln gave a mid-year report/presentation on the “Vocational Services” program. A copy of the report was included in the Board packet.

Board members were given and opportunity to ask questions following the presentations.

**BOARD ANNOUNCEMENTS:**

Kyle Patterson distributed information regarding homelessness and requested a Board conversation about the issues in our community.

**ADJOURNMENT:**

The meeting adjourned at 7:10 p.m.

Respectfully

Submitted by: Stephanie Howard-Gallo  
CCMHB/CCDDB Staff

*\*Minutes are in draft form and are subject to CCMHB approval.*

**Kim Bowdry, Associate Director for Intellectual & Developmental Disabilities  
Staff Report – February 21, 2018**

**CCDDB Reporting:** FY18 Second Quarter reports were due on January 26, 2018. A few agencies had questions on completing the reports. I am currently reviewing the reports and tracking program progress. Please see the Briefing Memo in this packet for further information regarding client service level data.

**Site Visits:** I was joined by Stephanie Howard-Gallo, Operations & Contracts Coordinator and Chris Wilson, Financial Manager on a site visit with CU Able. Reported activity for FY18 1<sup>st</sup> and 2<sup>nd</sup> Quarter was reviewed. My report on this site visit is currently in progress.

**FY19:** A copy of the FY2019 Applications for funding can be found in the CCDDB packet. PACE submitted a new application and CCRPC added a new component to their application.

PACE submitted a new application for Consumer Control in Personal Support, which proposes recruitment and orientation of Personal Support Workers (PSWs). This program will target persons whom want to work as PSWs with persons with I/DD and their families, when they choose to utilize Self-Directed Assistance (SDA).

CCRPC Community Services added a new component to their application. The Decision Support for DD/Person Centered Planning now proposes to provide conflict free person centered planning and case management services to adults in the emergency category on PUNS followed by those in the critical category with priority given to those on PUNS for the longest period of time. CCRPC staff will utilize the same Discovery and Personal Plan tools developed by DHS and required by all ISC agencies in Illinois for people who receive Medicaid waiver funding. All persons served through the Decision Support Person Centered Planning Program must not be receiving any Medicaid waiver funding.

The following agencies did not submit FY19 applications: CTF Illinois and IAMC.

**Community Needs Survey:** A Briefing Memo on the Community Needs Survey can be found in the Board packet. Because of the low input from people with ID/DD, it is likely that Board staff will work with people with ID/DD to get their input.

**DisABILITY Resource Expo:** Expo Steering Committee Meeting on February 6<sup>th</sup>. The Children’s Room Committee is exploring the option of using books by some of the AIR artists as prizes this year. The Expo will be held on April 7<sup>th</sup> from 9:00-2:00 at the Vineyard Church.

**Community Learning Lab School of Social Work Students:** I met with the spring 2018 CLL students at the end of January. The students will be focusing on developing an employment

training program. The CLL students have completed research on Project SEARCH, Stuck in Transition? Exploring the spaces of employment training for youth with intellectual disability (located in Canada, 2008), and Social Problem-Solving Skills Training for Adults with Mild Intellectual Disability: A Multiple Case Study. They are now ready to begin organizing and designing their own plans for an employment training program, or an effective aspect of a program.

**NACBHDD:** I participated in the NACBHDD I/DD committee call and a follow-up call working on a Congressional policy briefing titled, *WHEN A GOOD LIFE IS DEPENDENT ON FEDERAL POLICY FOR INDIVIDUALS WITH INTELLECTUAL AND DEVELOPMENTAL DISABILITIES(I/DD)*. This briefing is currently sponsored by Senator Wyden and Representative Napolitano and I reached out to Senator Duckworth, but have yet to hear back from her office. Attendees at the briefing will hear from a parent and experts in the ID/DD field about the importance of personal independence and the key role of Medicaid funding for services, the need for a strong workforce supporting people, and the essential role employment plays for people with disabilities.

**Other activities:** I participated in a Doors to Wellbeing Self-Care for Mental Health Peer Specialist webinar. The Webinar reflected on stress signs and symptoms. Positive thinking, daily affirmations, and self-care planning were ways of combatting stress.

I participated in a webinar, A CEO's Guide to Trauma. This webinar covered:

- How trauma affects us, neurologically (consumer and staff).
- Why responsiveness to trauma must be applied universally and how to do it.
- Why any effective approach to responsiveness to trauma must focus on staff and their interactions.
- The three elements of trauma responsiveness: safe, connected, and in control.
- Why efforts to respond to trauma must involve the whole organization in order to be sustainable.

I participated in the Disability Statistics Compendium webcast. Rehabilitation Research and Training Center on Disability Statistics and Demographics (StatsRRTC) states that its mission is to narrow and actively bridge the divide between the producers and end users of disability statistics, thereby supporting better data collection, more accurate information, better decision-making, more effective programs, and better lives for people with disabilities.

I attended the University Of Illinois School Of Social Work Grant-A-Thon and observed the Q & A Panel with Grantors, including Mark Driscoll, Associate Director for Mental Health & Substance Abuse Services.

**PUNS Selection & Reports:** DHS-DDD selected sixteen Champaign County people from the PUNS database in April. Seven of those people have completed the PAS process and are currently receiving services. The remaining people continue to work with the ISC to complete the PAS process.



**Mark Driscoll**

**Associate Director for Mental Health & Substance Abuse Services**

**Staff Report – February 21, 2018 Board Meeting**

**Summary of Activity**

FY19 Application Process: The deadline to submit an application for the FY2019 allocation cycle was close of business February 2, 2018. Technical assistance on completing forms and navigating the system was available on request. In the Board packet is a list of applications submitted to either the CCMHB or the CCDDDB.

Contract Related Activity: Amendments to the PLL contract authorized at the January Board meeting have been issued. The Rosecrance PLL-Front End contract amendment terminates the program and requires return of excess revenue within forty-five days. The excess revenue is tied to vacant positions plus associated indirect costs. The Rosecrance, formerly Prairie Center, PLL-Extended Care contract amendment adjusts the contract maximum, consolidates the Front End and Extended Care staff under one contract, and requires booster training for Front End staff. The Savannah Family Institute Center of Excellence Agreement contract amendment adjusts financial obligations associated with the reduced staffing pattern.

The booster training referenced above has been scheduled for February 19 and 20 at the Rosecrance Killarney Street office. Savannah Family Institute and Rosecrance PLL staff are coordinating plans for a PLL group session that would be open to stakeholders.

Per contract special provisions, six programs are required to provide mid-year reports on the start-up and/or implementation of the programs. The first of three presentations were made at the study session on January 25<sup>th</sup>. Scheduled for the February 28<sup>th</sup> study session are Champaign County Regional Planning Commission's Youth Assessment Center, Grow in Illinois' Peer Support program, and the DREAM House's program of the same name.

As an aside, I mentioned at the January meeting that Sheila Ferguson had resigned as the Executive Director of Rosecrance C/U (now referred to as Rosecrance Central Illinois since the merger with Prairie Center). Rosecrance, Inc. has since announced Chris Gleason, the Executive Director of the Rosecrance McHenry County office, will replace Sheila effective February 5<sup>th</sup>.

CCMHB Second Quarter Reports: Program reports for second quarter FY18 contracts were due by the last Friday in January. All reports have been reviewed. Where necessary, clarification or minor changes have been requested and addressed except one. In general, only a small number of reports require any changes and that was true again this quarter.

Criminal Justice - Mental Health: The Champaign County Reentry Council met in early February. The Reentry Program Summary Report submitted to the County Board was discussed. The report covers the three years the program has been in operation. As noted last month, Rosecrance has proposed to the County Board the current reentry contract be extended, at no additional cost, through the end of the June rather than February. The Champaign County Board will consider the request at the February Committee of the Whole meeting.

25

The Council also discussed a pre-arrest diversion program grant opportunity available through the federal Department of Human Services' Substance Abuse and Mental Health Services Administration (SAMHSA). Champaign County would be the applicant. The application is due March 5, 2018.

Continuum of Care/Council of Service Providers to the Homeless: The Continuum held the point in time survey on January 26<sup>th</sup>. The survey is required by the Department of Housing and Urbana Development. The survey involves a "street count" of persons who are homeless as well as those housed in emergency shelters or other housing programs. At the February meeting, it was reported the street count teams collected 11 surveys of unsheltered persons on the 26<sup>th</sup>. Count from shelters is still pending for two providers. Once available the 2018 survey results will be compiled and a report filed with HUD and shared back to the Continuum.

The Council of Service Providers to the Homeless heard a presentation by Danielle Chynoweth, Cunning Ham Township Supervisor on services available from the Township. The Township operates six programs with three that new under Ms. Chynoweth's leadership. In addition to general assistance, transportation assistance and grants to social service providers, the Township now offers homeless assistance, advocacy, and public education. Also at the meeting, Austin's Place, the eight bed single women's emergency shelter announced it will remain open through the end of March instead of closing mid-month. Austin's Place is serving 2 to 3 women per night down from the 6 to 8 served during the severest cold weather. The C-U Men's Emergency Shelter has been operating at capacity (30 beds) with overflow of a dozen others going to the Salvation Army. The C-U Men's Emergency Shelter is providing two staff at each location putting some pressure on the operating budget. The shelter will remain open through March.

United Way Community Impact Committee: As reported last month, United Way is in the midst of its application review process. As a member of the Community Impact Committee, I am serving on one of the review panels. The panel I am on has been assigned five health related applications to review. None of these applications involve programs funded by the CCMHB or CCDDDB. The review process includes agency interviews followed by a rating of each application. The panel I am on is conducting one interview per week and will be completed by the end of February.

Other Activity: Attended the Child and Adolescent Local Area Network meeting. Joy Henderson from Skill Sprout-Champaign Region presented to the group. Skill Sprout works with children with developmental delays. A range of services are offered through the jump start and early start programs. Lynn and I also met with representatives of Carle Foundation Hospital's Healthy Beginnings Initiative. Carle is targeting underserved neighborhoods of Champaign and Urbana to increase access to healthcare and social services. Healthy Beginnings has an early childhood focus targeting families with young children, from pregnancy to age two.

**Stephanie Howard-Gallo**

**Operations and Compliance Coordinator Staff Report –**

**February 2018 Board Meeting**

**SUMMARY OF ACTIVITY:**

**Second Quarter Reporting:**

Second Quarter financial and program reports were due at the end of January. Most agencies report on time. Illinois Association of Microboards and Cooperatives (IAMC) asked for and was granted an extension to complete their reports. Several agencies were asked to revise and/or correct their reports. As of the writing of this report, no letters of non-compliance have been sent out for the 2<sup>nd</sup> quarter.

A few of the agencies forget to send us their approved Board minutes, but this is usually resolved by an informal email to them.

**Ebertfest:**

On January 12<sup>th</sup> Lynn Canfield, Shandra Summerville, and I attended a meeting with Andrew Hall, the Visiting Project Coordinator, Roger Ebert's Film Festival University of Illinois | College of Media. We talked about past activities and what we are looking for this year. We have a lot of artists that are interested in showing/selling their work at the art show outside of Ebertfest and we are organizing what we need to accommodate them.

**Site Visits:**

I participated in a site visit on February 8<sup>th</sup> (along with Kim Bowdry and Chris Wilson) for C-U Able, held at the YMCA in Champaign. We verified first quarter reporting and talked about how the program was doing.

**Association of Community Mental Health Authorities of Illinois (ACMHAI):**

In April, I will attend their strategic planning meeting in Lynn Canfield's place that is being held in Utica, IL.

**Other:**

- Preparing meeting materials for CCMHB/CCDDB regular meetings and study sessions/presentations.
- Composing minutes for the meetings.
- Preparing applications for review.

## **February 2018 Monthly Staff Report- Shandra Summerville**

### **Cultural and Linguistic Competence Coordinator**

#### **Agency Cultural and Linguistic Competence (CLC) Technical Assistance, Monitoring, Support and Training for CCMHB/DDB Funded Agencies**

**C-U Able-** CLC Board Training was held January 27 at 10:00am. Four members of the board were present for the training.

**Promise Healthcare-** Staff members reached out about FY19 CLC Plan Instructions.

**Community Choices-** I conducted the CLC Site Visit for Community Choices on January 22, 2018.

**Community Services Center of Northern Champaign County-** Annual CLC Training has been scheduled for March 2018 and Technical Assistance was provided for 2019 CLC Plan.

**Crisis Nursery-** I conducted the CLC Site Visit for Crisis Nursery on January 26, 2018.

**Developmental Services Center-** I conducted the CLC Site Visit for DSC on January 22, 2018.

#### **CLC Coordinator Direct Service Activities:**

##### **2019 CLC Applications/2018 CLC 2<sup>nd</sup> Quarter Reports**

I am currently reviewing the 2019 CLC Plans for completion and reviewing the 2<sup>nd</sup> Quarter Reports. 6 organizations have not completed the 2<sup>nd</sup> quarter CLC reporting requirement. The organizations will be notified and will have until the end of the month to complete the 2<sup>nd</sup> Quarter reporting requirement.

**Georgetown University-** I have started the preparation work for the Georgetown University Leadership Academy for Cultural Diversity. I am preparing to complete the Leadership Practices Inventory for myself and I have invited 10 people to participate as observers.

#### **Anti-Stigma Activities/Community Collaborations and Partnerships**

##### **University of Illinois African-American Community Healing Storytelling Project-**

I have been working on the Ethics training for human subjects in order to participate as a community member on the research of this Story Telling Project. The actual date for the event to report in the community will be held in September.

## **YWCA/Welcome Center**

The Welcome Center has partnered with the YWCA Women in Leadership Program to begin to look at solutions about implementing cultural competence training for the staff and volunteers of the New American Welcome Center. The project was accepted by the Board and the Cultural Competence training workshop are being developed and will be implemented in the spring semester.

## **Disability Resource Expo Committee**

I have received volunteers from 3 groups that are interested in volunteering with the Expo. We are still recruiting volunteers for the disAbility Expo 2018. Please email me potential volunteers and interested groups at [shandra@ccmhb.org](mailto:shandra@ccmhb.org).

**AIR- Alliance for Inclusion and Respect-** Please continue to support the Artists and notice new artwork that has been submitted on the website [www.champaigncountyair.com](http://www.champaigncountyair.com)

**CU-Cradle to Career-** I attended the Annual CU Cradle to Career Community Report Meeting. This meeting talked about the new partnerships that have been developed with Carle Hospital about the workforce readiness program. I have included a copy of the community report.



## C. Growing EQUITY

Imagine each child as a plot in a "school garden." If one plot has good soil and the next plot has toxic waste underneath, is it truly "fair" to expect the same harvest from both, especially when the conditions in those plots are largely out of the control of the school?

By contrast, Equity holds people of differing needs to a single expectation and gives them what they need to meet that expectation.<sup>15</sup> The research shows that upholding standards of excellence while bringing equity to the classroom/school/community lifts everyone up.<sup>16</sup> Classroom/school environments improve, students report being more engaged, and scores improve for all.<sup>17</sup> And when disparities are present at birth, the most economical way for a community to create equality is to bring equity at the earliest age possible.<sup>18</sup>

What would this look like? A COLLECTIVE GARDEN. How does it happen? It begins with questions such as:

- Does CU have the right tools and interventions in place?
- Are CU organizations using the metrics that measure the needed outcomes?

Does the CU have the "community will" needed to change our individual, organizational and community expectations and behaviors it will take for Equity to pave the way for Equality?

If that last question is confusing, this is what Don Owen, the Urbana Superintendent and a member of the CUC2C Steering Committee recently said, "I have been inspired to focus in issues of racial equity through not only examining my own implicit biases, but also examining institutional and structural racism in schools and in society."



### 2017 Seedling

The University of Illinois has funded a two year, full-time Measurement and Evaluation position within the UI Center for Innovation and Learning so CUC2C can work with community partners to identify and track the community progress indicators that can propel growth.

## INCH BY INCH: CUC2C in 2018

CUC2C has fostered increased collaboration and programming. Yet the lack of capacity for measurement and evaluation has blunted our potential for sustainable change. With the advent of a full-time Measurement Coordinator, CUC2C is particular excited about our work in 2018:

- Build the community's capacity to identify common measurable outcomes.
- Set community targets tagged to outcomes.
- Launch a high school Health Care Careers pilot (led by the Chamber of Commerce and Carle)
- Provide a Ready!4 Kindergarten training and tools to family day care providers.
- Co-Sponsor a Community Event on Equity and Race (with Champaign Community Coalition)

## CU Cradle2Career



### Our Mission

To effectively align community resources so each child can graduate and succeed.

### Our Aspirational Goals

- Goal 1: Every child is ready to learn when entering kindergarten.
- Goal 2: Every student has the support needed to succeed.
- Goal 3: Every student is workforce-ready at graduation.
- Goal 4: Every student graduates.  
Every graduate completes a post-secondary credential.

<sup>15</sup><http://illinoisreportcard.com/>; combined proportionally by UI Data Analytics

<sup>16</sup><https://casei.org/impact/>

<sup>17</sup>[http://www.dhhs.tn.gov.au/vitwpw/principles/determinants\\_of\\_health](http://www.dhhs.tn.gov.au/vitwpw/principles/determinants_of_health)

<sup>18</sup><http://health-equity.jb.umd.edu/75/>

<sup>19</sup><http://www.oecd.org/pisa/>

<sup>20</sup><http://www.nctan.org/trauma-types/complex-trauma/effects-of-complex-trauma/#9>

<sup>21</sup><https://aceschoolhigh.com/aces-101/>

<sup>22</sup>ibid 6

<sup>23</sup>mw.org

<sup>24</sup>[https://www.edweek.org/ew/articles/2013/02/27/22cutill\\_o\\_h32.html](https://www.edweek.org/ew/articles/2013/02/27/22cutill_o_h32.html)

<sup>25</sup><https://www.sclerom.com/blog/facts-about-how-poverty-impacts-education>

<sup>26</sup><https://www.vox.com/2015/10/31/9646504/discipline-race-charts>

<sup>27</sup><http://sites.psu.edu/aspay/2017/03/25/racism-is-learned-at-an-early-age/>

<sup>28</sup><https://www.theatlantic.com/education/archive/2016/10/how-the-stress-of-racism-affects-learning/503567/>

<sup>29</sup><https://edtrust.org/the-equity-line/diversity-offers-clear-path-brighter-futures-children/>

<sup>30</sup><http://www.centerforpubliceducation.org/educationalequity>

<sup>31</sup><https://theclmnequation.org/resource/13-roi-toolbox/>

 Find us on Facebook



2017 Annual Community Report

What kind of garden does CU want to be?



Cities are like gardens; Champaign and Urbana share some commonalities yet are unique. However, the phrase "Chambana" points to how our two cities are also one "Community Garden."

What type of garden is that? Champaign-Urbana Cradle to Career (CUC2C) would argue that CU has been an allotment garden. Each entity tends to operate independently. They all share the access to water, yet each entity's harvest depends upon their own resources. If you've seen the community gardens at Meadowbrook or Dodds in early August, you've seen that the harvests range from prolific to wilting.

A collective garden can maximize the harvest for all by putting the skills of all to their best use. When all sectors (government, schools, businesses, non-profits, and faith organizations) work together, the resources can be used more effectively to multiply the harvest: young adults ready to be productive citizens contributing to the vitality of our community.



## CU Cradle2Career



## % of Students Who Meet or Exceed State Standards

Measure	Kindergarten Readiness	3rd Grade Composite	8th Grade Composite	Freshman On Track	11th Grade SAT*	4 Year Grad Rate	College Enrollment
CU 2017	58% Urb	30.7%	24.3%	81.9%		85.3%	74.8%
2017 IL avg	n/a*	36%	33%	87.1%	n/a*	87%	
CU 3 yr. avg	n/a*	33%	35%	79.2%	n/a*	n/a*	n/a*

data taken from Illinois Report Card (illinoisreportcard.com) in Jan 2018; district scores have been combined proportionally according to numbers of students  
\*n/a not applicable because not available

## A. 2017 Harvest in Brief

What the above Table CAN Tell Us:

- (1) The Kindergarten Readiness score is Urbana's; we will have combined scores in 2018 Report.
- (2) The scores are for *this particular class* but each cohort is different.
- (3) Overall, CU scores are slightly lower than the state scores.

What this Table Can't Tell Us:

- (a) What causes the score changes
- (b) How social-emotional skill building correlates with achievement.?

What CU Can't See:

- Programs begun 2015-2017 (aka "seedlings"):
- (a) may not show results for several years;
  - (b) must be scaled widely if to make impact.

### 2017 Seedling

With CUC2C's support, CU Early and Head Start have enhanced their home visitation to better serve over 100 families. Funding was provided by CU Rotary, PNC Bank and United Way.

## B. Digging into the Roots

People's wellbeing correlate with the conditions in which people are born, grow, love, work, and age.<sup>3</sup> Since learning begins at birth and occurs both inside and outside of school, we must understand the societal conditions in the CU garden.

The World Health Organization found that the top predictor of wellbeing is one's position on the social ladder: "Whether measured by income, education, residence or occupation, those people on the top of the ladder have the most power and resources, and on average live longer and healthier lives."<sup>4</sup>

However, the Program for International Student Assessment (PISA) found that the countries that address social inequalities have better learning outcomes.<sup>5</sup> So it is not the presence of disparities but how communities choose to address them.

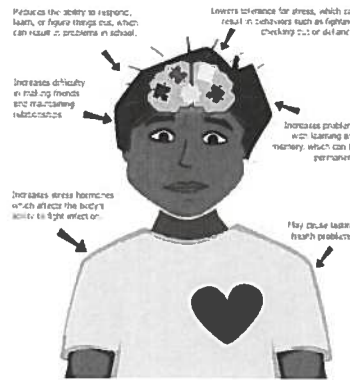
Here are three nationally recognized "root issues."

### 1. Childhood TRAUMA: "ACES"

A recent study found that the estimated total lifetime costs of "currently identified" childhood trauma in a 12 month period to be \$124 billion dollars.<sup>6</sup>

Composed of up to 16 types "Adverse Child Experiences" (depending upon the state)<sup>7</sup>, research shows that prolonged exposure to at least four ACES can induce life-long changes in a child's brain (right) that negatively impact *their lives and our lives* such as:

- Disruptive behavior that reduces all students' learning
- Reducing the quality of the labor pool
- Increase of crime and violence.<sup>8</sup>



The Good news: When youth and families get the support needed, youth can build the resilience needed to overcome their trauma.

### 2017 Seedling

"CUC2C is partnering with CC, Community schools, Healthy Beginnings, and others to build a trauma-informed CU.



## 2. Income Disparities

Poverty is one of the ACES. Since 8635 CU students (60%) qualify for free/reduced lunch, what does the impact look like (as compared to higher income students)?

- Poorer verbal ability<sup>9</sup>
- Poorer attendance<sup>10</sup>
- More issues with self-control<sup>11</sup>
- More difficulties with Executive Functioning<sup>11</sup>
- Check out the Table of 3rd and 8th grade (above left)

### The Results?

The impact of poverty on Kindergarten Readiness is evident by 3rd grade—only 22% of low income students succeeding. Are we surprised our outraged?

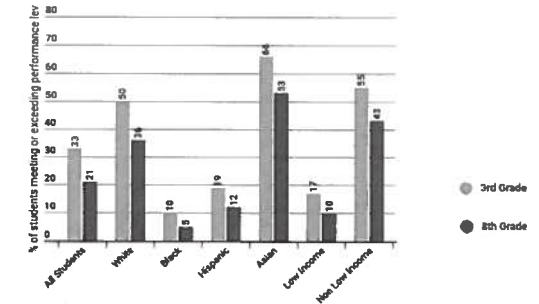
### 2017 Seedling

Baby Talk Newborn Encounters is meeting families in post-partum and offering ongoing support. In its second year, it is now seeing about 1/4 of all Carle's moms of newborns.

## 3. Legacy of Racism

46% of our students are youth of color, so why are scores so disproportionate?

Look at the 3rd grade and 8th grade scores (below).



Something beyond income is at play here, especially when one can look at national elementary suspension scores and the numbers seemingly flip.<sup>12</sup>

Researchers have found "race-based stressors" impact children as young as 3 years old.<sup>13</sup> If not addressed, these stressors create both negative physiological and psychological reactions that impede their growth.<sup>14</sup> Thus, as the first domino falls (kindergarteners who are not prepared), the pressure on the rest of the dominoes increases. And at each stage, a child's lack of achievement precludes them from taking advantage of opportunities that could spur future growth.

The Good news: Cities across the country are actively seeking to understand and address the issues of racism in their communities.

### 2017 Seedling

The CU Trades Council began the CU Initiative for Labor Diversity.

**disABILITY Resource Expo: Reaching Out For Answers**  
**Board Report**  
**February, 2018**

13

**11<sup>th</sup> disABILITY Resource Expo – Coming Saturday, April 7, 2018: Next Steering Committee-March 6**

**Exhibitors:** To date, 43 exhibitor applications have been received. An additional 12 exhibitors have confirmed their plan to participate. Applications are due by Feb. 21, with an absolute cut-off deadline of Feb. 28, as well as a maximum of 100 exhibitors. The next Exhibitor Sub-committee will be Feb. 13.

This year's scavenger hunt will feature local star athletes from a wide variety of adaptive sports. Visitors will be able to learn about the many sports being excelled in by individuals with disabilities. We are pleased to have DRES assisting us with this aspect of the Expo. This game is the impetus for receiving feedback (evaluations) from our visitors, which aides in planning for future Expos.

**Marketing/Sponsorship:** This sub-committee last met on January 11. Sponsorship packets have been sent to a number of businesses in our area, and we are seeing some good returns. To date, we have received cash donations of \$5,210 and in-kind donations amounting in excess of \$6,000. We have also raised nearly \$600 from our fundraisers.

Our promotional plan and schedule has been implemented. Window clings are on several vehicles. We have some additional clings available to anyone who wishes to assist us in promoting this years' Expo. There is no cost to do this, and it takes only about 15 minutes to get them applied at Personal Mobility in Champaign. The clings have been a great way for our members to help promote the event on their personal vehicles. Please let Barb know if you'd like one. Also, we still have Save-The-Date/website magnets available.

Radio advertising has been scheduled with S. J. Broadcasting and News-Gazette Media (WDWS/WHMS/WKIO). We have a number of interviews scheduled with both of these media outlets, beginning the week prior to the Expo. We are, also, working to set up some TV interviews.

MTD buses will be advertising the Expo beginning March 1. Our newsletter blurb has been appearing in a number of agencies newsletters. Thank you to those agencies who have helped get the word out in this way.

Additional promotional materials will be on the streets soon, including posters, school flyers and yard signs. A huge thanks goes out again to our friends at Quality Med Transport, as they will be placing our 200 yard signs in prominent sites throughout the community.

Steering Committee member, Allison Boot, is assisting us with our social media presence, and will be working with the News-Gazette on some of this, as well.

32



With the recent transfer of Presence Medical Center to OSF, Barb has met with a representative from OSF to encourage their participation in the Expo. We feel the Expo will be a great avenue for OSF to get their name out into the community.

Thanks to our friends at Einstein Bagels and Meijer, we will once again be offering our Exhibitor Hospitality area..

We are winding down another Schwan's Cares Fundraiser, but are still receiving 5% of orders made through this campaign. If you would like to support the Expo through the Schwan's Fundraiser, please place your Schwan's orders through their website, [www.schwans-cares.com/c/35969](http://www.schwans-cares.com/c/35969) or phone in your order at 1-855-870-7208 and provide our Campaign ID# 35969. This has been a great on-going fundraiser for us over the past couple of years, so please tell your friends and family how they can help.

**Entertainment/Accessibility:** Entertainment will be occurring on two different stages at the Expo. Diane Ducey and Josh Laskowski from S.J. Broadcasting will be our wonderful MC's again this year. Debra Myers Sounds of Music Studio in collaboration with Penguin Project will perform, as will instrumentalist, Kevin Elliott. Further information will be coming soon, as our entertainment line-up is finalized.

Accessibility is always a critical element of the Expo. This sub-committee has identified sign language and Spanish interpreters, personal assistants, equipment needs, and other accessibility concerns for the Expo. Due to current technology, they have determined that thumb drives and downloading program information to smart phones will be more relevant than the CD's we have used in the past. We will be offering this service to visitors on the spot at the Accessibility Booth.

**Children's Activity Room:** Once again, our friends at First Federal Savings Bank and Flaghouse have generously signed on to sponsor this important room at the Expo. Both of these businesses have gone above and beyond in their support of the Expo for many years, and we are truly grateful for their support.

**Volunteers:** Volunteers are, again, able to sign up on-line to help with various aspects of the Expo, both before, during and after the event.

**Website:** The weekend of Feb. 10 saw the roll-out of our new, fully accessible website. It spotlights an expanded search feature for the Expo Resource Book, as well as featuring greater ADA accessibility for our viewers. A huge thanks goes out to Jim and Pat Mayer, and Chris Hamb with Chrispmmedia for their hard work on this project.

Expo website improvements continue, including work towards greater website accessibility, and an expanded search feature for the Expo Resource Guide. There are approximately 140 different organizations listed. It is hoped that many participating local organizations will consider adding a link on their websites, directing people to the Expo website/directory.

Respectfully submitted  
Barb Bressner & Jim Mayer  
Consultants

33

CHAMPAIGN COUNTY

EXPENDITURE APPROVAL LIST

2/09/18

PAGE 1

VENDOR NO	VENDOR NAME	TRN DTE	B N CD	TR NO	TRANS NO	PO NO	CHECK NUMBER	CHECK DATE	ACCOUNT NUMBER	ACCOUNT DESCRIPTION	ITEM DESCRIPTION	EXPENDITURE AMOUNT
*** FUND NO. 090 MENTAL HEALTH												
*** DEPT NO. 053 MENTAL HEALTH BOARD												
16	CHAMPAIGN COUNTY TREASURER								GENERAL CORP FND 080			
		1/26/18	80 VR	53-	477		571140	1/31/18	090-053-533.29-00	COMPUTER/INF TCH SERVICESFY17	IT COMPUTER SV	1,526.69
											VENDOR TOTAL	1,526.69 *
25	CHAMPAIGN COUNTY TREASURER								RENT-GENERAL CORP			
		1/26/18	02 VR	53-	66		571141	1/31/18	090-053-533.50-00	FACILITY/OFFICE RENTALS	FEB OFFICE RENT	1,739.64
											VENDOR TOTAL	1,739.64 *
41	CHAMPAIGN COUNTY TREASURER								HEALTH INSUR FND 620			
		1/29/18	03 VR	620-	8		571142	1/31/18	090-053-513.06-00	EMPLOYEE HEALTH/LIFE INS	JAN HI,LI, & ADMIN	3,850.30
											VENDOR TOTAL	3,850.30 *
88	CHAMPAIGN COUNTY TREASURER								I.M.R.F. FUND 088			
		1/11/18	80 VR	88-	75		570536	1/19/18	090-053-513.02-00	IMRF - EMPLOYER COST	IMRF 1/5 P/R FY17	1,199.17
		2/05/18	05 VR	88-	2		571365	2/09/18	090-053-513.02-00	IMRF - EMPLOYER COST	IMRF 1/19 P/R	1,219.51
											VENDOR TOTAL	2,418.68 *
104	CHAMPAIGN COUNTY TREASURER								HEAD START FUND 104			
		1/26/18	01 VR	53-	41		571156	1/31/18	090-053-533.92-00	CONTRIBUTIONS & GRANTS	FEB SOC/EMOT SVCS	4,637.00
											VENDOR TOTAL	4,637.00 *
161	CHAMPAIGN COUNTY TREASURER								REG PLAN COMM FND075			
		1/26/18	01 VR	53-	42		571159	1/31/18	090-053-533.92-00	CONTRIBUTIONS & GRANTS	FEB JUSTICE DIVERSN	5,229.00
		1/26/18	01 VR	53-	42		571159	1/31/18	090-053-533.92-00	CONTRIBUTIONS & GRANTS	FEB YOUTH ASSMNT CT	6,362.00
											VENDOR TOTAL	11,591.00 *
176	CHAMPAIGN COUNTY TREASURER								SELF-FUND INS FND476			
		1/11/18	80 VR	119-	86		570542	1/19/18	090-053-513.04-00	WORKERS' COMPENSATION	INSWK COMP 12/8,15,22P	169.12
		2/05/18	80 VR	118-	126		571372	2/09/18	090-053-533.20-00	INSURANCE	FY17 PROPERTY INS M	340.15
		2/05/18	80 VR	118-	126		571372	2/09/18	090-053-533.20-00	INSURANCE	FY17 LIAB INS MH	6,822.43

67

49

CHAMPAIGN COUNTY

EXPENDITURE APPROVAL LIST

2/09/18

PAGE 2

VENDOR NO	VENDOR NAME	TRN DTE	B N CD	TR NO	TRANS NO	PO NO	CHECK NUMBER	CHECK DATE	ACCOUNT NUMBER	ACCOUNT DESCRIPTION	ITEM DESCRIPTION	EXPENDITURE AMOUNT
*** FUND NO. 090 MENTAL HEALTH												
		2/05/18	05 VR	119-	7		571373	2/09/18	090-053-513.04-00	WORKERS' COMPENSATION INSWK COMP	1/5,19 PR	85.60
		2/06/18	81 VR	119-	89		571373	2/09/18	090-053-513.04-00	WORKERS' COMPENSATION INSWC	1/5,19,26 PR FY1	84.61
											VENDOR TOTAL	7,501.91 *
179	CHAMPAIGN COUNTY TREASURER								CHLD ADVC CTR FND679			
		1/26/18	01 VR	53-	40		571163	1/31/18	090-053-533.92-00	CONTRIBUTIONS & GRANTS	FEB CAC	3,090.00
											VENDOR TOTAL	3,090.00 *
188	CHAMPAIGN COUNTY TREASURER								SOCIAL SECUR FUND188			
		1/11/18	80 VR	188-	119		570544	1/19/18	090-053-513.01-00	SOCIAL SECURITY-EMPLOYER FICA	1/5 P/R FY17	1,113.29
		2/05/18	05 VR	188-	9		571375	2/09/18	090-053-513.01-00	SOCIAL SECURITY-EMPLOYER FICA	1/19 P/R	1,132.19
											VENDOR TOTAL	2,245.48 *
5780	BP COMPUTER SERVICES											
		1/26/18	01 VR	53-	24		571180	1/31/18	090-053-533.07-00	PROFESSIONAL SERVICES	1ST QTR COMPUTER SV	750.00
		1/26/18	02 VR	53-	36		571180	1/31/18	090-053-522.44-00	EQUIPMENT LESS THAN \$5000	INV 5074 12/27	1,075.00
											VENDOR TOTAL	1,825.00 *
15495	CHAMPAIGN URBANA AREA PROJECT								SUITE #702			
		1/26/18	01 VR	53-	43		571194	1/31/18	090-053-533.92-00	CONTRIBUTIONS & GRANTS	FEB NGHBRHD CHAMPIO	1,667.00
		1/26/18	01 VR	53-	43		571194	1/31/18	090-053-533.92-00	CONTRIBUTIONS & GRANTS	FEB TRUCE	6,250.00
											VENDOR TOTAL	7,917.00 *
16930	CHRISP MEDIA, LLC											
		2/02/18	02 VR	53-	26		571402	2/09/18	090-053-533.07-00	PROFESSIONAL SERVICES	1ST QTR PROF FEE	234.00
											VENDOR TOTAL	234.00 *
18052	COMCAST CABLE - MENTAL HEALTH								ACCT AC# 8771403010773527			
		1/26/18	02 VR	53-	67		571199	1/31/18	090-053-533.29-00	COMPUTER/INF TCH SERVICES	8771403010773527 FE	116.42
											VENDOR TOTAL	116.42 *
18203	COMMUNITY CHOICE, INC								SUITE 419			
		1/26/18	01 VR	53-	44		571201	1/31/18	090-053-533.92-00	CONTRIBUTIONS & GRANTS	FEB COMMUNITY LIVIN	5,250.00

CHAMPAIGN COUNTY

EXPENDITURE APPROVAL LIST

2/09/18

PAGE 3

VENDOR NO	VENDOR NAME	TRN DTE	B N CD	TR NO	TRANS NO	PO NO	CHECK NUMBER	CHECK DATE	ACCOUNT NUMBER	ACCOUNT DESCRIPTION	ITEM DESCRIPTION	EXPENDITURE AMOUNT
*** FUND NO. 090 MENTAL HEALTH												
		1/26/18	01 VR	53-	44		571201	1/31/18	090-053-533.92-00	CONTRIBUTIONS & GRANTS	FEB SELF DETERMINAT	8,000.00
											VENDOR TOTAL	13,250.00 *
18210	COMMUNITY FOUNDATION - DREAAM HOUSE									FIRST PRESBYTERIAN		
		1/26/18	01 VR	53-	45		571202	1/31/18	090-053-533.92-00	CONTRIBUTIONS & GRANTS	FEB DREAAM HOUSE	4,833.00
											VENDOR TOTAL	4,833.00 *
18230	COMMUNITY SERVICE CENTER OF NORTHERN									CHAMPAIGN COUNTY		
		1/26/18	01 VR	53-	46		571204	1/31/18	090-053-533.92-00	CONTRIBUTIONS & GRANTS	FEB RESOURCE CONNEC	5,550.00
											VENDOR TOTAL	5,550.00 *
18430	CONSOLIDATED COMMUNICATIONS											
		1/12/18	02 VR	28-	1		570595	1/19/18	090-053-533.33-00	TELEPHONE SERVICE	AC 99790003460 1/1	32.11
											VENDOR TOTAL	32.11 *
19260	COURAGE CONNECTION											
		1/26/18	01 VR	53-	47		571207	1/31/18	090-053-533.92-00	CONTRIBUTIONS & GRANTS	FEB COURAGE CONNECT	5,579.00
											VENDOR TOTAL	5,579.00 *
19346	CRISIS NURSERY											
		1/26/18	01 VR	53-	48		571208	1/31/18	090-053-533.92-00	CONTRIBUTIONS & GRANTS	FEB BEYOND BLUE	5,833.00
											VENDOR TOTAL	5,833.00 *
22300	DEVELOPMENTAL SERVICES CENTER OF									CHAMPAIGN COUNTY INC		
		1/26/18	01 VR	53-	49		571213	1/31/18	090-053-533.92-00	CONTRIBUTIONS & GRANTS	FEB INDIV/FAMILY SU	32,721.00
											VENDOR TOTAL	32,721.00 *
22730	DON MOYER BOYS & GIRLS CLUB											
		1/26/18	01 VR	53-	50		571215	1/31/18	090-053-533.92-00	CONTRIBUTIONS & GRANTS	FEB CU CHANGE	8,333.00
		1/26/18	01 VR	53-	50		571215	1/31/18	090-053-533.92-00	CONTRIBUTIONS & GRANTS	FEB YOUTH/FAMILY OR	13,333.00
											VENDOR TOTAL	21,666.00 *

CHAMPAIGN COUNTY

EXPENDITURE APPROVAL LIST

2/09/18

PAGE 4

VENDOR NO	VENDOR NAME	TRN DTE	B N CD	TR	TRANS NO	PO NO	CHECK NUMBER	CHECK DATE	ACCOUNT NUMBER	ACCOUNT DESCRIPTION	ITEM DESCRIPTION	EXPENDITURE AMOUNT
*** FUND NO. 090 MENTAL HEALTH												
24095	EMK CONSULTING LLC											
		1/12/18	01 VR	53-	37		570609	1/19/18	090-053-533.07-00	PROFESSIONAL SERVICES	INV 213 1/5	3,205.04
		1/12/18	91 VR	53-	473		570609	1/19/18	090-053-533.07-00	PROFESSIONAL SERVICES	INV 210 1/5	3,142.23
		1/12/18	91 VR	53-	473		570609	1/19/18	090-053-533.07-00	PROFESSIONAL SERVICES	INV 215 1/9	1,750.00
		1/26/18	90 VR	53-	479		571219	1/31/18	090-053-533.07-00	PROFESSIONAL SERVICES	INV 217 1/12 FY17	600.00
											VENDOR TOTAL	8,697.27 *
24215	EAST CNTRL IL REFUGEE MUTUAL ASSIST CTR											
		1/26/18	01 VR	53-	51		571220	1/31/18	090-053-533.92-00	CONTRIBUTIONS & GRANTS	FEB FAM SUPPORT	2,083.00
											VENDOR TOTAL	2,083.00 *
26000	FAMILY SERVICE OF CHAMPAIGN COUNTY									GRANTS		
		1/26/18	01 VR	53-	52		571223	1/31/18	090-053-533.92-00	CONTRIBUTIONS & GRANTS	FEB SELF HELP	2,369.00
		1/26/18	01 VR	53-	52		571223	1/31/18	090-053-533.92-00	CONTRIBUTIONS & GRANTS	FEB SENIOR COUNSEL	11,861.00
		1/26/18	01 VR	53-	52		571223	1/31/18	090-053-533.92-00	CONTRIBUTIONS & GRANTS	FEB COUNSELING	2,083.00
											VENDOR TOTAL	16,313.00 *
26760	FIRST FOLLOWERS											
		1/26/18	01 VR	53-	53		571227	1/31/18	090-053-533.92-00	CONTRIBUTIONS & GRANTS	FEB PEER MENTORING	4,952.00
											VENDOR TOTAL	4,952.00 *
30550	GROW IN ILLINOIS											
		1/26/18	01 VR	53-	54		571234	1/31/18	090-053-533.92-00	CONTRIBUTIONS & GRANTS	FEB PEER SUPPORT	1,667.00
											VENDOR TOTAL	1,667.00 *
44570	MAHOMET AREA YOUTH CLUB									601 EAST FRANKLIN		
		1/26/18	01 VR	53-	55		571248	1/31/18	090-053-533.92-00	CONTRIBUTIONS & GRANTS	FEB BLAST	1,250.00
		1/26/18	01 VR	53-	55		571248	1/31/18	090-053-533.92-00	CONTRIBUTIONS & GRANTS	FEB MEMBERS MATTER	1,000.00
											VENDOR TOTAL	2,250.00 *
51600	NEWS GAZETTE											
		1/12/18	91 VR	53-	474		2350	1/19/18	090-053-533.70-00	LEGAL NOTICES, ADVERTISING	7084 1369765 12/13	94.82
											VENDOR TOTAL	94.82 *

24215  
57

CHAMPAIGN COUNTY

EXPENDITURE APPROVAL LIST

2/09/18

PAGE 5

VENDOR NO	VENDOR NAME	TRN DTE	B N CD	TR NO	TRANS NO	PO NO	CHECK NUMBER	CHECK DATE	ACCOUNT NUMBER	ACCOUNT DESCRIPTION	ITEM DESCRIPTION	EXPENDITURE AMOUNT
*** FUND NO. 090 MENTAL HEALTH												
54650	PEPSI COLA CHAMPAIGN-URBANA BOTTLING											
		2/02/18	02 VR	53-	39		571451	2/09/18	090-053-522.02-00	OFFICE SUPPLIES	INV 81104452 1/8	12.40
		2/02/18	02 VR	53-	39		571451	2/09/18	090-053-522.02-00	OFFICE SUPPLIES	INV 81104565 1/22	18.60
		2/02/18	02 VR	53-	39		571451	2/09/18	090-053-533.51-00	EQUIPMENT RENTALS	INV 10024545 1/19	6.95
		2/02/18	90 VR	53-	476		571451	2/09/18	090-053-522.02-00	OFFICE SUPPLIES	INV 81104348 12/27	18.60
											VENDOR TOTAL	56.55 *
57196	PROMISE HEALTHCARE											
		1/26/18	01 VR	53-	56		571267	1/31/18	090-053-533.92-00	CONTRIBUTIONS & GRANTS	FEB WELLNESS/JUSTIC	4,833.00
		1/26/18	01 VR	53-	56		571267	1/31/18	090-053-533.92-00	CONTRIBUTIONS & GRANTS	FEB MH SERVICES	18,500.00
											VENDOR TOTAL	23,333.00 *
59434	RAPE, ADVOCACY, COUNSELING & EDUC SRVCS											
		1/26/18	01 VR	53-	57		571269	1/31/18	090-053-533.92-00	CONTRIBUTIONS & GRANTS	FEB COUNSEL/CRISIS	1,550.00
											VENDOR TOTAL	1,550.00 *
61780	ROSECRANCE, INC.											
		1/26/18	01 VR	53-	58		571272	1/31/18	090-053-533.92-00	CONTRIBUTIONS & GRANTS	FEB CRIMINAL JUSTIC	25,022.00
		1/26/18	01 VR	53-	58		571272	1/31/18	090-053-533.92-00	CONTRIBUTIONS & GRANTS	FEB CRISIS/ACCESS	19,000.00
		1/26/18	01 VR	53-	58		571272	1/31/18	090-053-533.92-00	CONTRIBUTIONS & GRANTS	FEB TRANS HOUSING	1,167.00
											VENDOR TOTAL	45,189.00 *
61781	ROSECRANCE, INC.											
		1/26/18	01 VR	53-	59		571273	1/31/18	090-053-533.92-00	CONTRIBUTIONS & GRANTS	FEB CJ SUB TREATMEN	883.00
		1/26/18	01 VR	53-	59		571273	1/31/18	090-053-533.92-00	CONTRIBUTIONS & GRANTS	FEB FRESH START	6,417.00
		1/26/18	01 VR	53-	59		571273	1/31/18	090-053-533.92-00	CONTRIBUTIONS & GRANTS	FEB PLL EXTEND CARE	25,055.00
		1/26/18	01 VR	53-	59		571273	1/31/18	090-053-533.92-00	CONTRIBUTIONS & GRANTS	FEB PREVENTION	4,854.00
		1/26/18	01 VR	53-	59		571273	1/31/18	090-053-533.92-00	CONTRIBUTIONS & GRANTS	FEB SPECIALTY COURT	16,917.00
											VENDOR TOTAL	54,126.00 *
69540	STEVIE JAY BROADCASTING											
		1/26/18	02 VR	53-	68		571288	1/31/18	090-053-533.89-00	PUBLIC RELATIONS	AD ID 1913 1/22	2,500.00
											VENDOR TOTAL	2,500.00 *

CHAMPAIGN COUNTY

EXPENDITURE APPROVAL LIST

2/09/18

PAGE 6

VENDOR NO	VENDOR NAME	TRN DTE	B N CD	TRANS NO	PO NO	CHECK NUMBER	CHECK DATE	ACCOUNT NUMBER	ACCOUNT DESCRIPTION	ITEM DESCRIPTION	EXPENDITURE AMOUNT
*** FUND NO. 090 MENTAL HEALTH											
76107	UNITED CEREBRAL PALSY LAND OF LINCOLN	1/26/18	02 VR	53- 60		571295	1/31/18	090-053-533.92-00	CONTRIBUTIONS & GRANTS	FEB VOCATIONAL TRAI	4,324.00
										VENDOR TOTAL	4,324.00 *
76867	UNIV OF IL SPONSORED PROG & RESEARCH ADM	1/26/18	02 VR	53- 65		571296	1/31/18	090-053-533.07-00	PROFESSIONAL SERVICES	FEB MHB18-039 CONSL	4,414.00
										VENDOR TOTAL	4,414.00 *
77280	UP CENTER OF CHAMPAIGN COUNTY	1/26/18	02 VR	53- 62		571299	1/31/18	090-053-533.92-00	CONTRIBUTIONS & GRANTS	FEB CHILD/FAM/YOUTH	1,583.00
										VENDOR TOTAL	1,583.00 *
78120	URBANA NEIGHBORHOOD CONNECTION CENTER	1/26/18	02 VR	53- 61		571302	1/31/18	090-053-533.92-00	CONTRIBUTIONS & GRANTS	FEB COM STUDY CENTE	1,625.00
										VENDOR TOTAL	1,625.00 *
78888	VISA CARDMEMBER SERVICE - MENTAL HEALTH AC#4798510049573930	1/23/18	02 VR	53- 38		570971	1/25/18	090-053-522.44-00	EQUIPMENT LESS THAN \$50003930	DELL 12/29	807.99
		1/23/18	02 VR	53- 38		570971	1/25/18	090-053-522.44-00	EQUIPMENT LESS THAN \$50003930	DELL 12/30	832.49
		1/23/18	02 VR	53- 38		570971	1/25/18	090-053-533.95-00	CONFERENCES & TRAINING	3930 HOTL SNTAFE 1/	137.22
		1/23/18	02 VR	53- 38		570971	1/25/18	090-053-533.95-00	CONFERENCES & TRAINING	3930 GTU MEDICAL 1/	500.00
		1/23/18	02 VR	53- 38		570971	1/25/18	090-053-533.42-00	EQUIPMENT MAINTENANCE	3930 MICROSOFT 1/6	105.19
		1/23/18	91 VR	53- 475		570971	1/25/18	090-053-522.02-00	OFFICE SUPPLIES	3930 AMAZON 12/18	24.99-
		1/23/18	91 VR	53- 475		570971	1/25/18	090-053-522.44-00	EQUIPMENT LESS THAN \$50003930	DELL 12/22	31.88-
		1/23/18	91 VR	53- 475		570971	1/25/18	090-053-522.02-00	OFFICE SUPPLIES	3930 AMAZON 12/14	49.68
		1/23/18	91 VR	53- 475		570971	1/25/18	090-053-522.02-00	OFFICE SUPPLIES	3930 AMAZON 12/16	49.73
		1/23/18	91 VR	53- 475		570971	1/25/18	090-053-522.02-00	OFFICE SUPPLIES	3930 AMAZON 12/16	24.99
		1/23/18	91 VR	53- 475		570971	1/25/18	090-053-522.44-00	EQUIPMENT LESS THAN \$50003930	DELL 12/20	203.94
										VENDOR TOTAL	2,654.36 *
81610	XEROX CORPORATION	1/26/18	90 VR	53- 478		571323	1/31/18	090-053-533.85-00	PHOTOCOPY SERVICES	INV 152312515 1/6	246.29

77280  


CHAMPAIGN COUNTY

EXPENDITURE APPROVAL LIST

2/09/18

PAGE 7

VENDOR NO	VENDOR NAME	TRN DTE	B N CD	TR	TRANS NO	PO NO	CHECK NUMBER	CHECK DATE	ACCOUNT NUMBER	ACCOUNT DESCRIPTION	ITEM DESCRIPTION	EXPENDITURE AMOUNT
*** FUND NO. 090 MENTAL HEALTH												
		1/26/18	90 VR	53-	478		571323	1/31/18	090-053-533.85-00	PHOTOCOPY SERVICES	INV 152312516 1/6	39.60
											VENDOR TOTAL	285.89 *
602880	BRESSNER, BARBARA J.	1/26/18	02 VR	53-	63		571332	1/31/18	090-053-533.07-00	PROFESSIONAL SERVICES	FEB PROFESSIONAL FE	2,260.00
											VENDOR TOTAL	2,260.00 *
630360	MAYER, JAMES	1/26/18	02 VR	53-	64		571345	1/31/18	090-053-533.07-00	PROFESSIONAL SERVICES	FEB PROFESSIONAL FE	906.00
											VENDOR TOTAL	906.00 *
										MENTAL HEALTH BOARD	DEPARTMENT TOTAL	319,021.12 *
										MENTAL HEALTH	FUND TOTAL	319,021.12 *

10