



## Champaign County Mental Health Board

---

In fulfillment of our responsibilities under the Community Mental Health Act, the Champaign County Mental Health Board (CCMHB) presents the following documents for public review:

The CCMHB's Annual Report provides an accounting to the citizens of Champaign County of the CCMHB's activities and expenditures during the period of January 1, 2024 through December 31, 2024.

The CCMHB's Three-Year Plan for the period January 1, 2022 through December 31, 2025 presents the CCMHB's goals for development of Champaign County's system of community mental health, intellectual and developmental disabilities, and substance use disorder services and facilities, with One-Year Objectives for January 1, 2025 through December 31, 2025.

Any questions or comments regarding the CCMHB's activities or the county's behavioral health and developmental disability services can be directed to the Champaign County Mental Health Board; 1776 E. Washington; Urbana, IL 61802; phone (217) 367-5703, fax (217) 367-5741.

---



**Champaign County Mental Health Board**

**Fiscal Year 2024 Annual Report & Three-Year Plan 2022-2025**

**Table of Contents**

Board and Staff Listing	5
President's Report	7-8
Section I: Financial Reports and Service Data	9-32
Financial Report	11
IDD Special Initiatives Financial Report	12
Program Allocations	13-14
Service Categories	15
Utilization Summaries	16-29
Funding Distribution Charts	30
Service Demographics Charts	31
Section II: Three-Year Plan 2022-2025	32-47
Strategic Plan with FY25 Objectives	



# **LISTING OF 2024 BOARD MEMBERS AND STAFF**

## **BOARD MEMBERS**

Dr. Jon Paul Youakim, President (January 1 - June 30), Vice President (July 1 - December 31)

Ms. Molly McLay, Vice President (January 1 - June 30), President (July 1 - December 31)

Dr. Lisa Liggins-Chambers (January 1 - October 23)

Mr. Chris Miner

Mr. Anthony Nichols (from July 17)

Mr. Joseph Omo-Osagie

Ms. Elaine Palencia

Ms. Jane Sprandel

Ms. Jennifer Straub (January 1 - November 20)

## **STAFF MEMBERS**

Lynn Canfield  
Executive Director

Kim Bowdry  
Associate Director for Intellectual and Developmental Disabilities

Leon Bryson  
Associate Director for Mental Health & Substance Use Disorder Services

Stephanie Howard-Gallo  
Operations & Compliance Coordinator

Shandra Summerville  
Cultural & Linguistic Competence Coordinator

Chris Wilson  
Financial Manager



## CCMHB President's Report

As President of the Champaign County Mental Health Board (CCMHB), it is my pleasure to present our 2024 Annual Report. Per the Illinois Community Mental Health Act (405 ILCS 20/), this fulfills the annual financial reporting requirement, with accounting of the year's revenues and expenditures, amounts paid to agencies by program, and costs of the I/DD Special Initiatives, a collaboration with the Champaign County Board for Care of Persons with a Developmental Disability (CCDDDB). Descriptions of funded programs and utilization data are offered, with charts showing how financial resources were committed per sector, population, and service type. Closing out the Report is the Three-Year Plan with FY 2025 Objectives.

- From January through June, the second half of Program Year 2024 (July 1, 2023 to June 30, 2024) allocations were paid out. Applications for funding for Program Year 2025 (July 1, 2024 to June 30, 2025) were submitted in February and reviewed during the spring, with final allocation decisions made in May and June. The total of PY2025 awards was \$5,741,107. From July through December, the first half of these allocations was paid out.
- The Evaluation Capacity Building partnership with University of Illinois Family Resiliency Center continued into its second full year. The team presented their Group Level Assessment findings in January and began intensive support for three funded programs while developing tools for use by all and [posted here](https://www.familyresiliency.illinois.edu/resources/microlearning-videos) (<https://www.familyresiliency.illinois.edu/resources/microlearning-videos>.) They met with a working group of agency representatives every other week to discuss evaluation experiences and provide focus and content, and they hosted a workshop in the fall on identifying outcomes and using the online measures bank, [available here](https://uofi.app.box.com/s/jidv3wz8s5k8k0t9yh2puqvrsrfit85ka) (<https://uofi.app.box.com/s/jidv3wz8s5k8k0t9yh2puqvrsrfit85ka>.) Their microlearnings have been notably helpful and well-crafted. The impact of this project can be seen in agencies' year end outcome reports, [accessed here](https://www.champaigncountyil.gov/mhbddb/PDFS/CCMHB_PY24_Performance_Outcome_Reports.pdf) ([https://www.champaigncountyil.gov/mhbddb/PDFS/CCMHB\\_PY24\\_Performance\\_Outcome\\_Reports.pdf](https://www.champaigncountyil.gov/mhbddb/PDFS/CCMHB_PY24_Performance_Outcome_Reports.pdf).)
- During April, the CCMHB, along with its Alliance for Inclusion and Respect (AIR) partners, sponsored an anti-stigma film in the 25<sup>th</sup> annual Roger Ebert's Film Festival. Community members joined filmmaker and musician Kishi Bashi for a post-screening discussion of *Omoiyari: A Song Film*, which detailed the latter's journey to understand the impact of Japanese internment on the mental health of those whose loved ones lived that experience. The discussion was followed by Kishi Bashi and board member Joe Omo-Osagie improvising music together onstage for all to see. On the final day of the festival, AIR hosted an art show and sale, featuring original work by artists and entrepreneurs. More information is available on the AIR site, [linked here](https://champaigncountyair.com/) (<https://champaigncountyair.com/>.)

- On October 26, the 15th annual DISABILITY Resource Expo ([website linked here https://www.disabilityresourceexpo.org/](https://www.disabilityresourceexpo.org/)) took place at Marketplace Mall, with 73 registered exhibitors, 3 more who squeezed in during the event, and roughly 900 attendees. Nearly \$21,800 in cash and in-kind gifts were received, which is significantly more than the previous year! The Expo continues to be a community hub for linking persons with disabilities to healthcare and social services, resulting in a higher quality of life.

In 2024, the CCMHB welcomed Mr. Chris Miner, who in January stepped into the expired term previously held by Matthew Hausman. We also welcomed Mr. Anthony Nichols, who in July stepped into the unexpired term held by Dr. Daphne Maurer. In November, we expressed heartfelt appreciation to Dr. Lisa Liggins-Chambers, who stepped away from the board, and Ms. Jennifer Straub, whose county board term had ended and thus her time on our board as well. Their knowledge of mental health and broader social services, attention to the multifaceted needs of this community, and dedication to agencies, staff, board, and our county were tremendously valuable.

As we enter into 2025, some of the greatest federal cuts to mental health and substance use disorder services loom ahead, with current agencies already citing cancellations of grants that have been held for decades. Various groups in our community are at risk as well. It is now more important than ever for our local mental health service structure to be a strong safety net and a beacon of welcome—a reminder that all members of our community are valuable and deserving of support. Our board and staff remain steadfast in our determination and desire to serve. The CCMHB is dedicated to funding a comprehensive system of services and supports that ensure all community members have access to the least restrictive services to meet their needs.

It has been an honor to serve as your Board President. I look forward to continuing to work with each board member and staff member to better our processes and learn from each of you, as well as to center the community in the ways we steward this important resource.

Respectfully,

A handwritten signature in black ink, reading "Molly M. McLay". The signature is written in a cursive, flowing style.

Molly M. McLay  
CCMHB President



## SECTION I: Financial Reports and Service Data



# CHAMPAIGN COUNTY MENTAL HEALTH BOARD

## ANNUAL FINANCIAL REPORT

1/1/24 - 12/31/24

	2023	2024
Beginning of the Year Fund Balance	\$ 303,457	\$ 454,761
<b>REVENUE</b>		
General Property Taxes	\$ 5,937,146	\$ 6,304,478
Property Taxes - Back Tax	\$ -	\$ -
Payment in Lieu of Taxes	\$ 2,916	\$ 327
Mobile Home Tax	\$ 3,920	\$ 3,543
Local Government Revenue	\$ -	\$ -
Champ County Developmental Disabilities Board	\$ 389,194	\$ 386,077
Interest Earnings	\$ 99,693	\$ 97,730
Gifts and Donations	\$ 450	\$ 575
Disability Expo	\$ 12,202	\$ 14,015
Miscellaneous	\$ 9,856	\$ 5,652
<b>TOTAL REVENUE</b>	<b>\$ 6,455,376</b>	<b>\$ 6,812,397</b>
<b>EXPENDITURES</b>		
<b>Administration &amp; Operating Expenses:</b>		
Personnel	\$ 581,916	\$ 607,029
Commodities	\$ 19,409	\$ 18,887
Services	\$ 342,831	\$ 321,874
Interfund Transfers*	\$ 132,599	\$ 5,907
Capital Outlay	\$ -	\$ -
<b>Sub-Total</b>	<b>\$ 1,076,755</b>	<b>\$ 953,697</b>
<b>Grants and Contributions:</b>		
Program	\$ 5,227,318	\$ 5,855,312
Capital	\$ -	\$ -
<b>Sub-Total</b>	<b>\$ 5,227,318</b>	<b>\$ 5,855,312</b>
<b>TOTAL EXPENDITURES</b>	<b>\$ 6,304,073</b>	<b>\$ 6,809,009</b>
<b>Fund Balance at the End of the Fiscal Year</b>	<b>\$ 454,761</b>	<b>\$ 458,149</b>

\*to CCDDDB fund for share of revenue from Expo donations and miscellaneous

*As of April 7, 2025, FY2024 financial statements are unaudited.*

**I/DD SPECIAL INITIATIVES FUND**  
**ANNUAL FINANCIAL REPORT**

**1/1/24 - 12/31/24**

<b>REVENUE</b>	<b>2023</b>	<b>2024</b>
<b>From Mental Health Board</b>	\$ -	\$ -
<b>From Developmental Disabilities Board</b>	\$ -	\$ -
<b>Rent</b>	\$ -	\$ -
<b>Other Misc Revenue</b>	\$ 23,966	\$ 21,406
<b>Sale of Fixed Asset</b>	\$ -	\$ -
<b>TOTAL REVENUE</b>	<u>\$ 23,966</u>	<u>\$ 21,406</u>

**EXPENDITURES**

<b>Mortgage Principal</b>	\$ -	\$ -
<b>Mortgage Interest</b>	\$ -	\$ -
<b>Commodities</b>	\$ -	\$ -
<b>Professional Fees</b>	\$ -	\$ 1,420
<b>Utilities</b>	\$ -	\$ -
<b>Building/Landscaping Maintenance</b>	\$ -	\$ -
<b>Building Improvements</b>	\$ -	\$ -
<b>Contributions &amp; Grants</b>	\$ 142,998	\$ 220,646
<b>Other Services</b>	\$ -	\$ -
<b>TOTAL EXPENDITURES</b>	<u>\$ 142,998</u>	<u>\$ 222,066</u>

*As of April 7, 2025, FY2024 financial statements are unaudited.*

**CHAMPAIGN COUNTY MENTAL HEALTH BOARD  
PROGRAM ALLOCATIONS -- FY2024  
1/1/24 - 12/31/24**

AGENCY/PROGRAM	TOTAL PAID
<b>CHAMPAIGN COUNTY CHILDREN'S ADVOCACY CENTER</b>	
Children's Advocacy Center	63,911.00
<b>CHAMPAIGN COUNTY CHRISTIAN HEALTH CENTER</b>	
Mental Health Care	33,000.00
<b>CHAMPAIGN COUNTY HEALTH CARE CONSUMERS</b>	
CHW Outreach and Benefit Enrollment	86,501.00
Disability Services	98,250.00
Justice Involved CHW Services & Benefits	90,147.00
<b>Agency Total</b>	<b>274,898.00</b>
<b>CHAMPAIGN COUNTY REGIONAL PLANNING COMMISSION</b>	
Headstart - Early Childhood Mental Health Services (w DD amount**)	367,845.00
Homeless Services System Coordination	54,281.00
Youth Assessment Center	76,350.00
<b>Agency Total</b>	<b>498,476.00</b>
<b>COMMUNITY SERVICE CENTER OF NORTHERN CHAMPAIGN COUNTY</b>	
Resource Connection	68,609.00
<b>COURAGE CONNECTION</b>	
Courage Connection	110,516.00
<b>CRISIS NURSERY</b>	
Beyond Blue Champaign County	90,000.00
<b>C-U at Home</b>	
Shelter Case Management	256,700.00
<b>C-U EARLY</b>	
C-U Early (w DD amount)**	78,948.00
<b>CUNNINGHAM CHILDREN'S HOME</b>	
ECHO Housing and Employment Support	165,475.00
Families Stronger Together	340,114.00
<b>Agency Total</b>	<b>505,589.00</b>
<b>DEVELOPMENTAL SERVICES CENTER</b>	
Family Development **	656,174.00
<b>DON MOYER BOYS &amp; GIRLS CLUB</b>	
CUNC (6 months)	55,004.00
Community Coalition Summer Youth Programs	100,000.00
CU Change	54,668.00
Youth and Family Services (6 months)	80,002.00
<b>Agency Total</b>	<b>289,674.00</b>
<b>EAST CENTRAL ILLINOIS REFUGEE ASSISTANCE CENTER</b>	
Family Support and Strengthening	62,000.00
<b>FAMILY SERVICE</b>	
Counseling	30,000.00
Self Help Center	28,676.00

**CHAMPAIGN COUNTY MENTAL HEALTH BOARD**  
**PROGRAM ALLOCATIONS -- FY2024**  
**1/1/24 - 12/31/24**

AGENCY/PROGRAM	TOTAL PAID
Senior Counseling and Advocacy	178,386.00
<b>Agency Total</b>	<b>237,062.00</b>
<b>FIRST FOLLOWERS</b>	
FirstSteps Community Re-Entry House	54,500.00
Peer Mentoring for Re-entry	95,000.00
<b>Agency Total</b>	<b>149,500.00</b>
<b>GREATER COMMUNITY AIDS PROJECT OF EAST CENTRAL ILLINOIS</b>	
Advocacy, Care, and Education Services (6 months)	30,780.00
<b>GROW IN ILLINOIS</b>	
Peer Support	143,635.00
<b>IMMIGRANT SERVICES OF C-U</b>	
Immigrant Mental Health (6 months)	45,000.00
<b>PROMISE HEALTHCARE</b>	
Mental Health Services with Promise	330,000.00
Promise Healthcare Wellness	107,078.00
<b>Agency Total</b>	<b>437,078.00</b>
<b>RAPE ADVOCACY COUNSELING EDUCATION SERVICES</b>	
Sexual Trauma Therapy Services	140,000.00
Sexual Violence Prevention Education	75,000.00
<b>Agency Total</b>	<b>215,000.00</b>
<b>ROSECRANCE CENTRAL ILLINOIS</b>	
Benefits Case Management	82,611.00
Child & Family Services	75,336.00
Criminal Justice PSC	328,004.00
Crisis Co-Response Team	258,972.00
Recovery Home	100,000.00
Specialty Courts	197,285.00
<b>Agency Total</b>	<b>1,042,208.00</b>
<b>TERRAPIN STATION SOBER LIVING</b>	
Recovery Home	84,279.00
<b>UP CENTER OF CHAMPAIGN COUNTY (UNITING PRIDE)</b>	
Children, Youth, and Families Program	190,056.00
<b>WIN RECOVERY</b>	
Re-Entry & Recovery Home	146,504.00
<b>GRAND TOTAL</b>	<b>5,709,597.00</b>

\*\* Programs for people with I/DD, per Intergovernmental Agreement with the Champaign County Developmental Disabilities Board  
*As of March 29, 2024, FY2023 financial statements are unaudited.*

## **Service Totals – Brief Narrative of What the Service Categories Represent**

The Champaign County Mental Health Board funds a wide range of services through local human service providers of varying size and sophistication. The CCMHB invests in services that range from helping mothers and families with newborn babies into early childhood to supporting youth through adolescence and young adulthood to assisting adults and families dealing with life's challenges to helping the elderly with activities of daily living. The not for profit and government agencies that provide services with CCMHB funds range from small agencies with only a few employees and volunteers to large multi-million dollar agencies with over a hundred employees. Descriptions of the service activities supported in current and previous years are available at <http://www.co.champaign.il.us/MHBDDDB/PublicDocuments.php> and <http://ccmhddbrds.org>.

Regardless of their size, agencies are required to report on services delivered using four categories. Those categories must be broad enough to provide a certain amount of flexibility to account for how and to whom the programs delivered services.

The four categories are Community Service Event (CSE), Service Contact (SC), Non-Treatment Plan Client (NTPC), and Treatment Plan Client (TPC). Each agency identifies, within each broadly defined category, what will be reported. Definitions of CSEs and SCs relate to types of activities. Definitions of TPCs and NTPCs relate to who has been served and require a certain level of documentation associated with the service. Some programs may only report under one of the categories, others may report on all four. Which and how many categories an agency reports activity under depends on the services provided by the program.

**Community Service Events (CSEs)** can be public events, work associated with a news interview or newspaper article, consultations with community groups and caregivers, classroom presentations, and small group workshops and training to promote a program or educate the community. Meetings directly related to planning such events may also be counted here.

*Examples: Family Service Self-Help Center planning and hosting of a biannual self-help conference; newsletters published by the East Central Illinois Refugee Mutual Assistance Center.*

**A Service Contact (SC)**, also referred to as a screening contact or service encounter, represents the number of times a program has contact with consumers. Sometimes this can be on behalf of someone who is being served by the program. Or it can be sharing of information, fielding a call about services, or doing an initial screenings or assessment.

**A Non-Treatment Plan Client (NTPC)** is someone for whom services are provided and a record of the service exists but an individualized treatment plan has not been necessary or one was initiated but does completed.

*Example: a person who comes into the domestic violence shelter at Courage Connection but leaves within a few days before fully engaging in services.*

**A Treatment Plan Client (TPC)** has traditionally meant people engaged in services where an assessment and treatment plan have been completed and case records are maintained. This applies to agencies such as Promise Healthcare, Rosecrance, and others. It can also represent an individual receiving a higher level of care within the spectrum of services provided within a program.

# Utilization Summaries for PY2024

## Champaign County Mental Health Board

### Funded Programs

TPC = Treatment Plan Client  
NTPC = Non-Treatment Plan Client  
CSE = Community Service Event  
SC = Screening Contact or Service Contact  
Other = as defined in individual program contract

*Many of the contract award amounts listed are not equal to actual cost of the program, as agencies are completing independent audit reports, which will be used to determine any excess revenue to be returned; excess revenue often results from understaffing, one cause of underutilization. These may result in future revisions to this report.*

*Detail on each program's performance toward defined consumer outcomes during the contract period, July 1, 2023 to June 30, 2024, is available at <http://ccmhddbrds.org>, among downloadable public files toward the bottom of the page and titled "**CCMHB PY24 Performance Outcome Reports**." It is also posted on our section of the County website, [Public Documents Page](#), under [the same name](#).*

---

***Priority: Collaboration with Champaign County Developmental Disabilities Board (CCDDb), Very Young Children and their Families***

---

#### ***Champaign County Regional Planning Commission Head Start/Early Head Start Early Childhood Mental Health Services \$149,666 (for I/DD Services)***

Social Skills & Prevention Coaches: collaborate with parents and Head Start staff to identify social-emotional strengths and areas of need for children; review and monitor developmental screenings for all students enrolled in HS/EHS; assist teaching staff and parents in writing individualized social-emotional goals and action plans; support staff and parents in identifying individualized inter/intra-personal goals and action plans and in reflection around inter/intra-personal skills used with children to improve co-regulation, attunement, empathy, and compassionate limit setting; collaborate with stakeholders to develop Support Plans for children who engage in challenging behaviors to communicate their needs; facilitate workshops, support groups, and coaching for staff and parents on social-emotional development, compassionate caregiving, stress-management, functional behavior assessments, trauma-informed practices/leadership, and cultural competency; support staff in monitoring children's progress and outcomes; offer parenting consultation and coaching through Facebook groups and Zoom meetings; review developmental screenings and make recommendations regarding referrals, goals, services; create unique virtual stress management and equity-related content for local residents in



collaboration with CU TRI. (\$197,569 of the total contract is for Mental Health services, the remainder is \$149,666 for I/DD.)

**Utilization targets:** 80 TPC, 380 NTPC, 5 CSE, 3,000 SC, 12 Other (workshops, trainings, professional development efforts with staff and parents).

**Utilization actual:** 168 TPC, 318 NTPC, 6 CSE, 1,887 SC, 35 Other (workshops, trainings, professional development efforts with staff and parents).

#### *CU Early*

##### **CU Early - NEW \$4,043 (for I/DD Services)**

Supports a bilingual home visitor within home visiting program that serves at-risk children birth-to-3 and their families, focus on pregnant and parenting teens, at-risk families, and linguistically isolated families. Supports at-risk families of infants and toddlers in their efforts as their child's first teacher, to build a strong foundation for learning within enrolled families, and to assist parents in preparing their children for success in kindergarten and beyond. Program uses Baby TALK model/curriculum and is Baby TALK Quality Certified. Seeks to ensure families receive adequate prenatal and well-baby health care, complete their education, and have the resources and skills to foster the optimal development of their child. (\$73,141 of the total contract relates to mental health, another \$4,043 to I/DD.)

**Utilization targets:** 23 TPC, 5 NTPC, 5 CSE, 506 SC

**Utilization actual:** 30 TPC, 5 NTPC, 11 CSE, 410 SC

#### *DSC*

##### **Family Development \$656,174**

Serves children birth to five years, with or at risk of developmental disabilities and their families. Responds to needs with culturally responsive, innovative, evidence-based services. Early detection and prompt, appropriate intervention can improve developmental outcomes for children with delays and disabilities and children living in at-risk environments. Family-centered intervention maximizes the gifts and capacities of families to provide responsive intervention within familiar routines and environments.

**Utilization targets:** 655 TPC, 200 SC, 15 CSE

**Utilization actual:** 830 TPC, 289 SC, 24 CSE

---

#### ***Priority: Thriving Children, Youth, and Families***

---

#### *Champaign County RPC Head Start/Early Head Start*

##### **Early Childhood Mental Health Services \$197,569 (for MH Services)**

*See above for service information and year-end data, disability types combined.*

#### *CU Early*

##### **CU Early - NEW \$73,141 (for MH Services)**

*See above for service information and year-end data.*

*Crisis Nursery*

**Beyond Blue – Champaign County \$90,000**

Supports mothers experiencing perinatal depression, with a focus on the mental health and well-being of children and families, by strengthening the parent child bond through playgroups, support groups, and home visiting services. Through coordination with the Home Visitors Consortium, Crisis Nursery focuses on families who are identified as experiencing perinatal depression and then blends this programming with our Prevention Initiative funding through the Illinois State Board of Education which focuses on the development of children birth-3 years.

**Utilization targets:** 30 TPC, 70 NTPC, 380 SC, 86 CSE, 925 Other (hours of in-kind/respice care)

**Utilization actual:** 23 TPC, 40 NTPC, 262 SC, 146 CSE, 696.5 Other

*Cunningham Children's Home*

**Families Stronger Together \$398,092**

Provides voluntary trauma-informed, culturally responsive, therapeutic services for families and youth ages 8 through 17 who have entered, or are at risk of entering the juvenile justice system. FST utilizes the use of the Attachment, Regulation, and Competency (ARC) framework to promote resiliency as it is designed to strengthen the trauma-informed caregiving skills of caregivers. The ARC framework is adaptable to a variety of settings such as schools, afterschool programs, and community centers. The FST program helps youth and their families understand the impact that past experiences of trauma have had on their current level of functioning and/or behaviors that have brought them to the attention of the juvenile justice system.

**Utilization targets:** 50 TPC, 25 NTPC, 1050 SC, 10 CSE

**Utilization actual:** 41 TPC, 158 NTPC, 1894 SC, 7 CSE

*Don Moyer Boys & Girls Club*

**CU Change \$75,000**

Seeks to impact underresourced youth with potential for high school graduation by providing group and individual support, counseling, life skills training, and exposure to positive cultural and healthy life choices. Emphasizes academic support, community and positive peer engagement, hands on learning experiences with a plan for the future.

**Utilization targets:** 20 TPC, 20 NTPC, 300 SC, 40 CSE

**Utilization actual:** 17 TPC, 21 NTPC, 279 SC, 77 CSE

*Don Moyer Boys & Girls Club*

**CUNC \$110,000**

Culturally-based and peer-based trauma-informed interventions, wellness and resilience building activities: GRITT, Stress Less, the S.E.L.F. Curriculum, Start 2 Heal, Skills for Psychological Recovery, and other evidence-based/informed interventions in groups and individual settings for those experiencing gun violence, chronic stress, adversity, or with emotional regulation needs.

Accomplished through training community members, focusing on youth leaders

and elder helpers, and educating the community about trauma and trauma-informed care.

**Utilization targets:** 115 NTPC, 55 SC, 141 CSE

**Utilization actual:** 186 NTPC, 449 SC, 126 CSE, 1 TPC

*Don Moyer Boys & Girls Club*

**Community Coalition Summer Initiatives \$90,000**

Supports youth and community mental health needs during critical out-of-school time over the summer months, when a lack of services is prevalent. Focused on violence prevention, enhancement of positive community engagement, academic enrichment, recreational activities, arts exploration, and leadership skill building. Services and supports by specialized providers, through subcontracts with Don Moyer Boys and Girls Club. The Champaign County Community Coalition and DMBGC support and reinforce System of Care principles and values, particularly relative to system-involved youth impacted with emotional and environmental challenges. Reports to and through the Champaign County Community Coalition and the CCMHB.

**Utilization targets:** 14000 SC, 900 NTPC, 40 CSE, 500 Other

**Utilization actual:** 11400 SC, 870 NTPC, 32 CSE, 300 Other

*Don Moyer Boys & Girls Club*

**Youth and Family Services \$160,000**

Serves parents/caregivers of youth who: have been clinically diagnosed; are experiencing social, emotional, and/or behavioral health challenges; have been impacted or have a history of trauma; are involved in the juvenile justice, mental health, education or child welfare system. Supports are offered at home, in school, and in the community for optimal recovery. Parents/caregivers are partnered with a peer who has successfully navigated multiple child-serving systems.

**Utilization targets:** 25 TPC, 20 NTPC, 400 SC, 10 CSE

**Utilization actual:** 7 TPC, 8 NTPC, 276 SC, 38 CSE

*East Central IL Refugee Mutual Assistance Center*

**Family Support and Strengthening \$62,000**

Supports and strengthens refugee and immigrant families transitioning and adjusting to American culture and expectations in Champaign County. Staff speak over ten languages in house, with other languages available through qualified translators... offers a connection to area resources that is culturally and linguistically appropriate. Staff often accompany clients on appointments as advisors and trusted advocates. The goal is to give low-income immigrants better access to quality care and services, leading to thriving families and client self-sufficiency.

**Utilization targets:** 60 TPC, 2140 NTPC, 50 CSE, 2200 SC, 15 Other (hours of workshops)

**Utilization actual:** 73 TPC, 7,820 NTPC, 82 CSE, 7,893 SC, 4 Other

*Rosecrance Central Illinois*

**Child & Family Services \$73,500**

For Champaign County residents aged 5 to 17 (and their families) with MH disorder and a need for counseling, transportation, case management, wellness, and psychiatric services supported by a licensed nurse who provides medication education, health and wellness promotion, and care coordination; multi-disciplinary team and coordination between psychiatrist and clinician; individual, group, or family counseling sessions, using skill-building, psychoeducation, Cognitive Behavior Therapy, and Play Therapy; and transportation.

**Utilization targets:** 30 TPC, 10 NTPC, 250 SC, 5 CSE

**Utilization actual:** 59 TPC, 3 NTPC, 917 SC, 6 CSE

*UP Center (Uniting Pride) of Champaign County*

**Children, Youth & Families Program \$190,056**

Uniting Pride (UP) works to create a county inclusive of LGBTQ+ children, youth, adults, and families by providing programming and support across the lifespan. UP assists individuals dealing with depression, anxiety, substance use, suicidal ideation. Support groups meet in-person and/or on Zoom depending on participant preferences. UP provide trainings to organizations, agencies, schools to build inclusive communities accepting of LGBTQ+ members. UP has launched a food pantry, increased free gender-affirming clothing program, and greatly expanded online resources.

**Utilization targets:** 100 NTPC, 300 SC, 100 CSE

**Utilization actual:** 358 NTPC, 871 SC, 390 CSE

---

***Priority: Safety and Crisis Stabilization***

---

*CU at Home*

**Shelter Case Management \$256,700**

Mid-Barrier Shelter Program: provides for a client's essential needs, with services in a 24/7, non-congregate, trauma-informed environment; clients can participate for 12-18 months; intensive case management which employs client-centered, trauma-informed principles that assist in goal development to move clients toward stability; group activities; linkage to outside resources to develop a community network of assistance. Advanced Shelter: for clients who are either coming out of substance abuse treatment, are involved with Drug Court, or who have graduated from the Mid-Barrier program; services in a trauma informed, non-congregate setting; case management services to assist clients in developing case plans for stabilization.

**Utilization targets:** 55 TPC, 25 NTPC, 5500 SC, 50 CSE

**Utilization actual:** 61 TPC, 24 NTPC, 3,494 SC, 59 CSE

*Champaign County Health Care Consumers*

**Justice Involved CHW Services & Benefits \$90,147**

For people who have justice-involvement, Community Health Worker services area offered at the Champaign County jail and in community. Works with individuals experiencing behavioral health issues, helping them enroll in health insurance, food stamps, and other public benefits programs; helps stabilize individuals with resources and benefits; and helps them navigate the health care system to get their needs met.

**Utilization targets:** 75 TPC, 25 NTPC, 200 SC, 8 CSE, 10 Other (Rx fund)

**Utilization actual:** 104 TPC, 30 NTPC, 196 SC, 22 CSE, 12 Other (Rx fund)

*Champaign County Regional Planning Commission – Community Services***Youth Assessment Center (YAC) \$76,350**

Early intervention and diversion for youth, particularly minority males, who are overrepresented in the juvenile justice system, and for youth whose behavior may be symptomatic of issues best served outside the juvenile justice system. Screens for needs, risks, and protective factors; uses Balanced and Restorative Justice (BARJ) approach; completes and reviews Station Adjustment as the working plan; may include weekly check-ins with case manager, curfew checks with police officer, reparation through written apology, community service hours, and linkage to social service, MH, or SUD treatment. Screening scores determine access to weekly phone counseling, group programming (CBT approach), and partnership with UIUC Psychological Services Center/Childhood Adversity & Resiliency Services to reduce barriers to MH treatment.

**Utilization targets:** 100 TPC, 150 NTPC, 60 SC, 70 CSE, 25 Other (1<sup>st</sup> time refer)

**Utilization actual:** 113 TPC, 30 NTPC, 109 SC, 69 CSE, 53 Other (1<sup>st</sup> time refer)

*FirstFollowers***FirstSteps Community Reentry House \$39,500**

A transition house for men returning home to Champaign County after incarceration. Rent-free housing in a five-bedroom house donated for use by the Housing Authority of Champaign County, for up to four men at a time. Provide furniture, appliances, computers, kitchen equipment, exercise equipment, some basic clothing items, food until the person has the means to pay for their own either through employment or Link Card. Staff assist residents in transition, help them set up plans of action and goals, provide transportation to potential employment or service opportunities, and facilitate their integration into the community. Projected length of engagement is 3-12 months.

**Utilization targets:** 8 TPC, 75 NTPC, 8 SC, 8 CSE

**Utilization actual:** 15 TPC, 68 NTPC, 18 SC, 12 CSE

*First Followers***Peer Mentoring for Re-entry \$95,000**

Formerly incarcerated individuals serve as peer mentors of the program as well as providing direct support to clients. Provides counseling and social/emotional

supports, workforce development programs, housing, assistance in accessing photo IDs and transportation, and more.

**Utilization targets:** 47 TPC, 140 NTPC, 18 SC, 20 CSE

**Utilization actual:** 46 TPC, 152 NTPC, 43 SC, 19 CSE

*Rosecrance Central Illinois*

**Criminal Justice PSC** \$320,000

Community-based behavioral health program aims to reduce reliance on institutional care, with qualified professionals meeting those involved with the criminal justice system where they are—in the Champaign County jail, at probation, or in the community. Using a person-centered, client-driven plan, the staff coordinates across systems, with and on behalf of people with justice system involvement. Case managers conduct screening, assessment, case management, and group therapy while individuals are in jail and help with the transition from incarceration to re-entry into the community.

**Utilization targets:** 60 TPC, 100 NTPC, 500 SC

**Utilization actual:** 28 TPC, 290 NTPC, 432 SC

*Rosecrance Central Illinois*

**Crisis Co-Response (CCRT)** \$207,948

Responds to need for behavioral health support in Rantoul and northern Champaign County and aims to reduce the number of repeat calls to law enforcement for social emotional behavioral (SEB) needs by increasing available services, eliminating barriers to existing services, and increasing individual's capacity to engage in treatment, while offering law enforcement an alternative to formal processing.

**Utilization targets:** 70 TPC, 10 NTPC, 250 SC, 50 CSE

**Utilization actual:** 117 TPC, 21 NTPC, 481 SC, 71 CSE

*Rosecrance Central Illinois*

**Specialty Courts** \$178,000

Specialty Courts (Drug Court) coordinates across systems, with and on behalf of people with substance use disorders or mental illness who have justice system involvement. Clinicians provide Specialty Court clients behavioral health assessments, individualized treatment plans, group, and individual counseling services. Case manager provides intensive case management to help clients overcome barriers and connect to mental health treatment and resources such as food, clothing, medical and dental services, employment, housing, education, transportation, and childcare.

**Utilization targets:** 45 TPC, 800 SC, 4 CSE, 1,000 Other = # hours case management, # hours counseling. Other represents services funded by other sources leveraged through CCMHB support for non-billable activities crucial to the operation of the Specialty Court

**Utilization actual:** 34 TPC, 1439 SC, 7 CSE, Other 315 (hours assessment, hours case management, and hours counseling)

### *Women in Need (WIN) Recovery*

#### **Re-Entry & Recovery Home \$110,000**

Gender-responsive, trauma-informed, health-promoting services for women and gender minorities, as an alternative to incarceration upon reentry. Service navigation and assistance to meet individualized self-identified needs that may include housing, case management, support plan with self-identified goals and assessments of progress, physical/mental/emotional health care services, substance misuse/trauma recovery, education, employment, legal assistance, leadership training, peer-facilitated support groups, civic participation/community outreach, family therapy/reunification, compliance with parole/probation/DCFS/other, and recovery-based programming. All residents are provided curriculum books for trauma, parenting, and recovery classes.

**Utilization targets:** 7 CSE, 40 SC, 25 NTPC, 15 TPC

**Utilization actual:** 15 CSE, 73 SC, 3 NTPC, 23 TPC

---

### ***Priority: Healing from Interpersonal Violence***

---

### *Champaign County Children's Advocacy Center (CAC)*

#### **Children's Advocacy \$63,911**

Using a child-centered, evidence-based, coordinated response to allegations of child sexual abuse and serious physical abuse, the CAC promotes healing and justice for young victims through: a family-friendly space for initial interview and parent meeting; a legally-sound, developmentally appropriate child forensic interview; comprehensive case management provided by the CAC Family Advocate to help the family navigate the crisis; crisis counseling to the child and any non-offending family member; referrals to specialized medical services; and coordination of the investigation through multidisciplinary case reviews.

**Utilization targets:** 130 TPC, 40 NTPC, 170 SC, 8 CSE

**Utilization actual:** 222 TPC, 49 NTPC, 182 SC, 8 CSE

### *Courage Connection*

#### **Courage Connection \$127,000 (Amended to \$110,000)**

Provides services to all victims/survivors of domestic violence regardless of gender, immigration status, race, national origin, age, sexuality, or any other identifying factor. Eligibility is established based on self-report of domestic violence; there are no other barriers to receiving access to services. Helps victims and survivors of domestic violence rebuild their lives through advocacy, housing, counseling, court advocacy, self-empowerment, community engagement, and community collaborations.

**Utilization targets:** 750 TPC, 200 NTPC, 700 SC, 150 CSE

**Utilization actual:** 560 TPC, 144 NTPC, 704 SC, 216 CSE

### *Rape Advocacy, Counseling & Education Services*

**Sexual Trauma Therapy Services - NEW \$140,000**

Improves the health and success of survivors by providing confidential trauma therapy and crisis intervention services to survivors of sexual violence and stalking. Therapy services at RACES are part of the agency's Survivor Services Program. Master's level clinicians provide trauma-informed, culturally competent therapy through multiple treatment modalities, utilizing approaches that best meet the goals and the needs identified by clients. Cognitive-behavioral therapy, EMDR, and arts-based therapy, provided by five full-time staff members based out of the agency's office in Urbana and a contractual therapist with office in Rantoul (established to increase access to therapy services for survivors in Rantoul and surrounding rural areas.)

**Utilization targets:** 170 TPC, 250 NTPC, 25 SC, 2 CSE, 2 Other (JDC presentations)

**Utilization actual:** 37 TPC, 108 NTPC, 58 (# attending) SC, 9 CSE, 5 Other

***Rape Advocacy, Counseling & Education Services*****Sexual Violence Prevention Education \$75,000**

Services for residents of Champaign County aged three and older, at no cost. Uses a comprehensive, multi-level, evidence-informed strategy to provide age-appropriate programming to students, parents, teachers, and other community members. Special attention is given to ensuring the inclusion of historically underserved and marginalized communities, including racial and ethnic minorities, rural residents, members of the LGBTQ+ community, and individuals with disabilities. The most common locations for RACES prevention programming are K-12 schools.

**Utilization targets:** 4000 (# attending) SC, 600 CSE, 40 Other (JDC presentations)

**Utilization actual:** 7,040 (# attending) SC, 1,086 CSE, 29 Other

---

***Priority: Closing the Gaps in Access and Care***

---

***Champaign County Christian Health Center*****Mental Health Care at CCCHC \$33,000**

Offers mental health care by mental health practitioners, along with primary care providers who also treat or refer those with various mental health conditions, especially anxiety and depression. A psychiatrist provides direct mental health care to patients; mental health patients receive mental health screenings, primary care, prescriptions, and referrals to specialized care as needed. Provided to any uninsured and underinsured resident of Champaign County, typically between the ages of 18 and 64 (as those under 18 and over 64 generally have some form of health care coverage).

**Utilization targets:** 200 TPC, 500 NTPC, 800 SC, 8 CSE, 100 Other

**Utilization actual:** 62 TPC, 1,147 NTPC, 666 SC, 13 CSE, 147 Other



*Champaign County Health Care Consumers*

**CHW Outreach & Benefit Enrollment \$86,501**

Works with individuals experiencing behavioral health issues, helping them enroll in health insurance, food stamps, and other public benefits programs. Community Health Workers help stabilize individuals with resources and benefits and navigating the health care system to get their needs met... establishes trust with clients by helping them gain and maintain access to many needed benefits, provides emotional support and helps them identify the types of services that they need in a non-stigmatizing and supportive way.

**Utilization targets:** 160 TPC, 25 NTPC, 780 SC, 8 CSE, 6 Other (Rx fund)

**Utilization actual:** 151 TPC, 27 NTPC, 702 SC, 18 CSE, 13 Other (Rx fund)

*Champaign County Health Care Consumers*

**Disability Application Services \$91,500**

Evaluations of disabling conditions and determinations of whether to apply for SSI or SSDI or both (depending on client's work history); assistance applying for and appealing adverse decisions; coordinating with attorney, if necessary to appeal decisions; emotional/psychological support for individuals applying. Often, the decision to apply for disability, and the process of doing so, can be challenging to the individual as they must come to terms with the idea that they are "disabled." Additional services to be provided to help facilitate approval for SSI/SSDI include helping clients to access various health services to document their disabling conditions.

**Utilization targets:** 37 TPC, 5 NTPC, 700 SC, 4 CSE, 8 Other (Rx fund)

**Utilization actual:** 72 TPC, 17 NTPC, 1,329 SC, 15 CSE, 33 Other (Rx fund)

*Champaign County Regional Planning Commission – Community Services*

**Homeless Services System Coordination \$54,281**

Supports, facilitates, and directs the IL-503 Continuum of Care (CoC) aka Champaign County Continuum of Service Providers to the Homeless; supports the body's mission to end homelessness in Champaign County through a coordinated network of resources for those who are homeless or at-risk of becoming homeless; coordinates efforts across the CoC membership to support its goals and the Homeless Emergency and Rapid Transition to Housing (HEARTH) Act regulations; and builds and maintains collaborative partnerships with members and affiliates, working closely with the Executive Committee.

**Utilization targets:** 50 TPC, 40 SC, 26 CSE

**Utilization actual:** 70 TPC, 201 SC, 41 CSE

*Community Service Center of Northern Champaign County*

**Resource Connection \$68,609**

A multi-service program aimed at assisting residents of northern Champaign County with basic needs and connecting them with mental health and other social services. Serves as a satellite site for various human service agencies providing mental health, physical health, energy assistance, and related social

services. Features an emergency food pantry, prescription assistance, clothing and shelter coordination, and similar services for over 1,700 households in northern Champaign County.

**Utilization targets:** 1100 NTPC, 3500 SC, 2100 Other (contacts with other agencies using CSCNCC as a satellite site), 0 CSE

**Utilization actual:** 1525 NTPC, 3,107 SC, 990 Other, 6 CSE

#### *Cunningham Children's Home*

##### **ECHO Housing and Employment Support \$127,249**

Provides comprehensive housing, employment, and life skills development to individuals who are homeless or at risk of homelessness, with the goal of providing resources that support independence. Services are provided in the home, community, or office with most services provided in community settings.

**Utilization targets:** 20 TPC, 15 NTPC, 510 SC, 25 CSE

**Utilization actual:** 26 TPC, 7 NTPC, 868 SC, 63 CSE

#### *Family Service of Champaign County*

##### **Counseling \$30,000**

Affordable, accessible counseling services to families, couples and people of all ages. Serves Drug Court clients and participates in Specialty Courts collaboration. Clients are given tools and supports to successfully deal with life challenges such as divorce, marital and parent/child conflict, depression, anger management, anxiety, abuse, substance abuse/dependency and trauma. Strength-based, client-driven services utilize family and other natural support systems and are respectful of the client's values, beliefs, traditions, customs, and personal preferences. Clients can be as young as 5.

**Utilization targets:** 40 TPC, 20 NTPC

**Utilization actual:** 10 TPC, 20 NTPC

#### *Family Service of Champaign County*

##### **Self-Help Center \$28,430**

Information about and referral to local support groups. Provides assistance to develop new support groups and maintaining and strengthening existing groups. Program maintains a database of Champaign County support groups, national groups, and groups in formation. Information is available online and in printed directory and specialized support group listings. Provides consultation services, workshops, conferences, educational packets and maintains a lending library of resource materials.

**Utilization target:** 270 CSE

**Utilization actual:** 229 CSE

#### *Family Service of Champaign County*

##### **Senior Counseling & Advocacy \$178,386**

Caseworkers assist with needs and challenges faced by seniors (60 or older) with multiple needs in terms of their emotional and/or physical health, as well as their requesting assistance in completing numerous applications and contacts with various safety net programs and service providers. Services are provided

over the phone, Zoom meetings, in the home or in the community. (Incorporates a program separately funded the previous year, for creative project support.)

**Utilization targets:** 325 TPC, 700 NTPC, 2900 SC, 4 CSE, 2500 Other

**Utilization actual:** 315 TPC, 287 NTPC, 2624 SC, 5 CSE, 1,306 Other

### *GROW in Illinois*

#### **Peer Support \$129,583**

A peer support group assisting with personal recovery and mental health of individual sufferers which may include addictions. Through leadership and community building, individuals attending weekly group meetings are given the tools and support to help them in their recovery and personal growth. Weekly group meetings / Organizer and Recorder meetings, Leaders meetings, and a monthly socials. Groups (3 to 15 members) include in-person as well as virtual sessions for men and for women, and are held in various locations around the County, including the Champaign County Jail.

**Utilization targets:** 150 NTPC, 1800 SC, 24 CSE

**Utilization actual:** 398 NTPC, 2,484 SC, 26 CSE

### *Immigrant Services of CU*

#### **Immigrant Mental Health Program - NEW \$90,000**

Provides tele-mental health counseling, individual in-person counseling, small group therapy, forensic MH evaluations for asylum seekers, Living Room for walk-in consultations with social work team, eligibility assessment, selection of culturally appropriate providers, support to counseling (transportation and phone reminders), and help identifying other appropriate resources. Individuals engage in 5-6 sessions, followed by consultation on further steps. Core staff are supported by an internship program with UIUC School of Social Work (part time) and ISCU VISTA Family Assistance Coordinator (full time). Both of these staff members are bilingual and native Spanish speakers.

**Utilization targets:** 60 TPC, 130 NTPC, 32 SC, 8 CSE,

**Utilization actual:** 234TPC, 738 NTPC, 457 SC, 8 CSE

### *Promise Healthcare*

#### **Mental Health Services with Promise \$330,000**

On-site mental health services to achieve the integration of medical and behavioral health care as supported by both the National Council for Community Behavioral Healthcare and the National Association of Community Health Centers. Mental health and medical providers collaborate, make referrals, and even walk a patient down the hall to meet with a therapist. Patients receive MH treatment through counselor, psychiatrist or primary care provider. Counseling and psychiatry are available to patients at Frances Nelson, Promise Healthcare, Promise Urbana School Health Center, and by appointment with Dr. Chopra.

**Counseling Utilization targets:** 400 TPC, 400 NTPC, 2700 SC, 2 CSE

**Counseling Utilization actual:** 1,032 TPC, 431 NTPC, 3,739 SC

**Psychiatric Utilization targets:** 1,000 TPC, 900 NTPC receiving psych meds through primary care, 2700 SC psychiatric service encounters, 2 CSE lunch and learn sessions

**Psychiatric Utilization actual:** 3,107 TPC, 1,207 NTPC, 7,676 psychiatric service encounters, 3 CSE lunch and learn sessions, 40% Other (claims denial rate).

*Promise Healthcare*

**Promise Healthcare Wellness \$107,987**

Case Managers and Community Health Workers provide assistance to patients to address barriers to care, access to transportation, Medicaid and Marketplace insurance enrollment, Promise Sliding Fee Scale enrollment, SNAP enrollment, and enrollment in Medication Assistance Programs. The project will also establish a process for incoming referrals for behavioral health services and enabling services. Staff will assess patient need for enabling services and assist individuals in accessing behavioral health services.

**Utilization targets:** 200 TPC, 400 NTPC, 1600 SC, 30 CSE, 1900 Other (Utilizing a Social Determinant of Health screening tool (PRAPARE)).

**Utilization actual:** 387 TPC, 1,862 NTPC, 2,939 SC, 72 CSE, 846 Other

*Rosecrance Central Illinois*

**Benefits Case Management \$80,595**

Benefits Case Manager assists clients with benefits enrollment, outreach and education, benefits counseling, and assistance with obtaining myriad resources available to behavioral health client. The program aims to help clients obtain the benefits necessary to receive coverage for behavioral health and medical services, as well as other public benefit programs. May also assist clients with access to housing, employment, healthy food, and other resources.

**Utilization targets:** 600 SC, 250 NTPC

**Utilization actual:** 465 SC, 129 NTPC

*Rosecrance Central Illinois*

**Recovery Home \$100,000**

An alcohol and drug-free environment that provides individuals a safe, supportive living environment. Individuals go through a peer support recovery program while developing independent living skills in a community setting. Staff assist clients in addressing “problems in living” and the social determinants of health. The recovery home model demonstrates efficacy in mitigating risk of relapse and decreasing psychiatric symptoms when involved in 12-Step recovery and developing social supports.

**Utilization targets:** 22 TPC, 65 SC

**Utilization actual:** 17 TPC, 53 SC

*Terrapin Station Sober Living, Inc.*

**Recovery Home \$79,677**

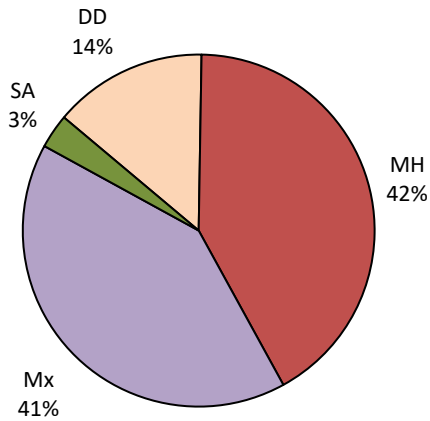
Provides equitable housing for dual diagnosis persons in recovery from drug addiction, homelessness, and the justice system, in a manner that is forward-thinking and original. Intensive individualized case management; support for activities of daily living and relapse prevention skills; access to vocational/educational programs; assistance linking to medical, psychiatric, counseling, and dental services in the community; education on money management/budgeting; education on accessing peer or community supports and activities such as church, AA/NA meetings, other sobriety-based/mental health support groups, recreational activities, transportation services, and provision of service work/volunteer/work opportunities.

**Utilization targets:** 13 NTPC

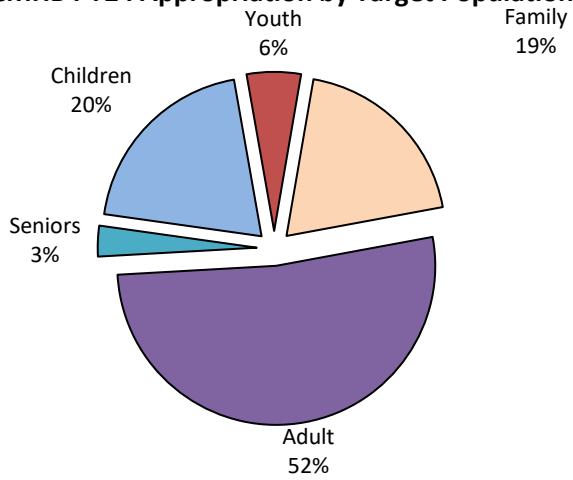
**Utilization actual:** 9 NTPC

**Appropriation of CCMHB Funds by Sector, Population, and Service - Program Year 2024**

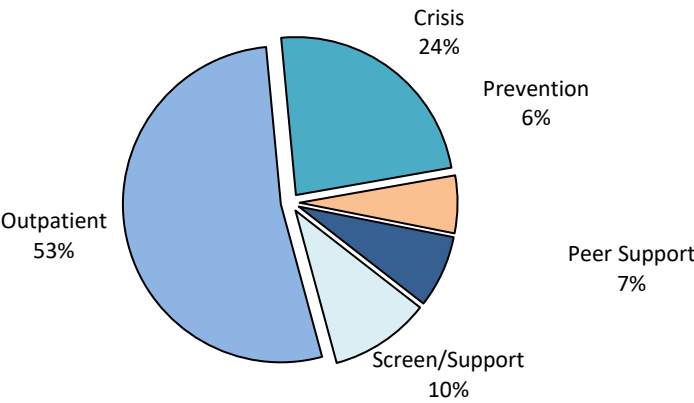
**CCMHB PY24 Appropriation by Community Mental Health Sector**



**CCMHB PY24 Appropriation by Target Population**

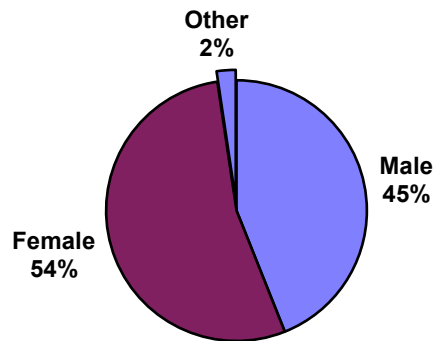


**CCMHB PY24 Appropriation by Type of Service**

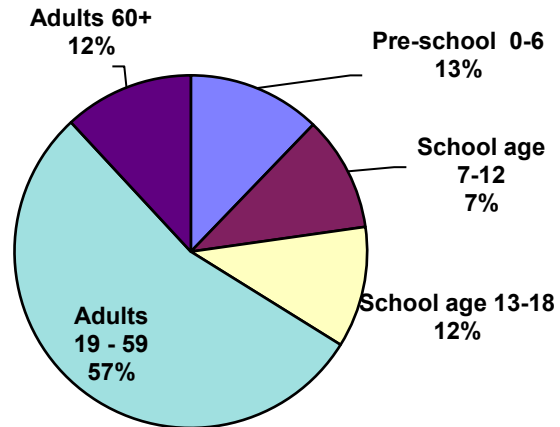


## Demographic and Residency Data for People Served in PY2024

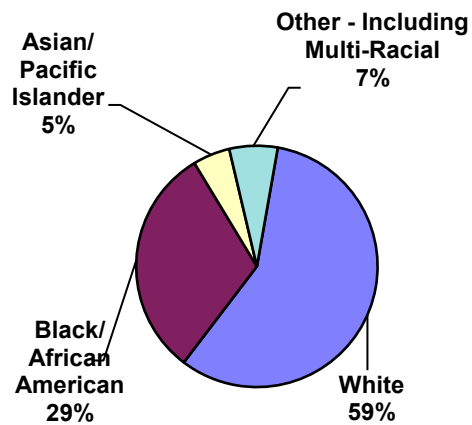
### Gender



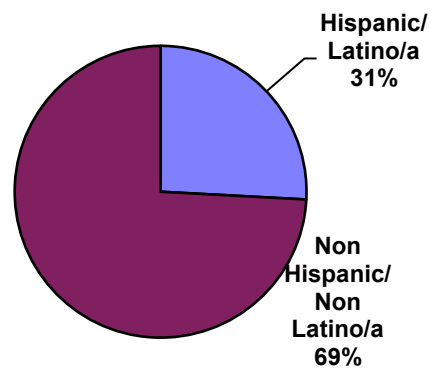
### Age



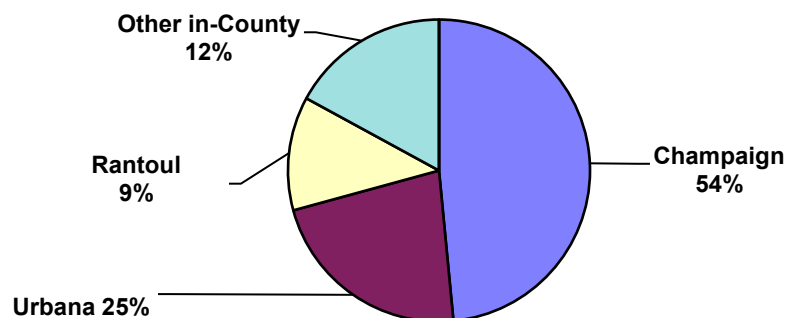
### Race



### Ethnic Origin



### Residency







SECTION II: Strategic Plan 2022-2025  
with FY 2025 One-Year Objectives



Champaign County Mental Health Board

# **Strategic Plan**

For

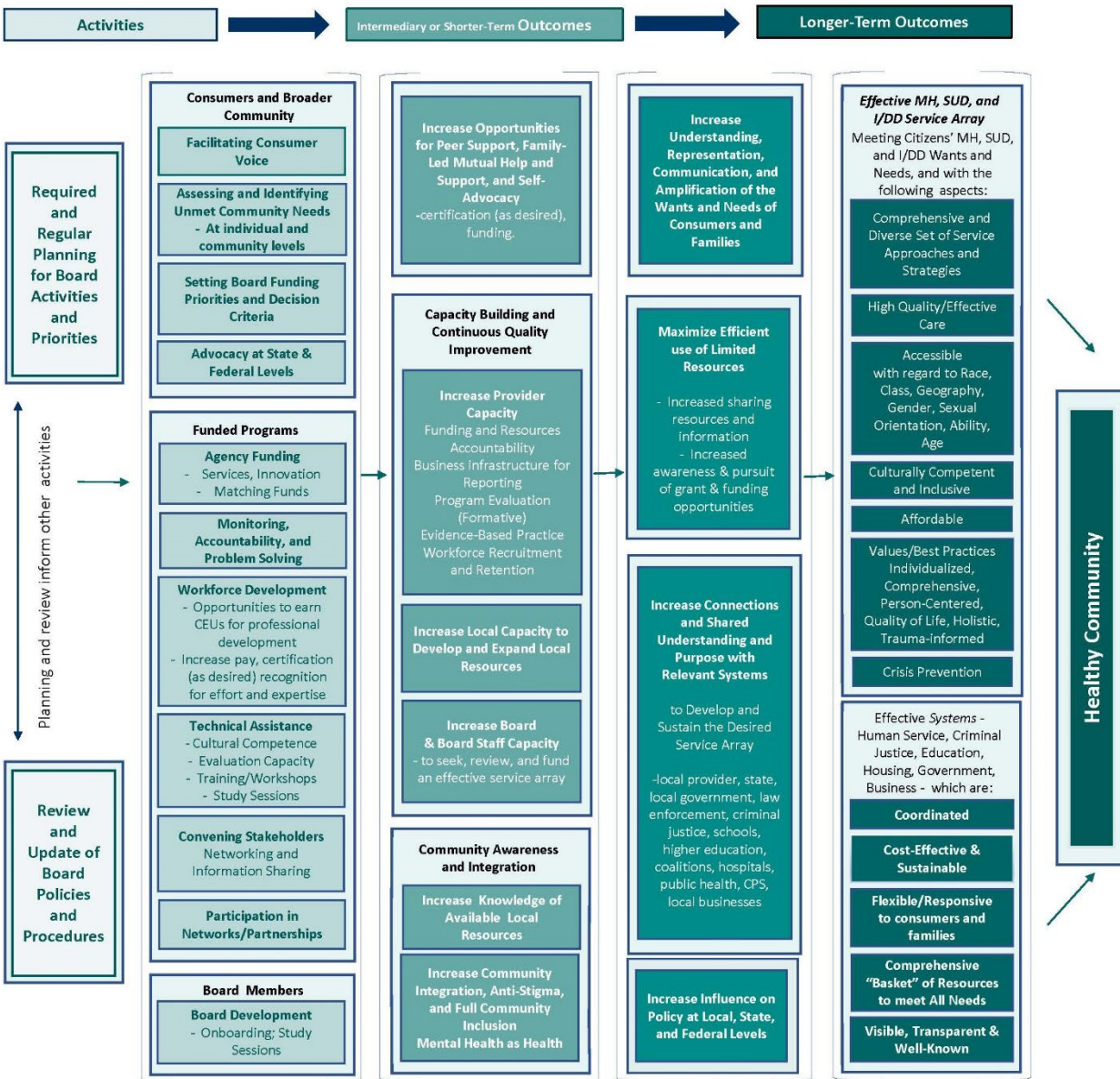
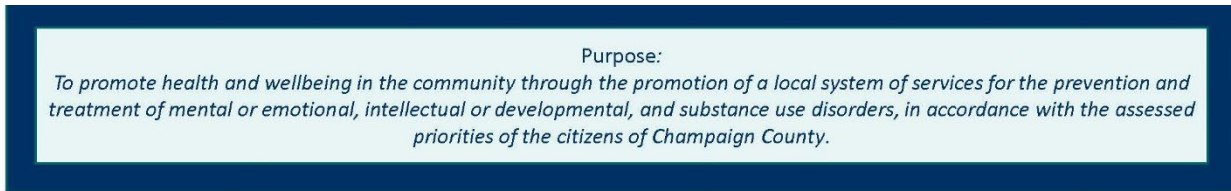
**Fiscal Years 2022-2025**  
**(1/1/2022-12/31/2025)**

With

**One-Year Objectives**

For

**Fiscal Year 2025**  
**(1/1/2025-12/31/2025)**



## Champaign County Mental Health Board

### Three Year Plan for 2022-2024 with One Year Objectives

*Logic Model Developed by Board and Staff with the UIUC Evaluation Capacity Building Project Team during Spring 2021*

# Champaign County Mental Health Board

**WHEREAS**, the Champaign County Mental Health Board has been established under Illinois Revised Statutes (405 ILCS – 20/Section 0.1 et. seq.) in order to "construct, repair, operate, maintain and regulate community mental health facilities to provide mental health services as defined by the local community mental health board, including services for, persons with a developmental disability or substance use disorder, for residents thereof and/or to contract therefor..."

**WHEREAS**, the Champaign County Mental Health Board is required by the Community Mental Health Act to prepare a one- and three-year plan for a program of community mental health services and facilities;

**THEREFORE**, the Champaign County Mental Health Board does hereby adopt the following Mission Statement and Statement of Purposes to guide the development of the mental health plan for Champaign County:

## MISSION STATEMENT

*The mission of the CCMHB is the promotion of a local system of services for the prevention and treatment of mental or emotional, intellectual or developmental, and substance use disorders, in accordance with the assessed priorities of the citizens of Champaign County.*

## STATEMENT OF PURPOSES

1. To plan, coordinate, evaluate, and allocate funds for the comprehensive local system of mental health, intellectual and developmental disabilities, and substance use disorder services for Champaign County.
2. To promote family-friendly community support networks for the at-risk, underserved or undervalued, and general populations of Champaign County.
3. To increase public and private support for the local system of services.
4. To further develop systematic exchange of information about local services and needs between the public/private service systems and the CCMHB.

To accomplish these purposes, the Champaign County Mental Health Board shall collaborate with the public and private sectors in providing the resources necessary for the effective functioning of the community mental health system.

# ***COORDINATED SYSTEMS OF CARE***

## **Goal #1:**

Support a continuum of services to improve the quality of life experienced by individuals with mental or emotional disorders, substance use disorders, or intellectual and/or developmental disabilities and their families residing in Champaign County.

**Objective 1.1:** With input from people served and their loved ones, whenever possible, and with clear connection between the model and best outcomes for people served, encourage use of appropriate evidence-based, evidence-informed, recommended, innovative, or promising practice models.

(Allocation Priority/Criteria Objective)

**Objective 1.2:** Promote wellness for people with MI, SUD, or I/DD, to prevent and reduce early mortality, through access to services addressing basic needs, enrollment in benefit plans, and coordinated access to primary care.

(Allocation Priority/Criteria and Collaboration/Coordination Objective)

**Objective 1.3:** Support development or expansion of residential and employment supports for persons with behavioral health diagnoses and no other payor source.

(Allocation Priority/Criteria Objective)

**Objective 1.4:** Encourage and participate in community efforts to prevent overdose deaths and expand SUD prevention and treatment.

(Allocation Priority/Criteria and Collaboration/Coordination Objective)

**Objective 1.5:** Build resiliency and support recovery, e.g., peer supports, outside of a clinical setting. Peer-run/operated, mutual help groups support professional medical therapy for recovery, maintenance of recovery, and familial support.

(Allocation Priority/Criteria Objective)

**Objective 1.6:** Utilizing expertise of consultant(s) selected through RFP2022-010, build evaluation capacity of contracted providers in order to improve positive outcomes for those engaging in funded services.

(Policy Objective)

**Objective 1.7:** Engage with consultant(s) selected through RFP2022-010 to improve providers' ability to set internal goals for advancing the evaluation of program performance outcomes.

(Policy Objective)

**Objective 1.8:** Support workforce recruitment and retention efforts, which may include incentive payments, educational assistance, and system advocacy.

(Allocation Priority/Criteria Objective)

**Objective 1.9:** Support flexible service options, such as telehealth, virtual, and home visits, to maintain and improve access and engagement with clients and community.

(Collaboration/Coordination Objective)

**Objective 1.10:** With input from people with relevant lived experience, their loved ones, service providers, and other stakeholders, and through other needs assessment activities and environmental scan, develop and review a new Three-Year Plan for 2026-2028.

(Policy Objective)

## **Goal #2:**

Sustain commitment to addressing health disparities experienced by historically underinvested populations.

**Objective 2.1:** Support an inclusive network of culturally and linguistically responsive and family driven support groups.

(Allocation Priority/Criteria Objective)

**Objective 2.2:** Provide technical assistance for funded agencies' cultural and linguistic competence plans to meet the needs of all people served and to engage with those seeking services.

(Collaboration/Coordination Objective)

**Objective 2.3:** Encourage community-based organizations to allocate resources for training, technical assistance, outreach, language access and communication assistance, and professional development activities for all staff and governing or advisory boards, to

advance cultural and linguistic competence and attract and retain a diverse professional workforce.

(Allocation Priority/Criteria Objective)

**Objective 2.4:** Where families and communities are disproportionately impacted by incarceration, encourage the development of social networks, peer supporters and mentors, and improved access to resources.

(Allocation Priority/Criteria and Policy Objective)

**Objective 2.5:** Assess and address the unmet MI, SUD, or I/DD service and support needs of residents of rural areas and farm communities, with assistance from the Regional Health Plan Collaboration.

(Collaboration/Coordination and Policy Objective)

**Objective 2.6:** With assistance from the Regional Health Plan Collaboration, assess the impact of public health threats on racial, ethnic, gender and/or sexual minority groups, or other at-risk populations in Champaign County. Encourage providers to improve health and behavioral health outcomes for all residents.

(Collaboration/Coordination and Allocation Priority/Criteria Objective)

### **Goal #3:**

On behalf of all eligible Champaign County residents, improve access to the supports, services, and resources currently available and beneficial to some.

**Objective 3.1:** Participate in and report on various coordinating councils whose missions align with the Board's, with the intent of strengthening coordination between providers in the delivery of services. Identify or develop opportunities for people with lived expertise to participate in or shape the work of these councils.

(Collaboration/Coordination Objective)

**Objective 3.2:** Communicate on issues of mutual interest with the C-U Public Health District (CUPHD) and the Champaign County Board, such as effective responses to interpersonal and community violence or Opioid Use Disorder.

(Collaboration/Coordination Objective)



**Objective 3.3:** Engage with CUPHD, United Way, Carle Foundation Hospital, and OSF in the Regional Health Plan Collaboration toward the 2026 Community Health Improvement Plan.

(Collaboration/Coordination Objective)

**Objective 3.4:** Increase awareness of community-based services and access to information on when, where, and how to apply for services, including through system navigators and expanded language access.

(Allocation Priority/Criteria and Collaboration/Coordination Objective)

## **Goal #4:**

Continue the collaborative working relationship with the Champaign County Board for Care and Treatment of Persons with a Developmental Disability (CCDDB).

**Objective 4.1:** Coordinate integration, alignment, and allocation of resources with the CCDDB to ensure the efficacious use of resources for people with I/DD.

(Allocation Priority/Criteria Objective)

**Objective 4.2:** Increase the reach and variety of strategies that empower people who have I/DD and improve their access to integrated community settings.

(Policy Objective)

**Objective 4.3:** Using input from people who have I/DD, collaborate with the CCDDB on promoting inclusion and respect for people with I/DD.

(Allocation Priority/Criteria and Collaboration/Coordination Objective)

**Objective 4.4:** Using input from people who have I/DD, collaborate with the CCDDB for use of the I/DD Special Initiatives Fund to meet the needs of Champaign County residents who have I/DD and significant support needs.

(Policy and Allocation Priority/Criteria Objective)

## ***CHILDREN AND FAMILY FOCUSED PROGRAMS AND SERVICES***

## **Goal #5:**

Building on progress achieved through the six-year Cooperative Agreement between the Federal Substance Abuse and Mental Health Services Administration (SAMHSA), the Illinois Department of Human Services (IDHS), and the Champaign County Mental Health Board (CCMHB), sustain the SAMHSA/IDHS system of care model.

**Objective 5.1:** Through the Champaign County Community Coalition, strengthen awareness and communication across the child- and youth- serving systems.  
(Collaboration/Coordination Objective)

**Objective 5.2:** Build on the successes of Champaign County family-run organizations that incorporate family-driven and youth-guided principles in use of peer support to assist multi-system involved youth and their families.  
(Allocation Priority/Criteria Objective)

**Objective 5.3:** Support a coordinated response to community violence, including gun violence, that leverages the Board's funded services for children, youth, and families, with financial support from other funders to mitigate the public health crisis associated with violence.  
(Collaborative/Coordination and Policy Objective)

**Objective 5.4:** Promote and support interventions that specifically address historical trauma experienced by African American and other minority youth.  
(Allocation Priority/Criteria Objective)

**Objective 5.5:** Sustain commitment to trauma-informed, family-driven, youth-guided, and culturally responsive systems of care. Encourage cross-system collaboration to improve student outcomes, share resources, and foster professional growth.  
(Policy and Collaboration/Coordination Objective)

**Objective 5.6:** Acknowledging racial trauma as a mental health issue, support programs which offset its impact on children, youth, and families.  
(Policy Objective)

**Objective 5.7:** Advocate at local, state, and national levels for full implementation and funding of safety net, screening, and crisis response for all children and families, including those who have multi-system involvement or encounter multiple barriers to success and health. Barriers include long wait times for psychiatric care and complicated or siloed regulatory and payment systems.

(Collaboration/Coordination Objective/Policy Objective)

## ***CRIMINAL JUSTICE AND MENTAL HEALTH SYSTEM COLLABORATION***

### **Goal #6:**

Divert persons with behavioral health needs or intellectual and/or developmental disabilities from the criminal justice system, as appropriate.

**Objective 6.1:** Through the Crisis Intervention Team Steering Committee, collaborate with law enforcement and crisis service providers toward positive health and behavioral health outcomes for all Champaign County residents. Use input from people who have experienced a behavioral health crisis, along with their family members and peers.

(Collaboration/Coordination Objective)

**Objective 6.2:** Sustain efforts to engage persons who have behavioral health diagnoses and are re-entering the community from jail or prison or have recent involvement with the criminal justice system, in treatment and other support services. Improve these services and supports by using input from people with relevant lived experience.

(Allocation Priority/Criteria Objective)

**Objective 6.3:** Support integrated planning and service coordination for adults involved in the criminal justice system through participation in the Champaign County Reentry Council and Problem Solving Court Steering Committee to address identified needs and opportunities to improve and expand care.

(Collaboration/Coordination Objective)

**Objective 6.4:** Through the National Association of County Behavioral Health and Developmental Disability Directors (NACBHDD) and National Association of Counties

(NACo), use and promote technical assistance and support to improve outcomes for Champaign County residents who have behavioral health needs and justice system involvement.

(Collaboration/Coordination Objective)

## **Goal #7:**

In conjunction with the Champaign County Sheriff's Office, other law enforcement, and community stakeholders, pursue a continuum of services as an alternative to incarceration and/or overutilization of local emergency departments for persons with behavioral health needs or developmental disabilities.

**Objective 7.1:** Support local collaborations to increase housing and employment supports for persons with MI, SUD, or I/DD.

(Allocation Priority/Criteria and Collaboration/Coordination Objective)

**Objective 7.2:** Identify supports and services which reduce unnecessary incarceration, hospitalization, and institutionalization.

(Collaboration/Coordination Objective)

**Objective 7.3:** Collaborate in the development of a full crisis response continuum around 988, with input from people who have experienced a behavioral health crisis.

(Allocation Priority/Criteria and Collaboration/Coordination Objective)

## **Goal #8:**

Support interventions for youth who have juvenile justice system involvement.

**Objective 8.1:** Through the Youth Assessment Center Advisory Committee or other similar collaboratives, advocate for community and education-based interventions contributing to positive youth development and decision-making.

(Collaboration/Coordination Objective)

**Objective 8.2:** Through the Champaign County Community Coalition and other community focused initiatives, encourage multi-system collaborative approaches for improving outcomes for youth and families and communities.  
(Collaboration/Coordination Objective)

## ***COMMUNITY ENGAGEMENT & ADVOCACY***

### **Goal #9:**

Address the need for acceptance, inclusion, and respect associated with a person's or family members' mental illness, substance use disorder, intellectual and/or developmental disability through broad based community education efforts to increase community acceptance and positive self-image.

**Objective 9.1:** Promote inclusion and challenge stigma and discrimination through collaborations such as the disABILITY Resource Expo, Ebertfest, and other related community education events. Whenever possible, include student groups or interns in these efforts.  
(Collaboration/Coordination Objective)

**Objective 9.2:** Promote SUD prevention initiatives as a community education tool.  
(Collaboration/Coordination Objective)

**Objective 9.3:** Promote behavioral health community education initiatives, such as National Depression Screening Day, to encourage individuals to be screened and seek further assistance where indicated.  
(Collaboration/Coordination Objective)

**Objective 9.4:** To integrate people with behavioral health disorders and/or I/DD into community life in Champaign County, seek out and share their direct input with other collaborations and leadership. Whenever possible, include these people in any organizations which have been formed on their behalf. Emphasize inclusion as a benefit to all members of the community, regardless of ability.  
(Allocation Priority/Criteria Objective)

**Objective 9.5:** Support Mental Health First Aid for Adults, Youth, and Teens, to encourage community members to provide first responder support for people who may be experiencing a crisis.

(Collaboration/Coordination Objective)

**Objective 9.6:** With input from people who have MI, SUD, or I/DD, make information on community services and resources more accessible and user-friendly.

(Collaboration/Coordination Objective)

## **Goal #10:**

Engage with other local, state, and national stakeholders on emerging issues.

**Objective 10.1:** Monitor the local impacts of changes in Medicaid and Managed Care and Medicaid waivers Advocate, through Association of Community Mental Health Authorities of Illinois (ACMHAI) and other organizations for increased service capacity and service options sufficient to meet demand in Champaign County.

(Collaboration/Coordination Objective)

**Objective 10.2:** Track relevant class action cases, e.g., Ligas Consent Decree and Williams Consent Decree, and advocate for the allocation of state resources sufficient to meet needs of clients returning to home communities or seeking fuller integration in their communities.

(Policy Objective)

**Objective 10.3:** Participate in the National Association of County Behavioral Health and Developmental Disability Directors (NACHBDD), National Association of Counties (NACo), and similar organizations, to understand and report on trends, best practices, and innovations and to advocate at the national level on behalf of Champaign County residents.

(Collaboration/Coordination Objective)

**Objective 10.4:** Track and advocate for implementation of the recommendations of the Illinois Children's Behavioral Health Transformation Initiative.

(Policy Objective)

**Objective 10.5:** With other organizations and policymakers whenever appropriate, advocate at the state and national levels on the issues of expanding and diversifying the behavioral health and I/DD workforces. Strategies may include supporting legislation to revise licensure

and certification processes. Participate in planning and policy development with state agencies such as IDHS, advocating for the needs and choices of Champaign County residents, based on direct and indirect input from people with MI, SUD, or I/DD.  
(Policy Objective)

**Objective 10.6:** Advocate on behalf of and with those residents of Champaign County who receive Home Based Support, who have been selected from PUNS, or who are eligible and enrolled and waiting for PUNS selection.  
(Collaboration/Coordination Objective)

**Objective 10.7:** Participate in the development of recommendations for the redesign of Illinois' I/DD service system, through Engage Illinois and similar collaborations.  
(Policy Objective)

*\*Approved November 20, 2024*