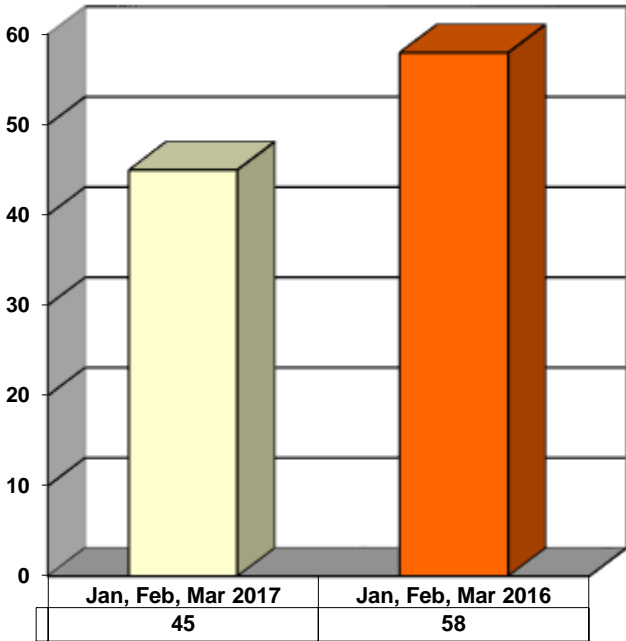
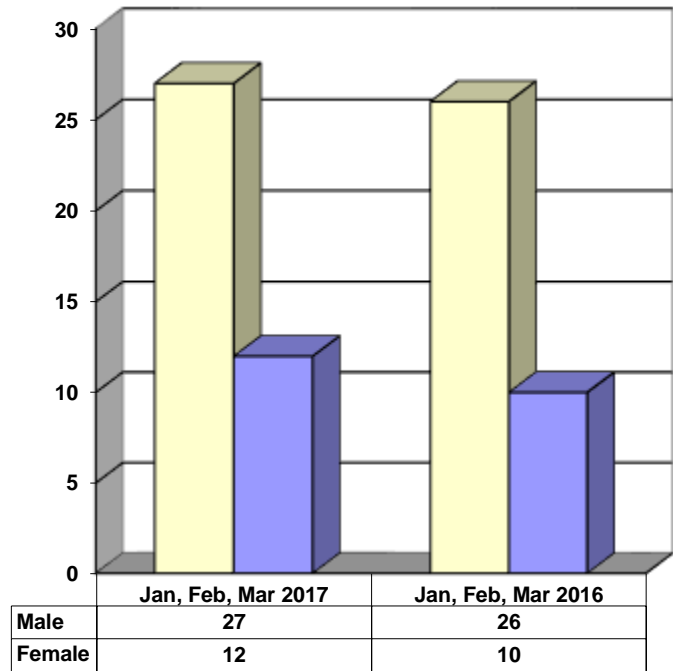


**JUVENILE SUPERVISION INFORMATION
MONTHS OF JANUARY, FEBRUARY AND MARCH 2017
(Compared to Prior Year)**

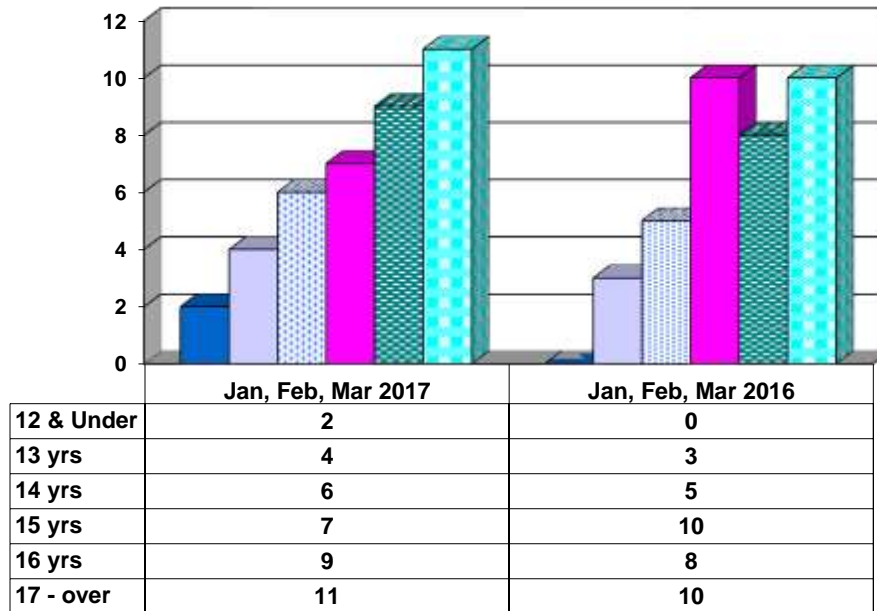
Juvenile Delinquency Petitions Filed



Gender Demographics for Juvenile Admissions

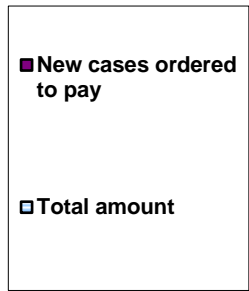
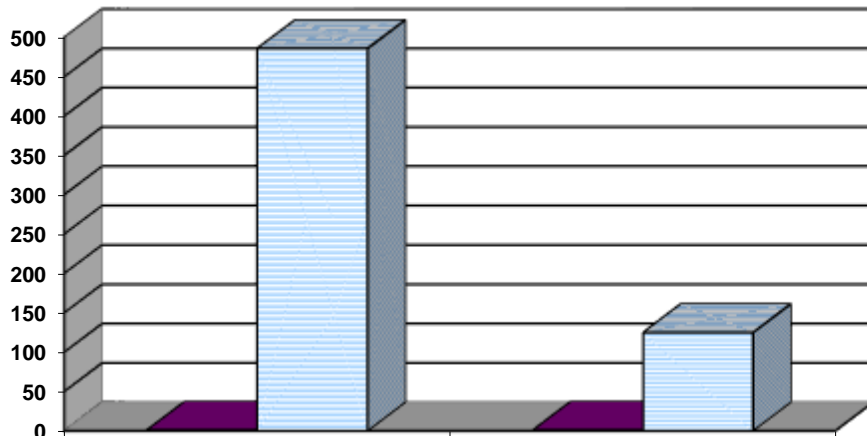


Age Demographics for Juvenile Admissions



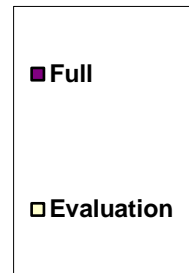
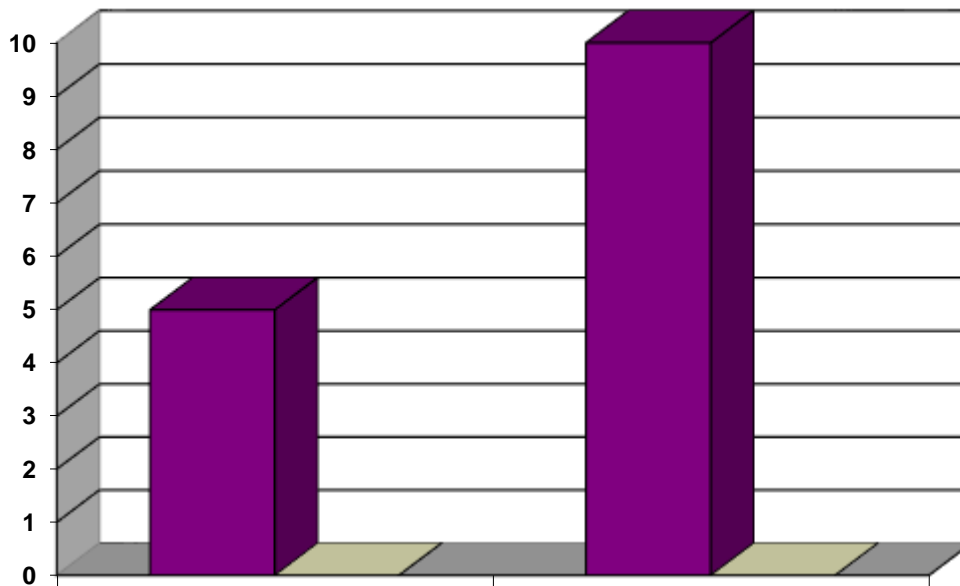
12 & Under
 13 yrs
 14 yrs
 15 yrs
 16 yrs
 17 - over

Restitution Ordered in New Juvenile Cases



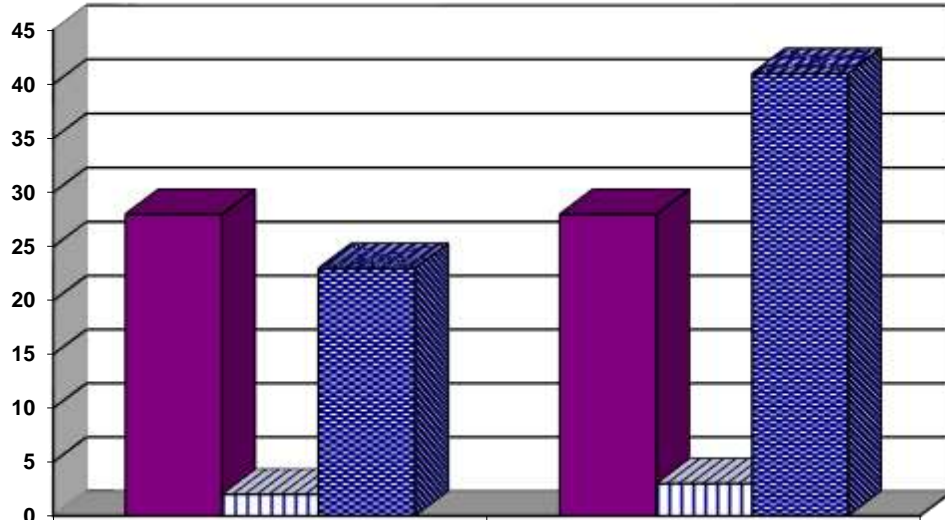
	Jan, Feb, Mar 2017	Jan, Feb, Mar 2016
New cases ordered to pay	1	1
Total amount	\$486	\$125

Commitments to Illinois Department of Juvenile Justice



	Jan, Feb, Mar 2017	Jan, Feb, Mar 2016
Full	5	10
Evaluation	0	0

Investigations Completed by Juvenile Division



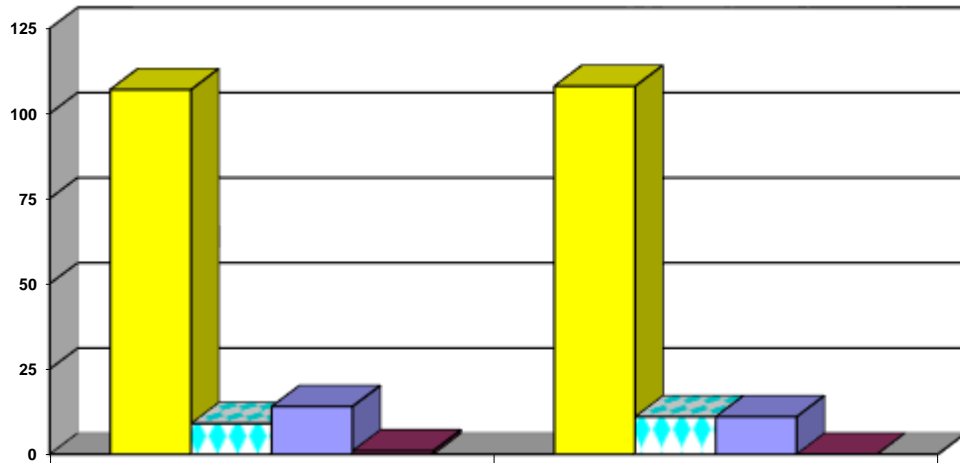
	Jan, Feb, Mar 2017	Jan, Feb, Mar 2016
Social Histories	28	28
Supplemental Social History	2	3
Remission/Review	23	41

■ Social Histories

▨ Supplemental Social History

■ Remission/Review

Juvenile Caseload at End of Reporting Periods



	March 2017	March 2016
Probation	107	108
Continued under Supervision	9	11
Informal	14	11
Other	1	0

■ Probation

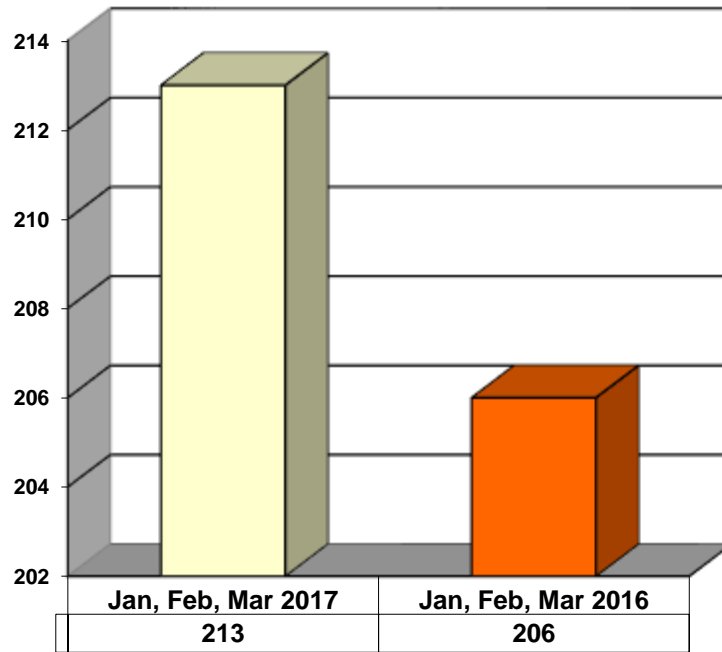
▨ Continued under Supervision

■ Informal

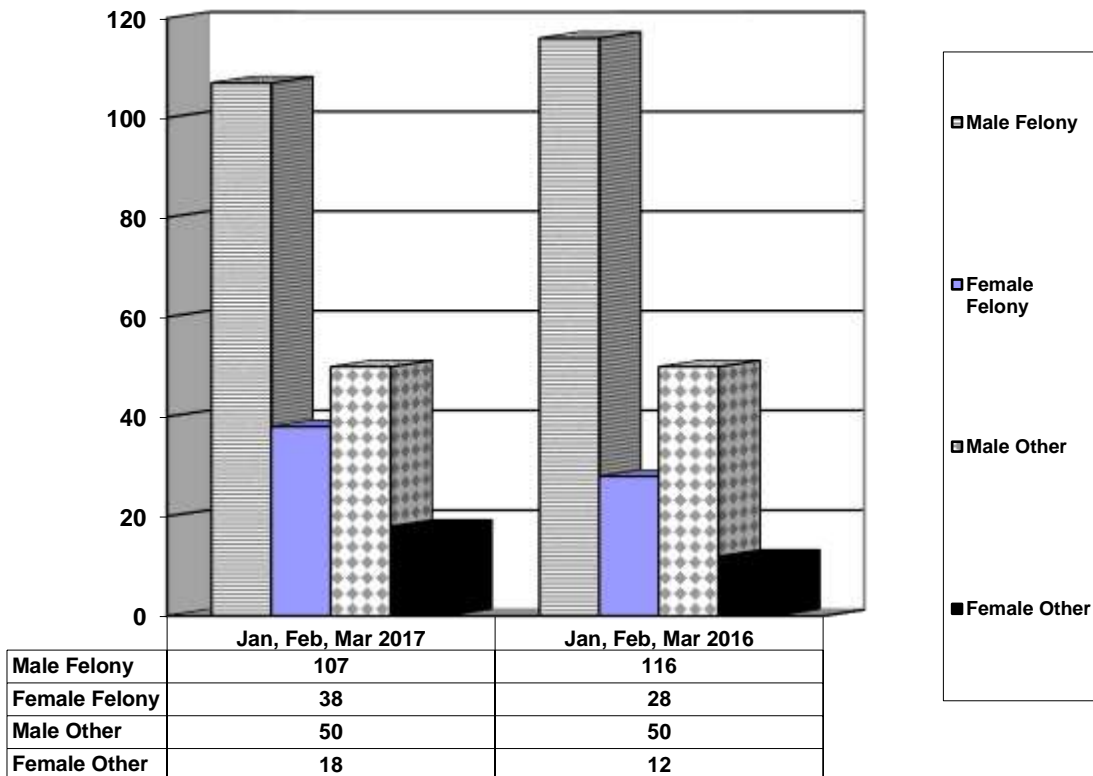
■ Other

**ADULT SUPERVISION INFORMATION
MONTHS OF JANUARY, FEBRUARY AND MARCH 2017
(Compared to Prior Year)**

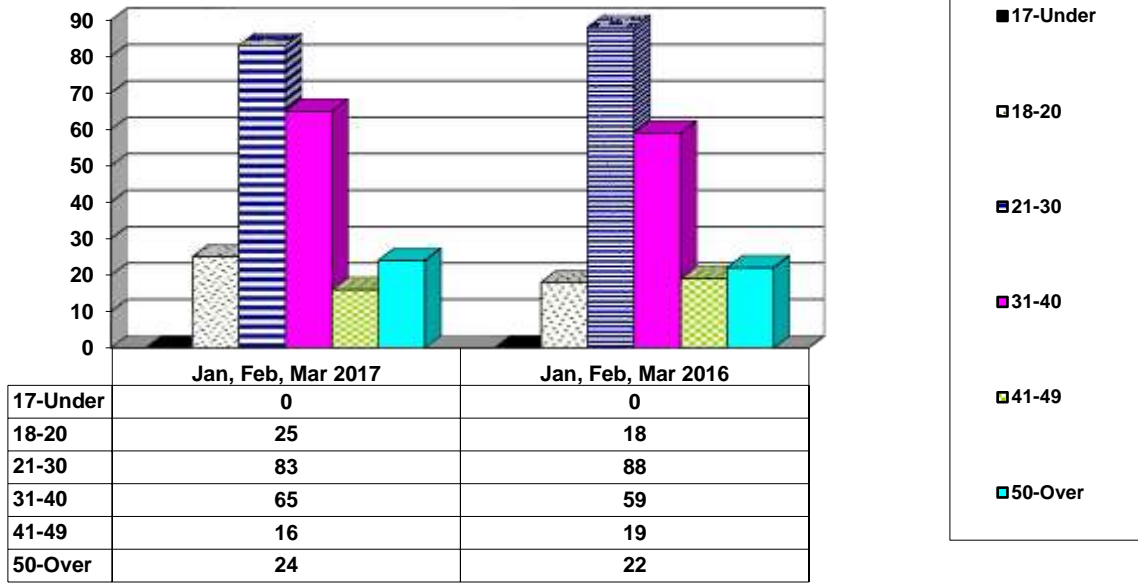
Adult Intakes Completed



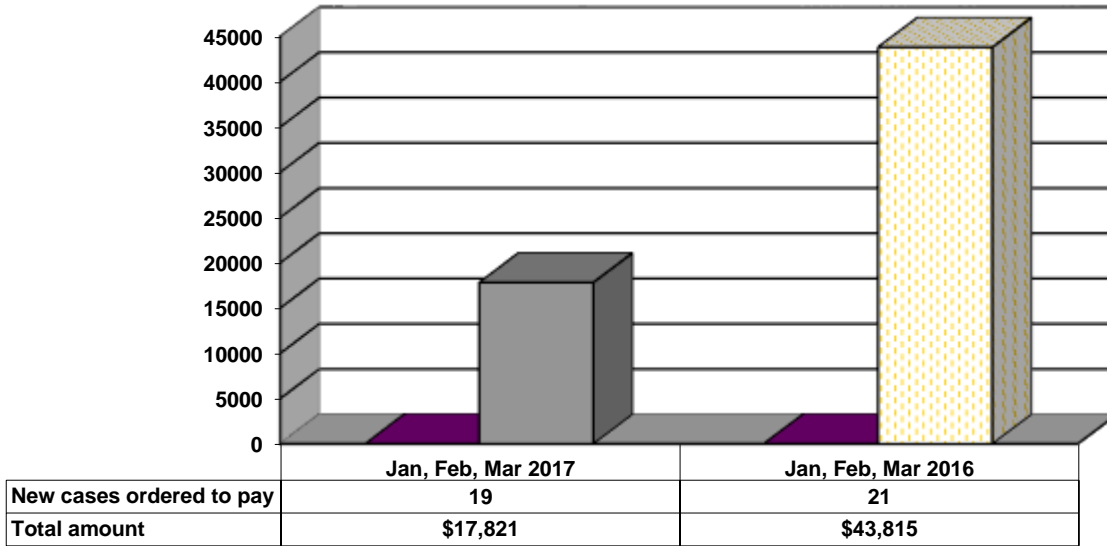
Gender Demographics for Adult Intakes



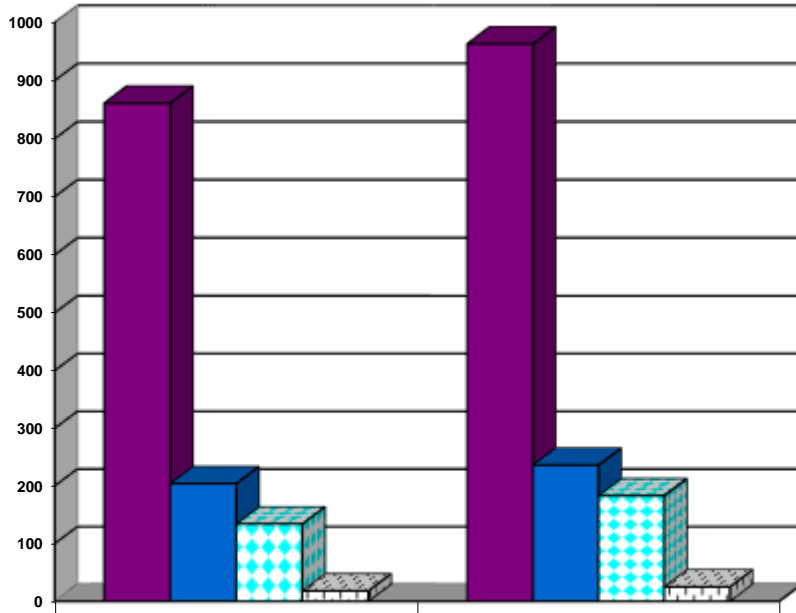
Age Demographics for Adult Intakes



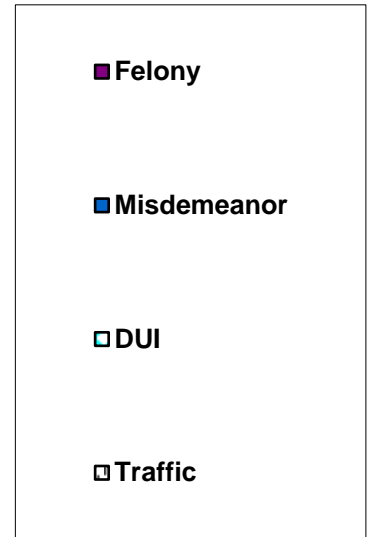
Restitution Ordered in New Adult Cases



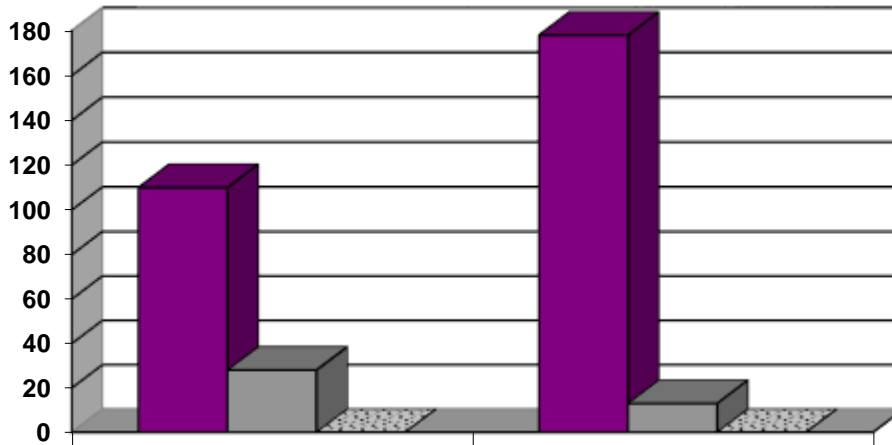
Breakdown of Adult Caseload at End of Reporting Periods



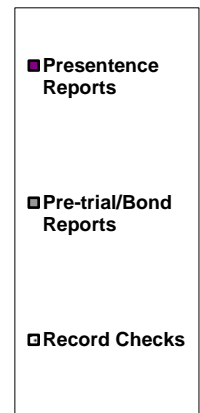
	March 2017	March 2016
Felony	861	963
Misdemeanor	204	236
DUI	134	183
Traffic	18	25



Adult Investigations Completed



	Jan, Feb, Mar 2017	Jan, Feb, Mar 2016
Presentence Reports	110	178
Pre-trial/Bond Reports	28	13
Record Checks	0	0



Commitments to Illinois Department of Corrections

