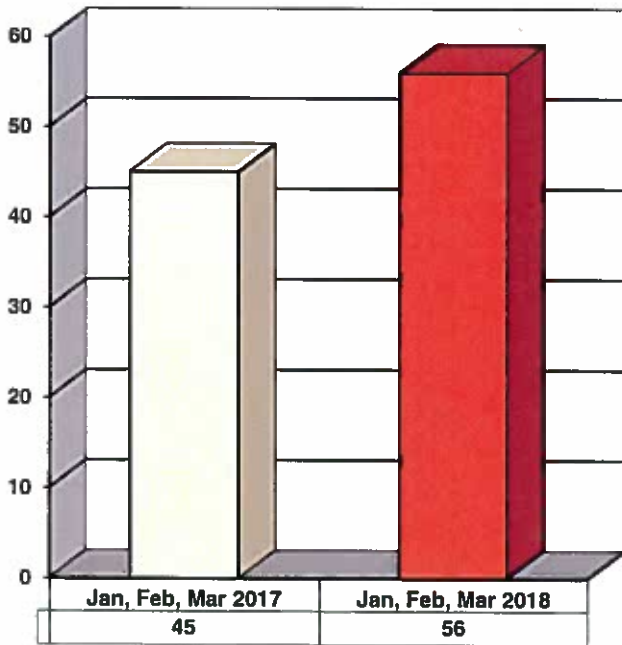
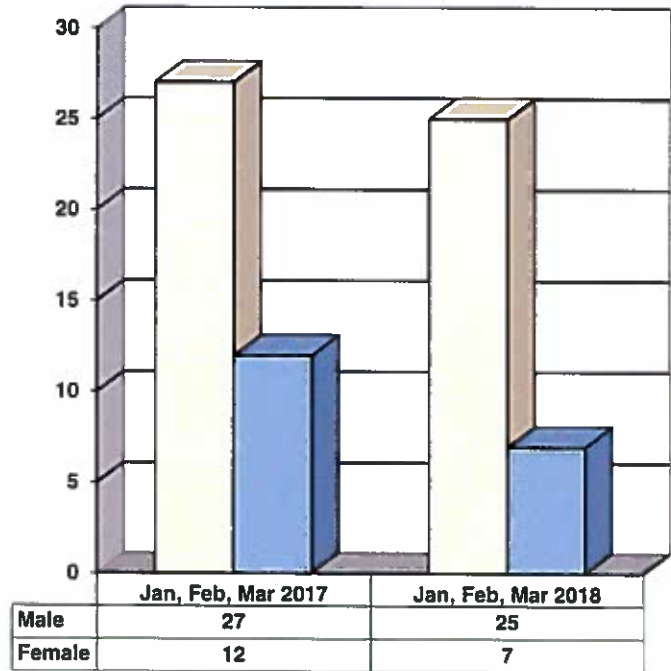


**JUVENILE SUPERVISION INFORMATION
MONTHS OF JANUARY, FEBRUARY AND MARCH 2018
(Compared to Prior Year)**

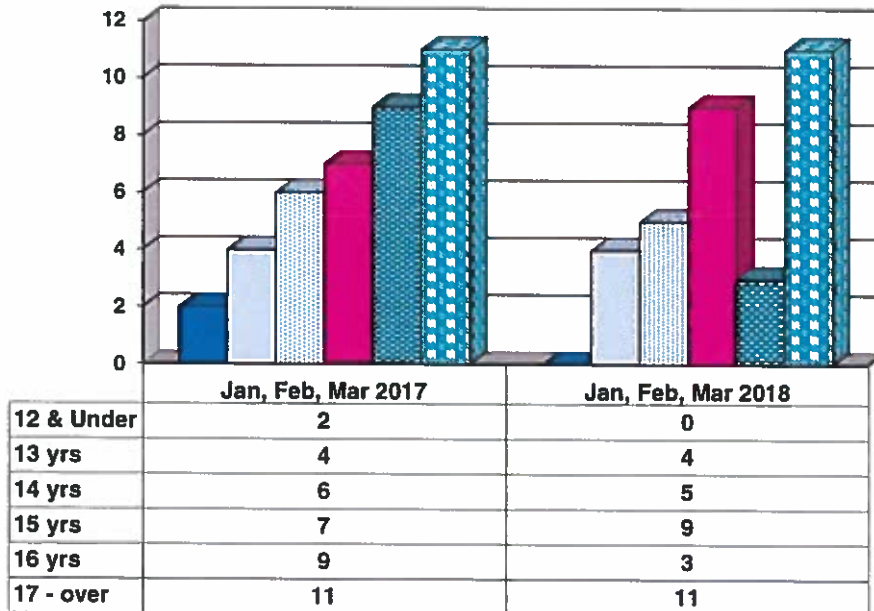
Juvenile Delinquency Petitions Filed



Gender Demographics for Juvenile Admissions

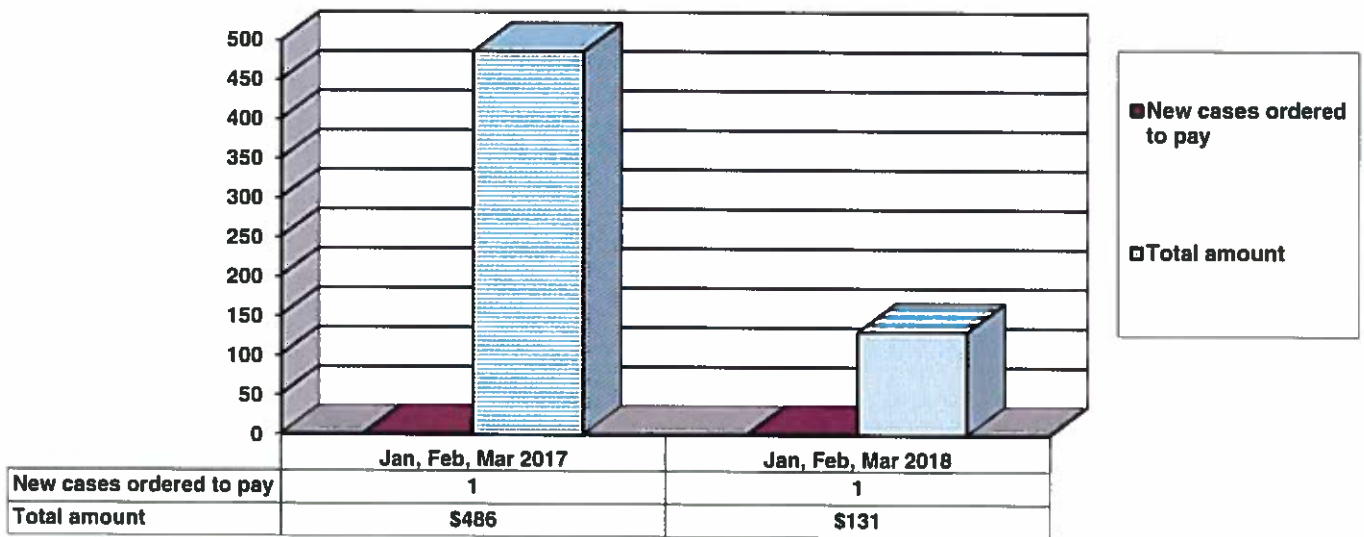


Age Demographics for Juvenile Admissions

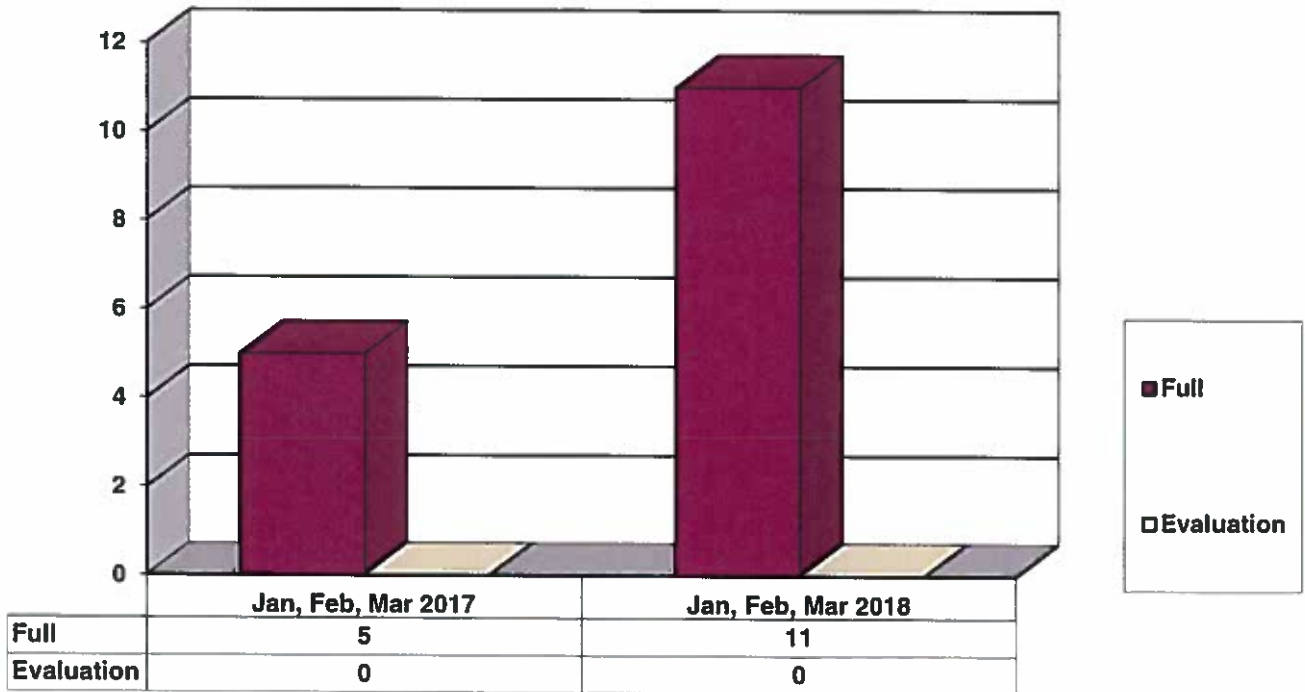


12 & Under
 13 yrs
 14 yrs
 15 yrs
 16 yrs
 17 - over

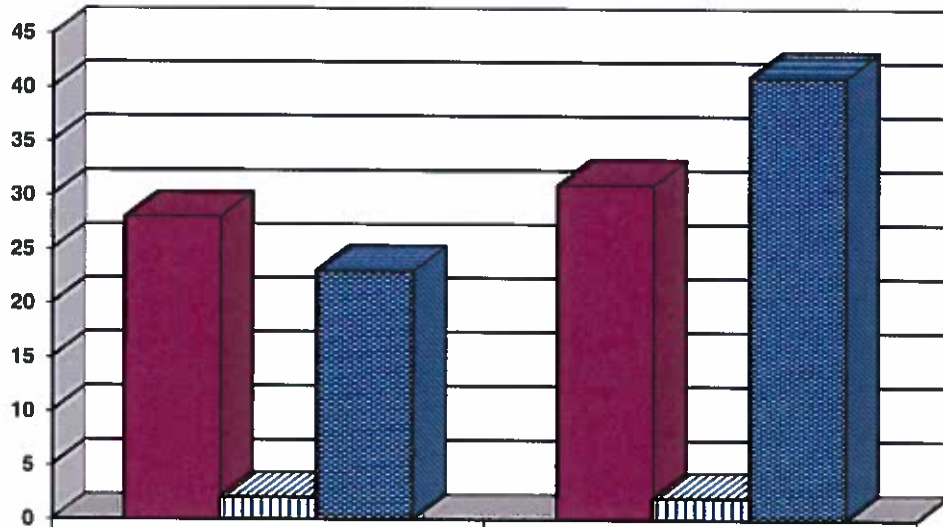
Restitution Ordered in New Juvenile Cases



Commitments to Illinois Department of Juvenile Justice



Investigations Completed by Juvenile Division



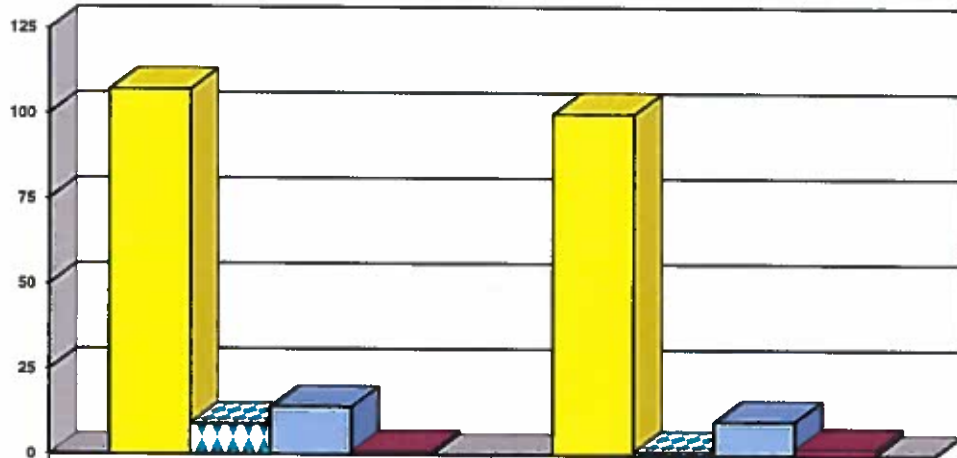
	Jan, Feb, Mar 2017	Jan, Feb, Mar 2018
Social Histories	28	31
Supplemental Social History	2	2
Remission/Review	23	41

■ Social Histories

▨ Supplemental Social History

■ Remission/Review

Juvenile Caseload at End of Reporting Periods

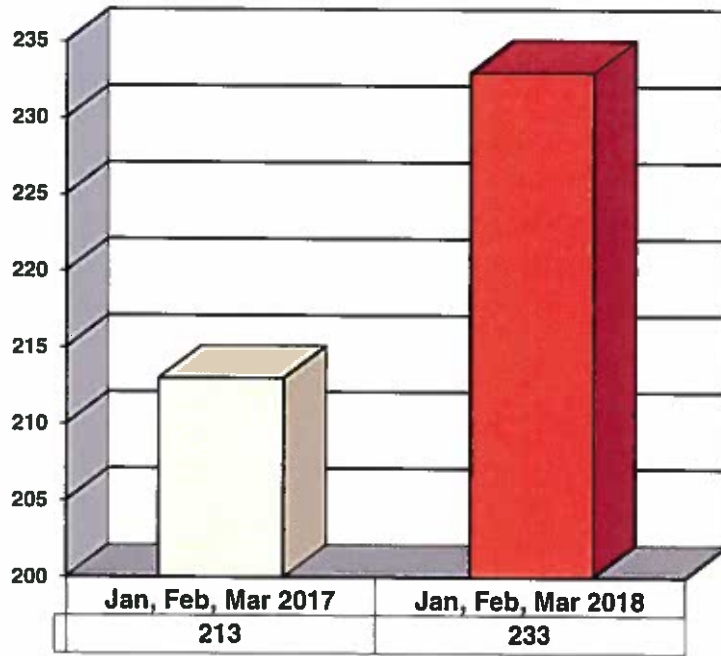


	March 2017	March 2018
Probation	107	100
Continued under Supervision	9	1
Informal	14	10
Other	1	2

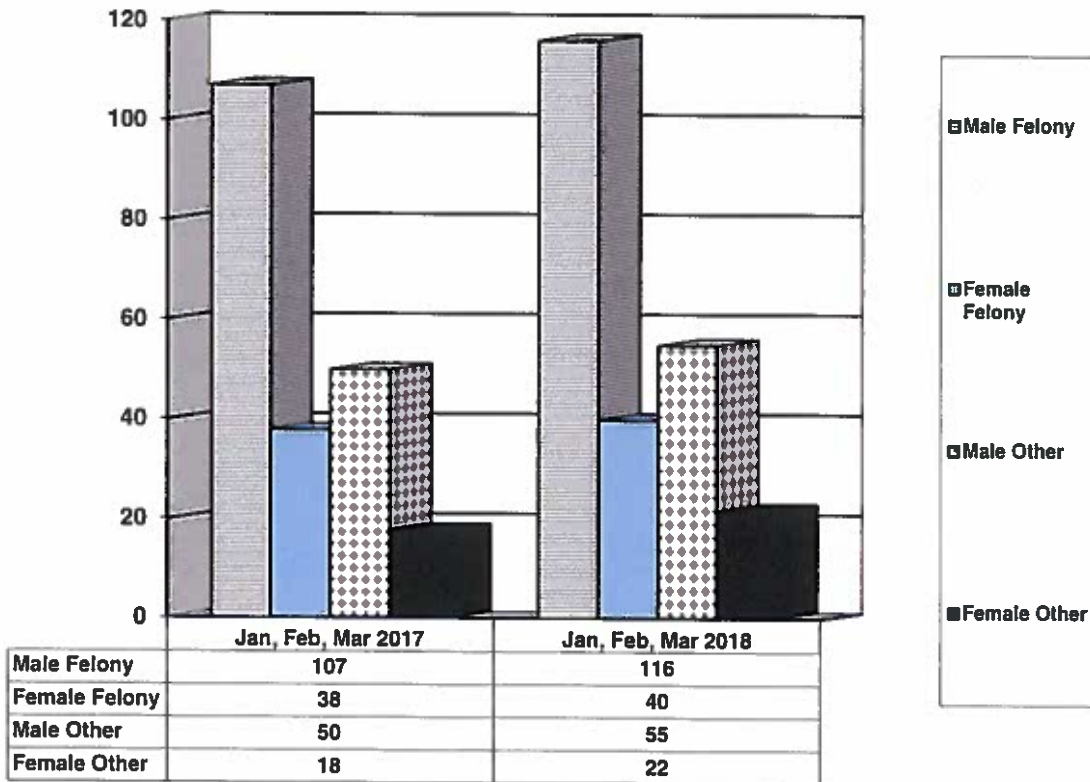
■ Probation ▨ Continued under Supervision ■ Informal ■ Other

**ADULT SUPERVISION INFORMATION
MONTHS OF JANUARY, FEBRUARY AND MARCH 2018
(Compared to Prior Year)**

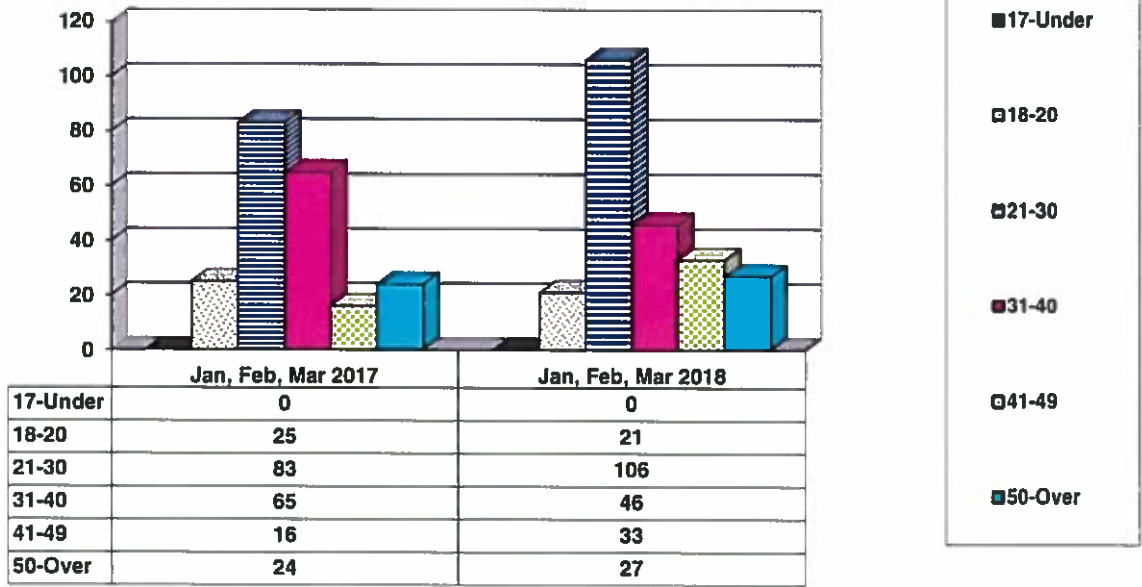
Adult Intakes Completed



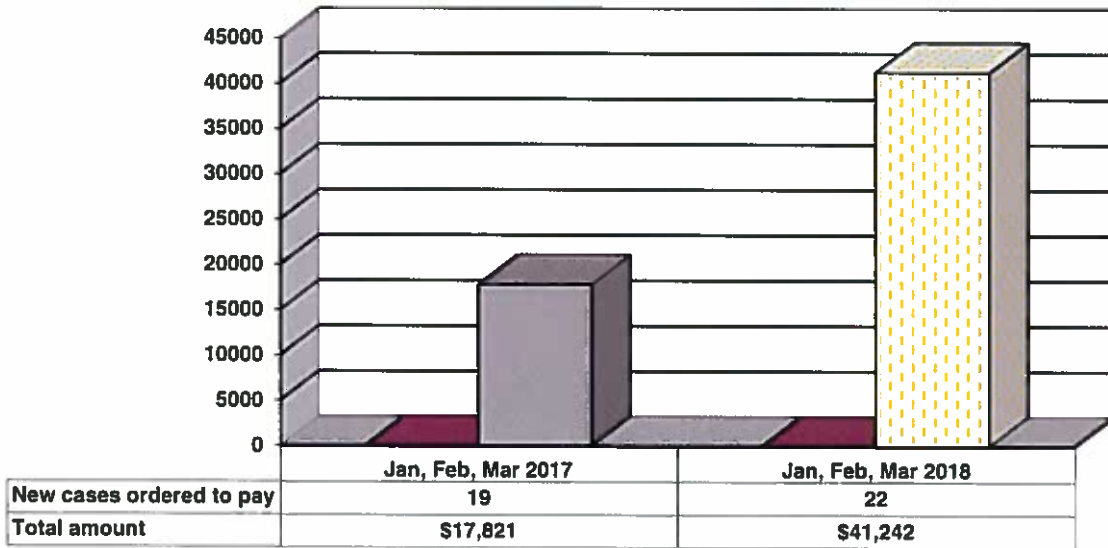
Gender Demographics for Adult Intakes



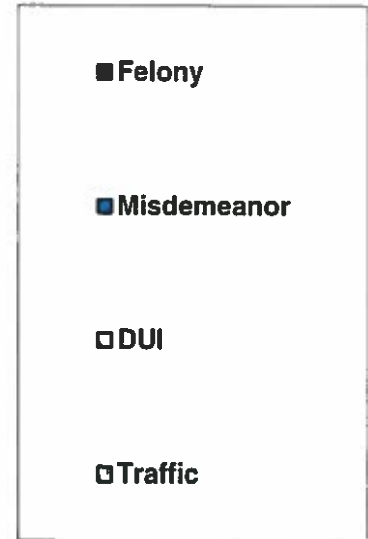
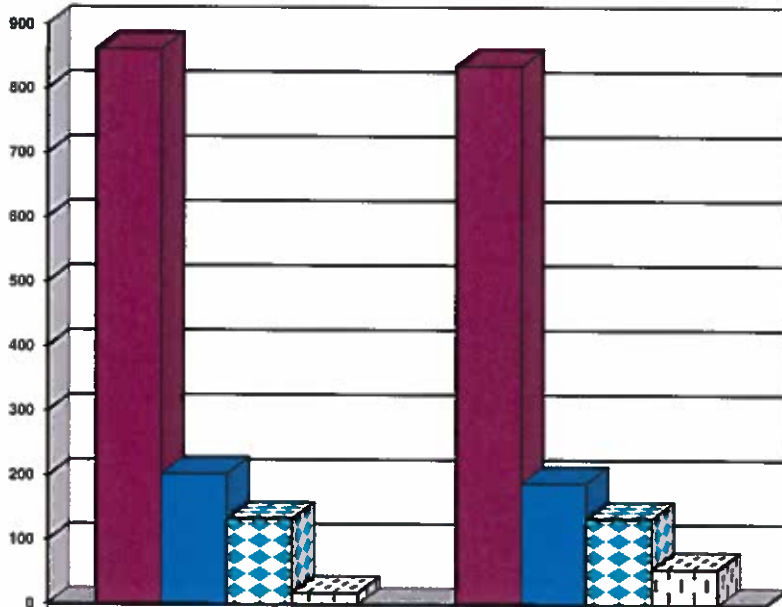
Age Demographics for Adult Intakes



Restitution Ordered in New Adult Cases

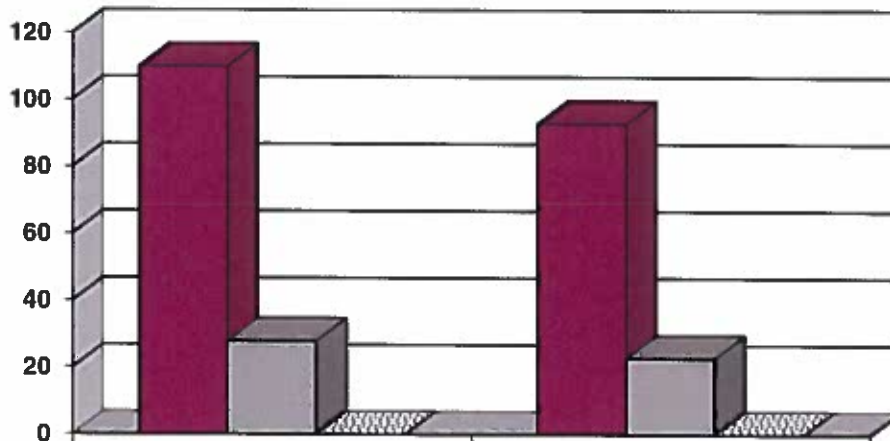


Breakdown of Adult Caseload at End of Reporting Periods



	March 2017	March 2018
Felony	861	835
Misdemeanor	204	190
DUI	134	135
Traffic	18	56

Adult Investigations Completed



	Jan, Feb, Mar 2017	Jan, Feb, Mar 2018
Presentence Reports	110	93
Pre-trial/Bond Reports	28	23
Record Checks	0	0

Commitments to Illinois Department of Corrections

