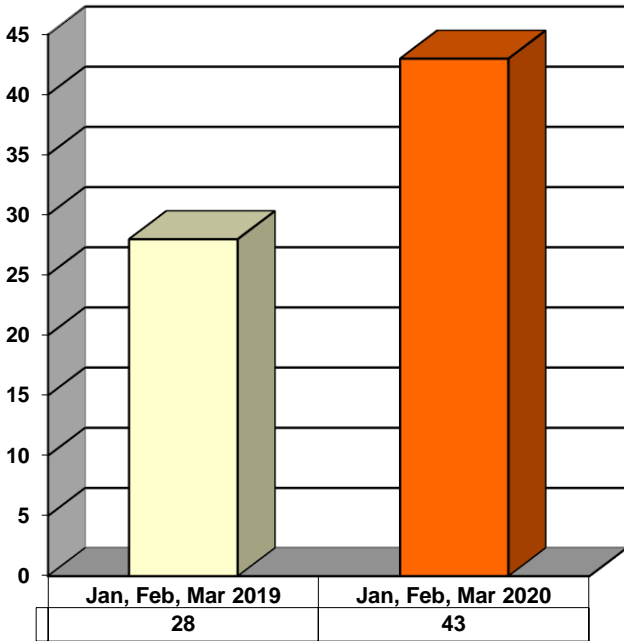
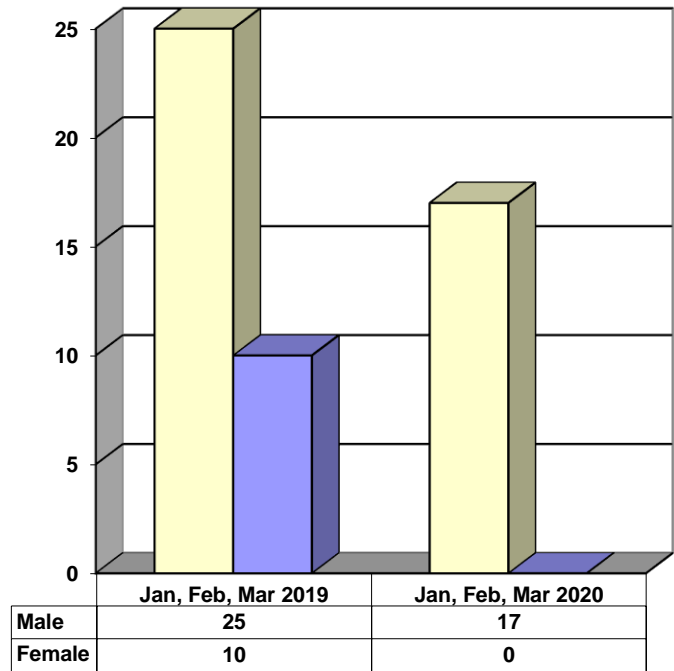


JUVENILE SUPERVISION INFORMATION
MONTHS OF JANUARY, FEBRUARY AND MARCH 2020
 (Compared to Prior Year)

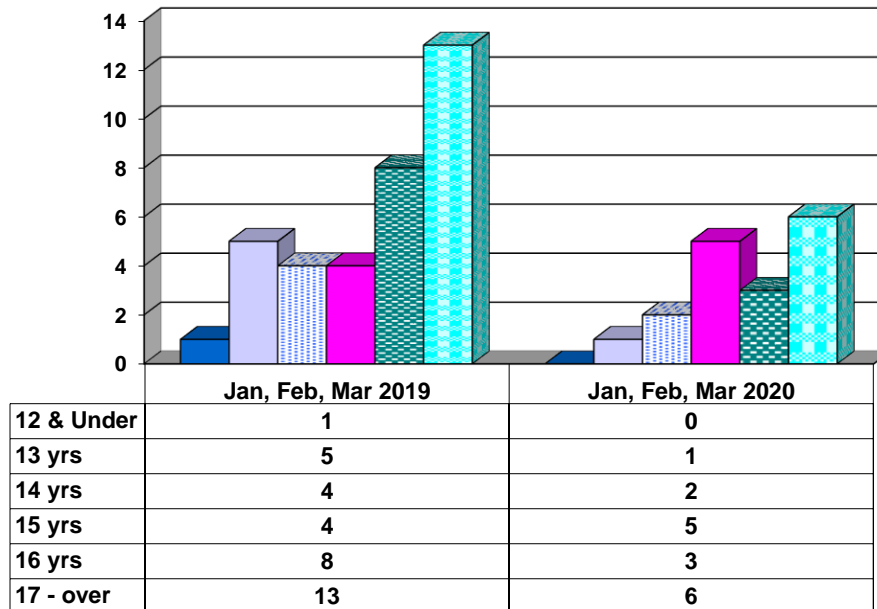
Juvenile Delinquency Petitions Filed



Gender Demographics for Juvenile Admissions

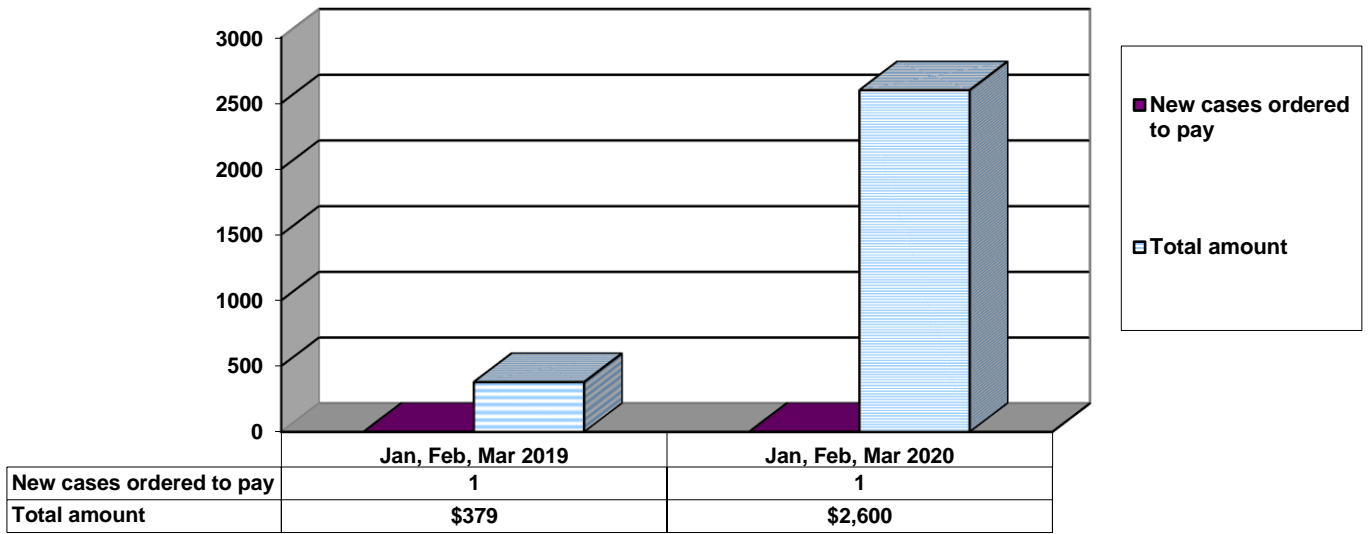


Age Demographics for Juvenile Admissions

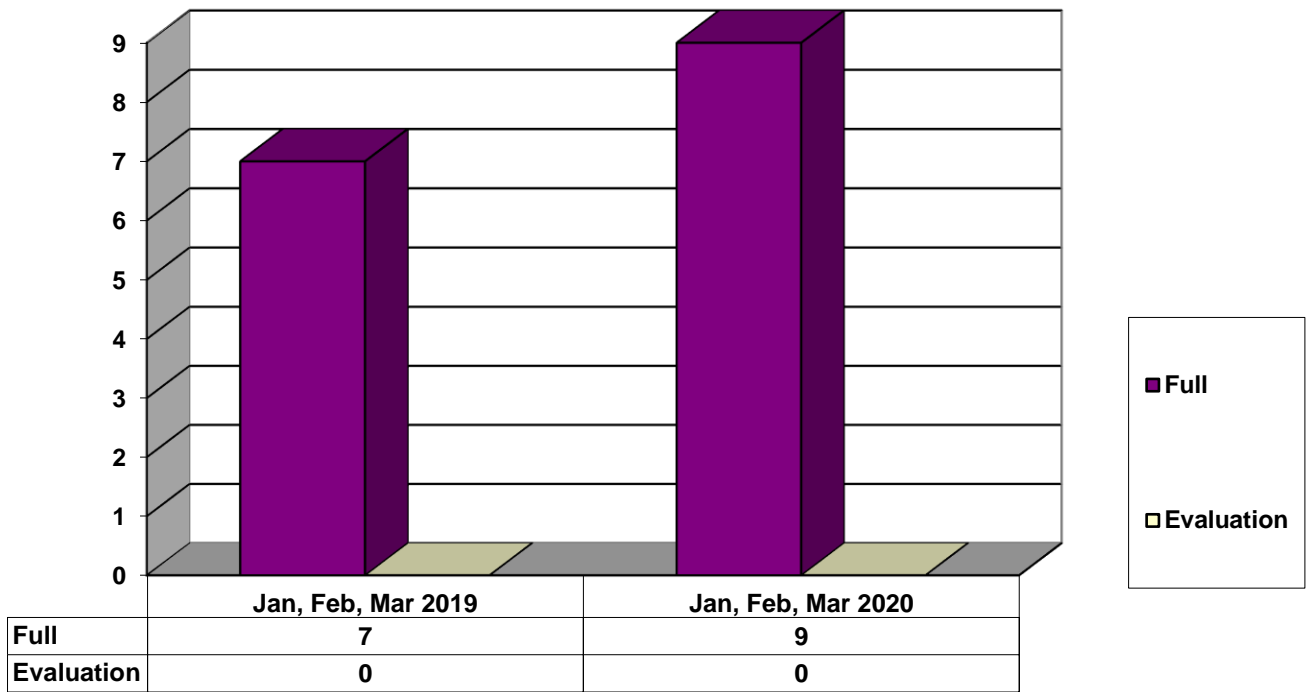


12 & Under
 13 yrs
 14 yrs
 15 yrs
 16 yrs
 17 - over

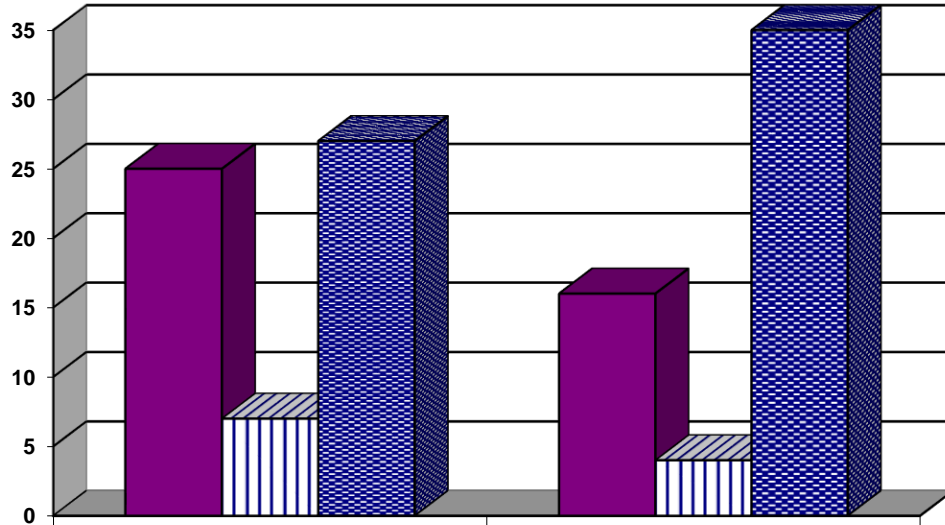
Restitution Ordered in New Juvenile Cases



Commitments to Illinois Department of Juvenile Justice



Investigations Completed by Juvenile Division



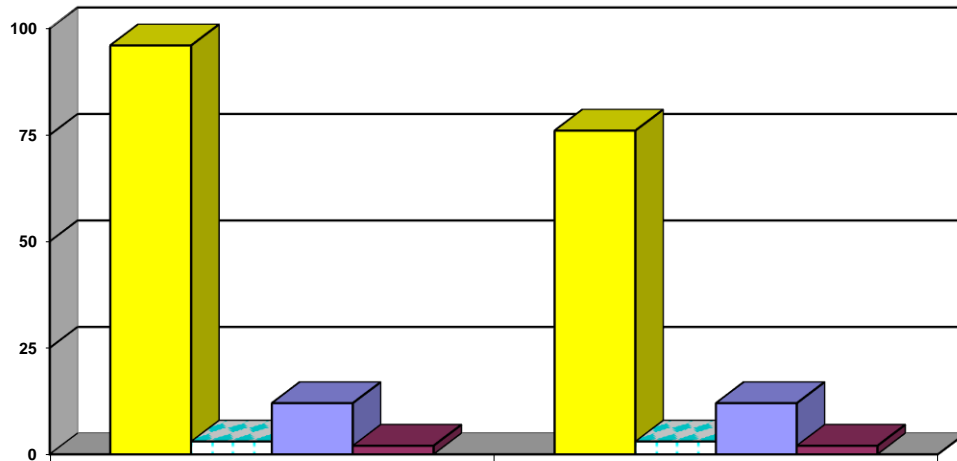
	Jan, Feb, Mar 2019	Jan, Feb, Mar 2020
Social Histories	25	16
Supplemental Social History	7	4
Remission/Review	27	35

■ Social Histories

▨ Supplemental Social History

■ Remission/Review

Juvenile Caseload at End of Reporting Periods



	March 2019	March 2020
Probation	96	76
Continued under Supervision	3	3
Informal	12	12
Other	2	2

■ Probation

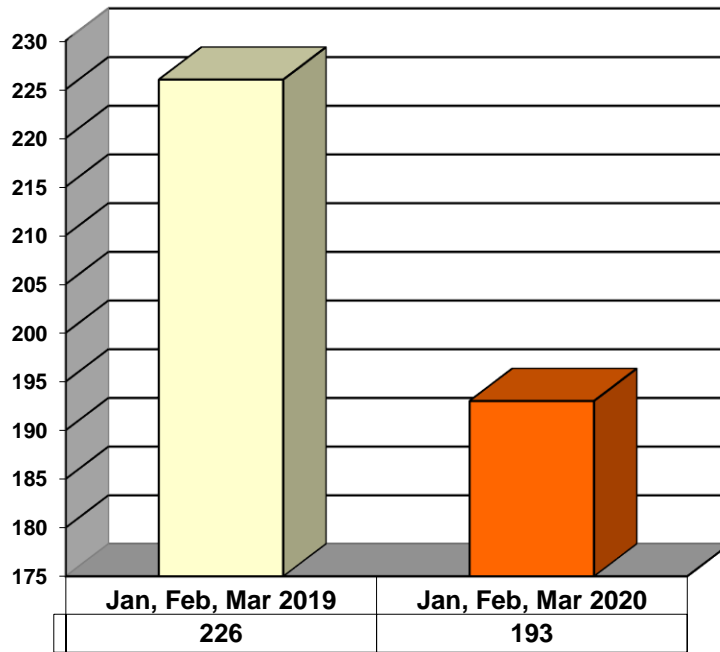
▨ Continued under Supervision

■ Informal

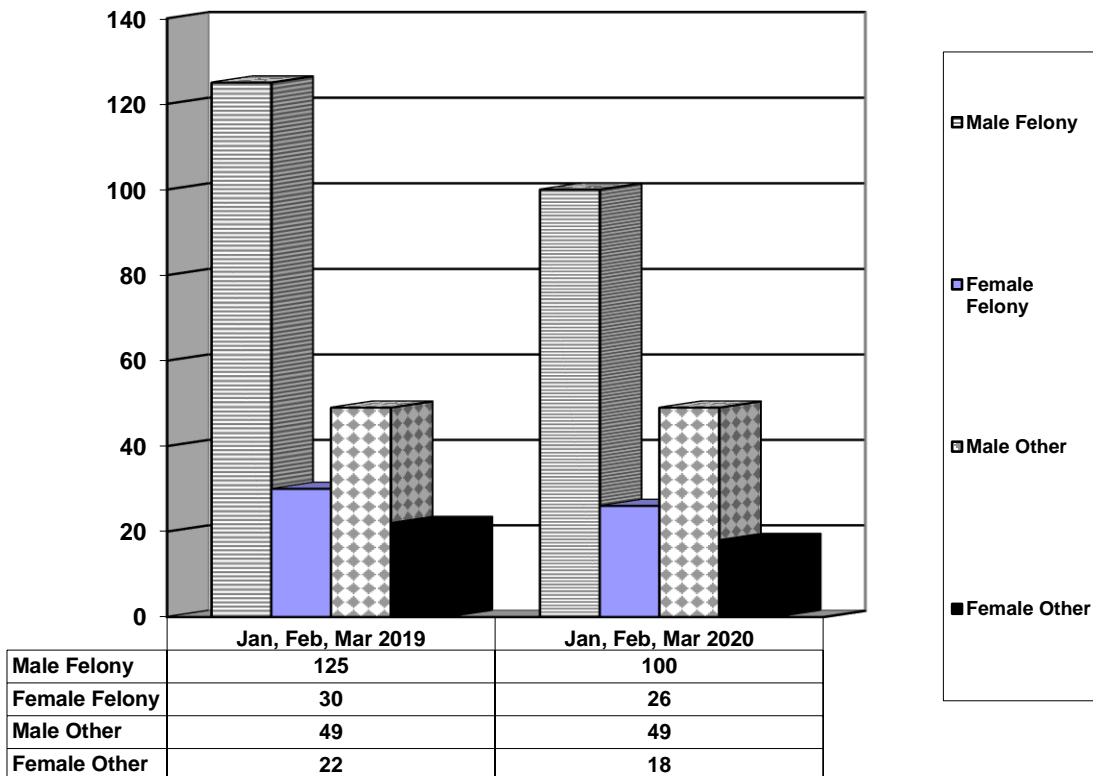
■ Other

**ADULT SUPERVISION INFORMATION
MONTHS OF JANUARY, FEBRUARY AND MARCH 2020
(Compared to Prior Year)**

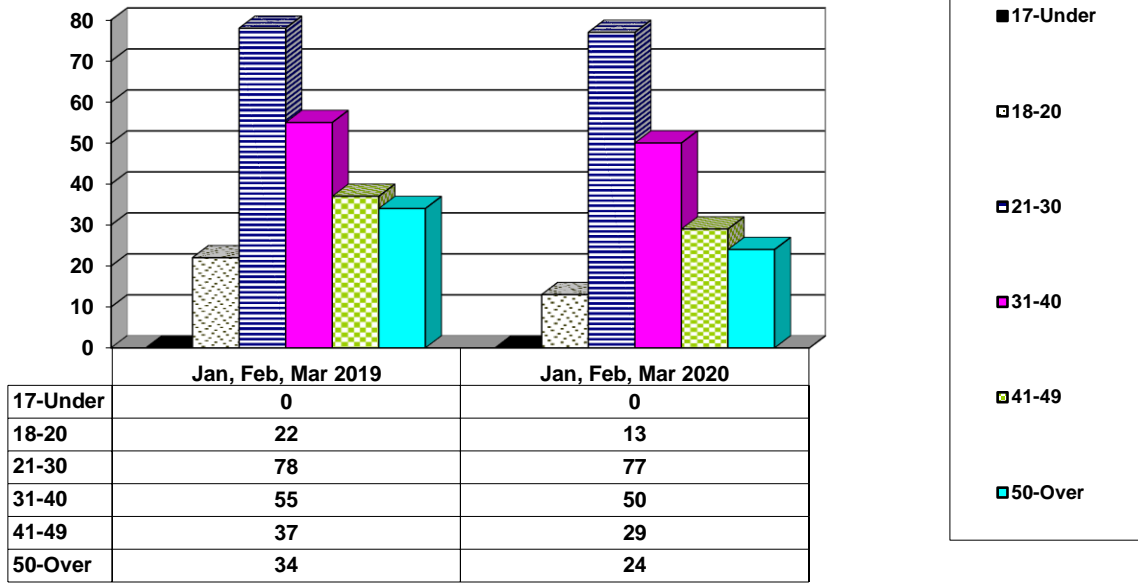
Adult Intakes Completed



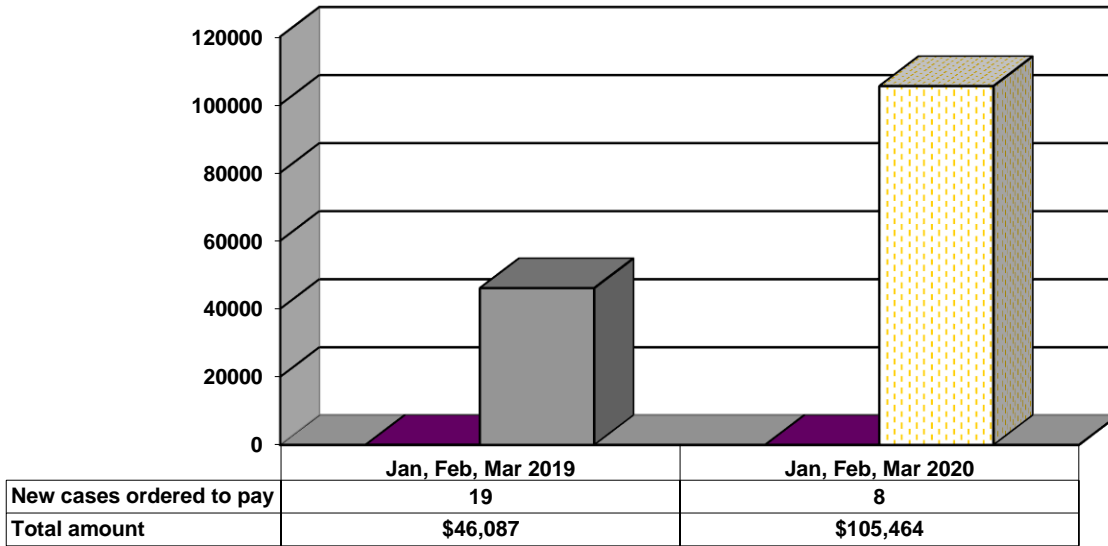
Gender Demographics for Adult Intakes



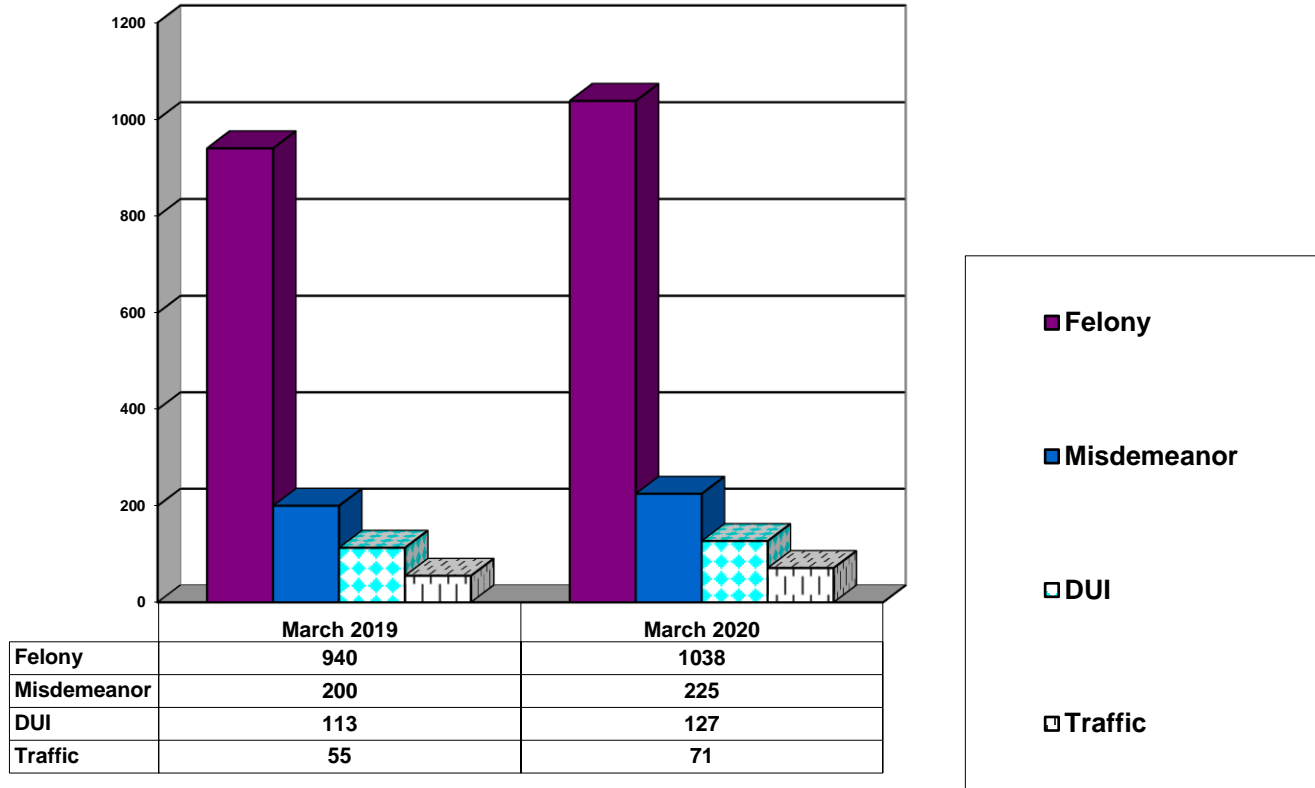
Age Demographics for Adult Intakes



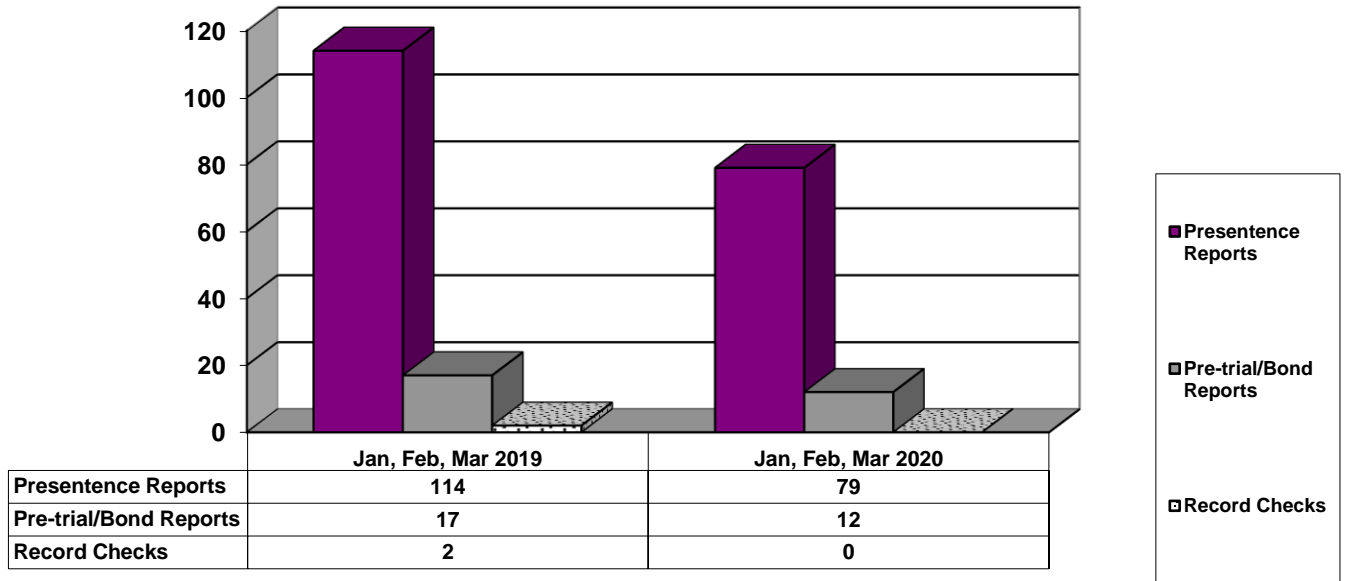
Restitution Ordered in New Adult Cases



Breakdown of Adult Caseload at End of Reporting Periods



Adult Investigations Completed



Commitments to Illinois Department of Corrections

