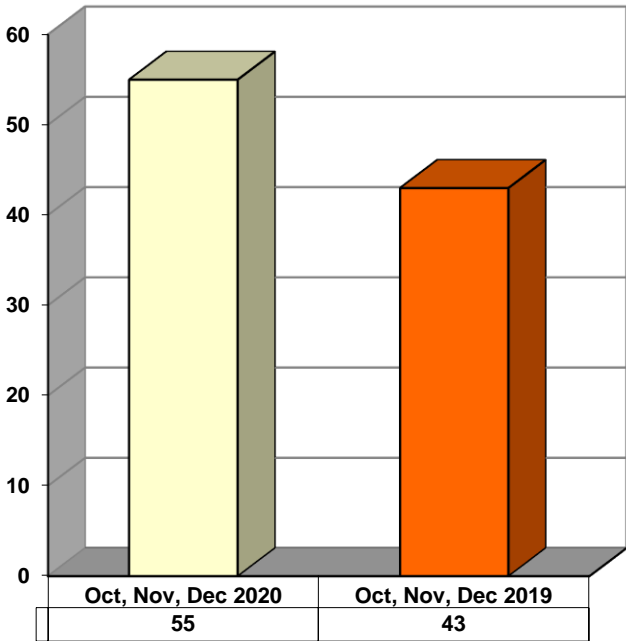
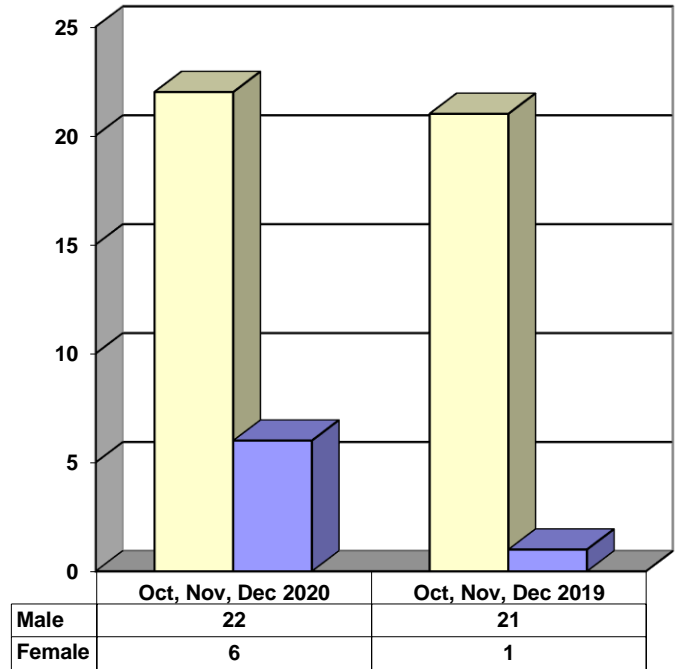


JUVENILE SUPERVISION INFORMATION
MONTHS OF OCTOBER, NOVEMBER, AND DECEMBER 2020
 (Compared to Prior Year)

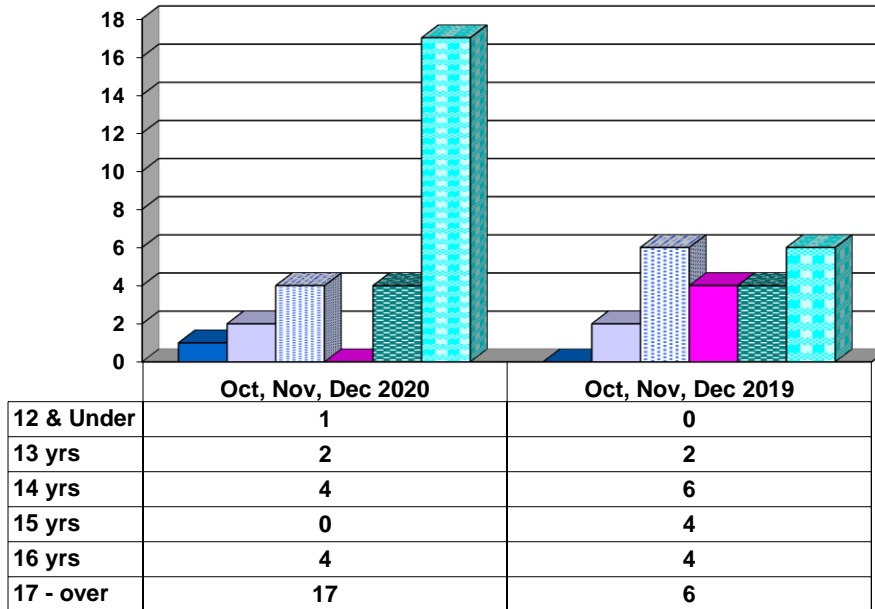
Juvenile Delinquency Petitions Filed



Gender Demographics for Juvenile Admissions

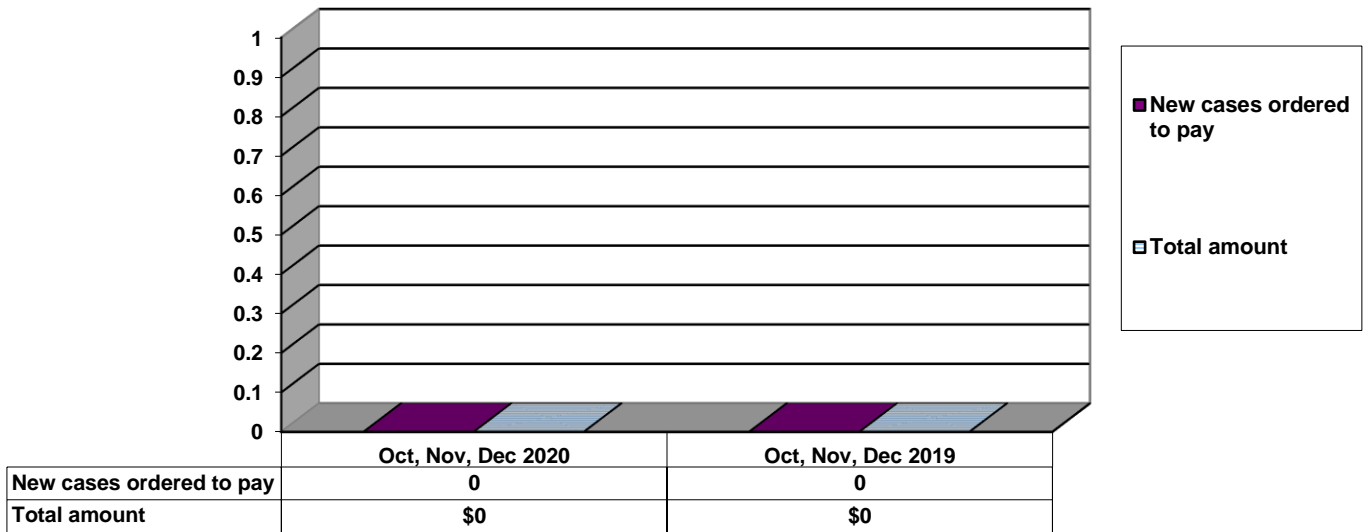


Age Demographics for Juvenile Admissions

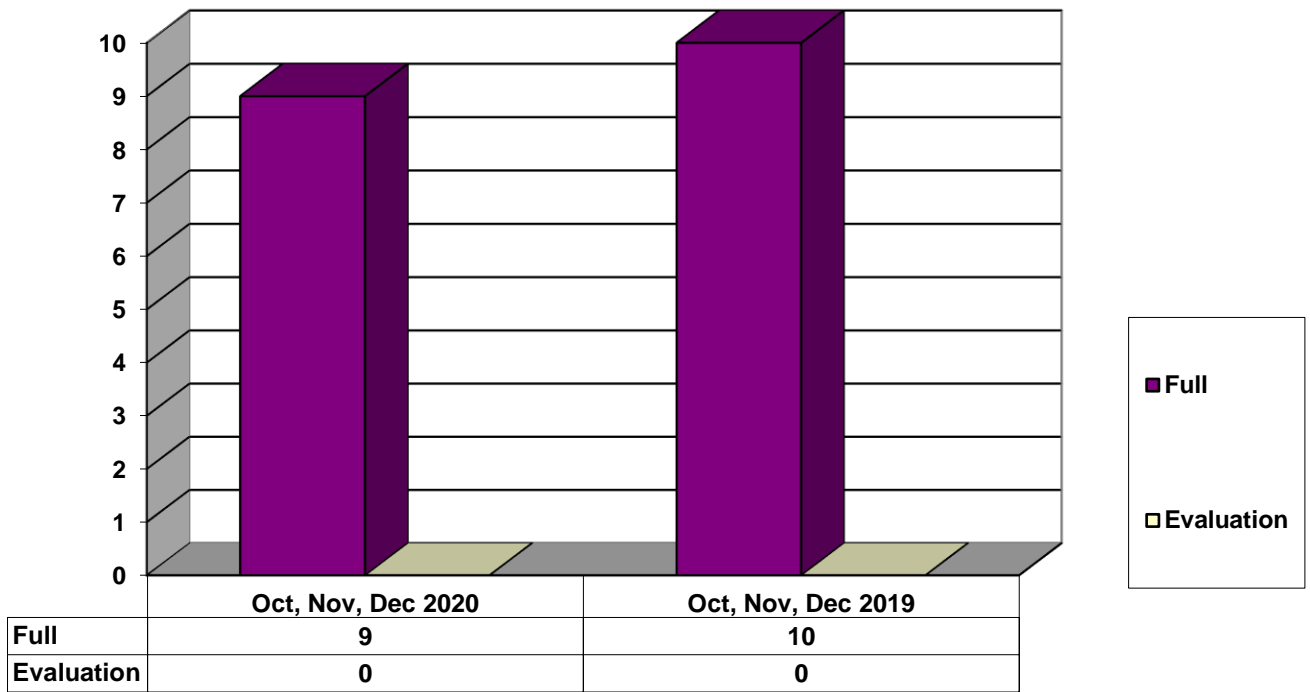


■ 12 & Under
 ■ 13 yrs
 ■ 14 yrs
 ■ 15 yrs
 ■ 16 yrs
 ■ 17 - over

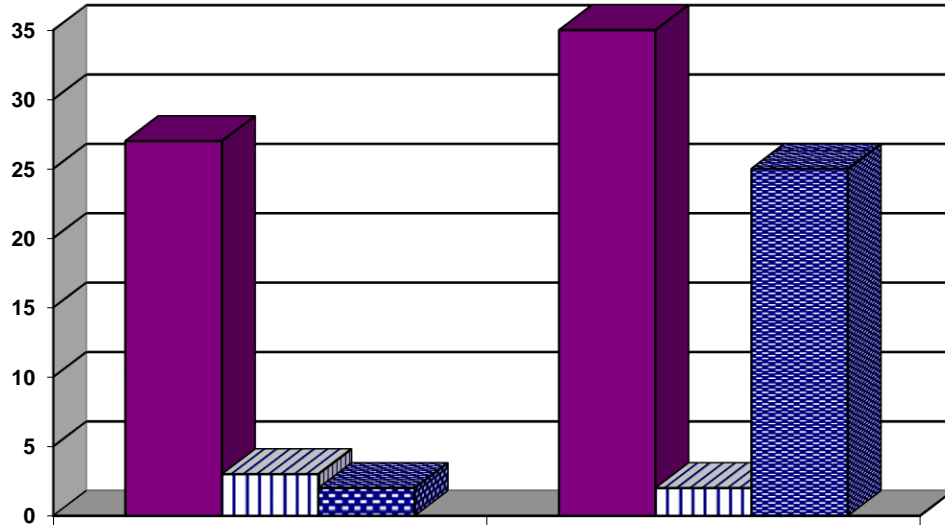
Restitution Ordered in New Juvenile Cases



Commitments to Illinois Department of Juvenile Justice



Investigations Completed by Juvenile Division



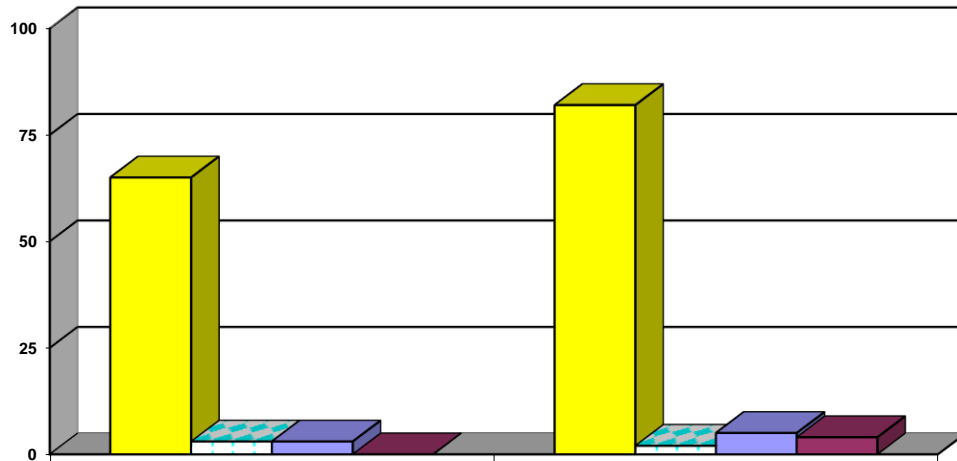
	Oct, Nov, Dec 2020	Oct, Nov, Dec 2019
Social Histories	27	35
Supplemental Social History	3	2
Remission/Review	2	25

■ Social Histories

▨ Supplemental Social History

▨ Remission/Review

Juvenile Caseload at End of Reporting Periods



	December 2020	December 2019
Probation	65	82
Continued under Supervision	3	2
Informal	3	5
Other	0	4

■ Probation

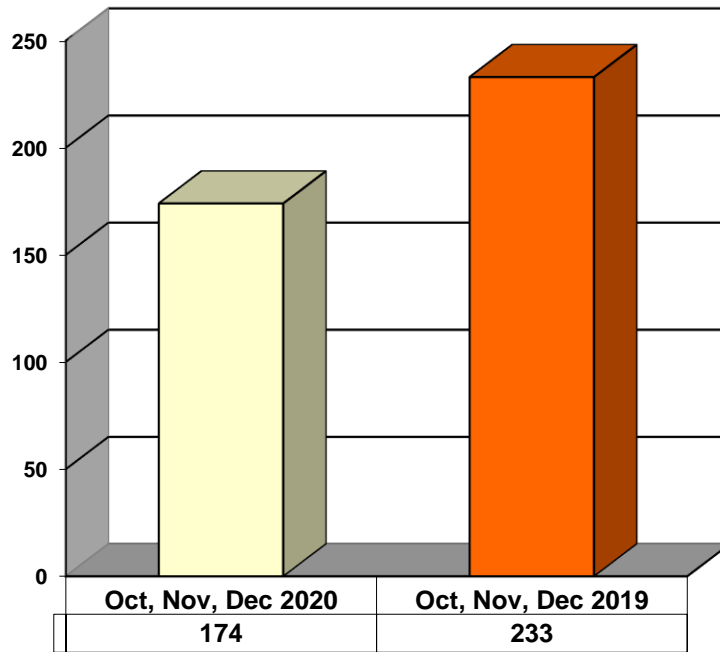
▨ Continued under Supervision

▨ Informal

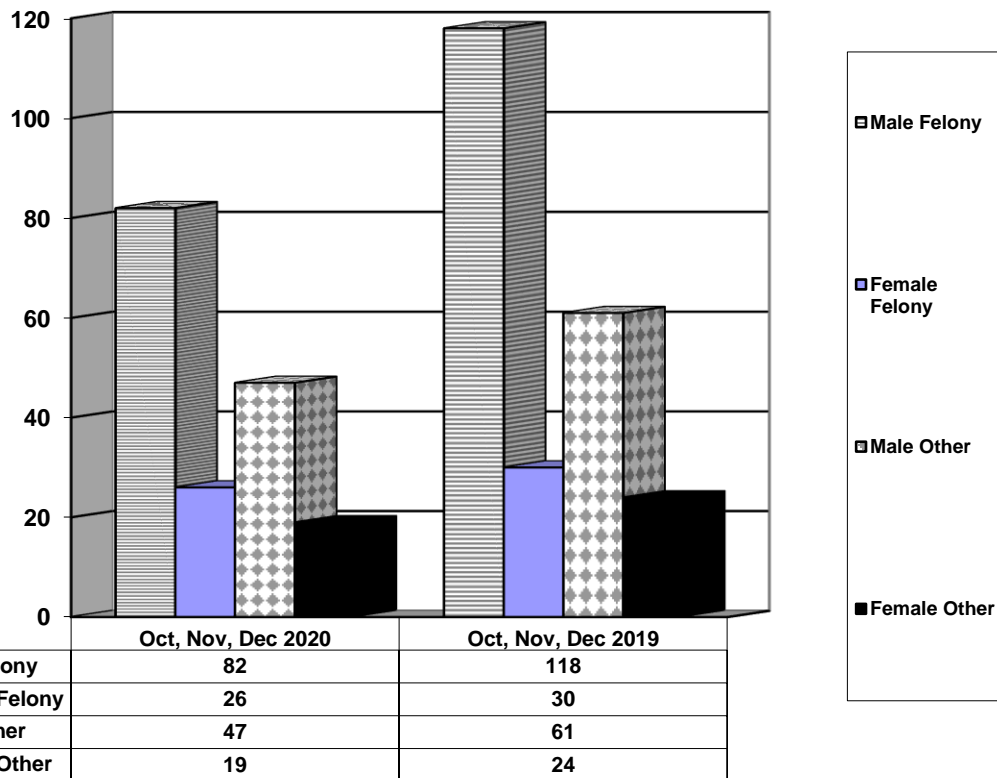
▨ Other

**ADULT SUPERVISION INFORMATION
MONTHS OF OCTOBER, NOVEMBER, AND DECEMBER 2020
(Compared to Prior Year)**

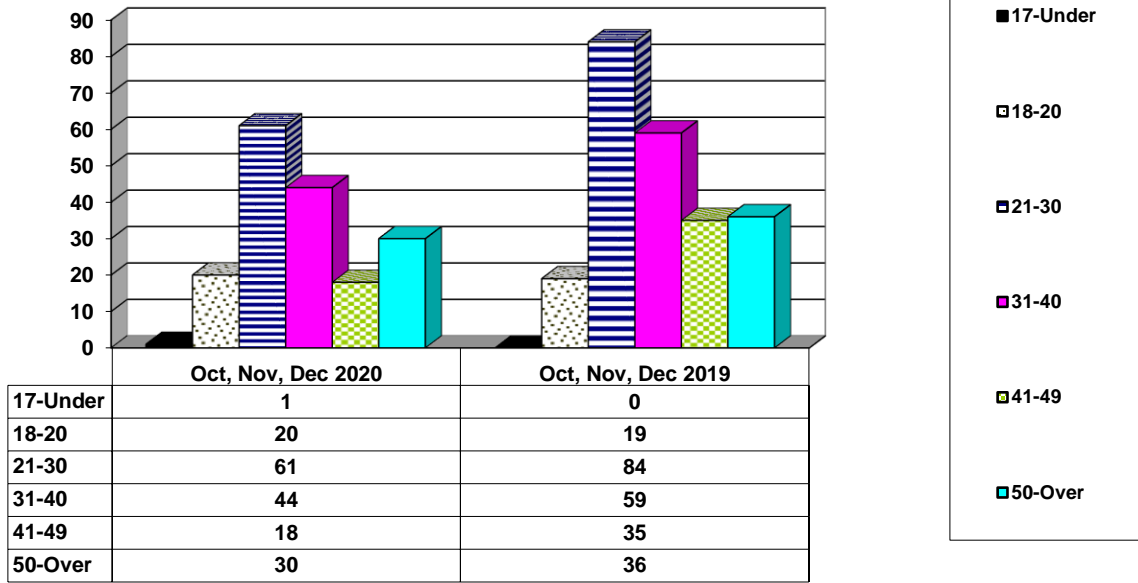
Adult Intakes Completed



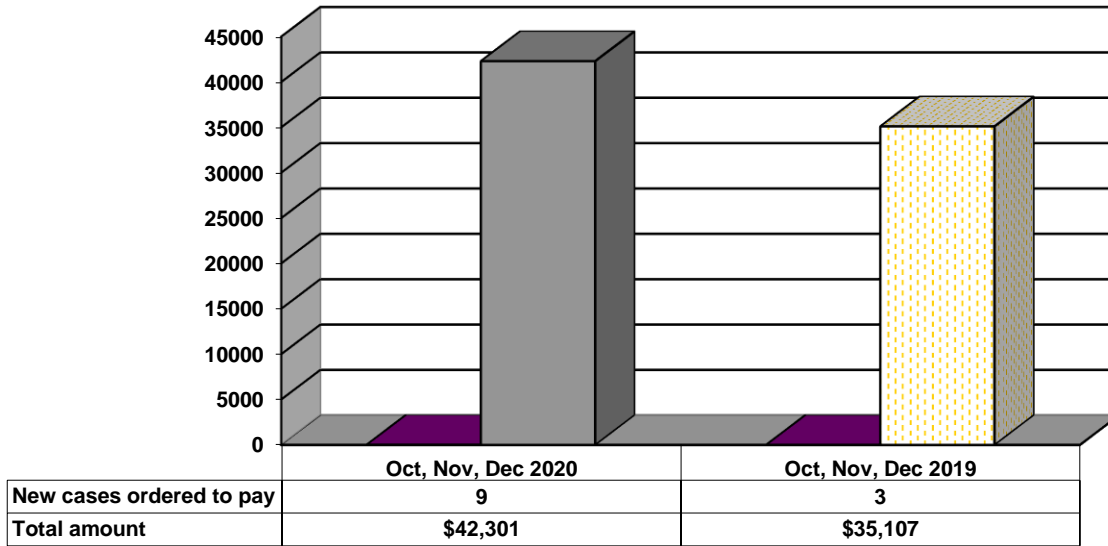
Gender Demographics for Adult Intakes



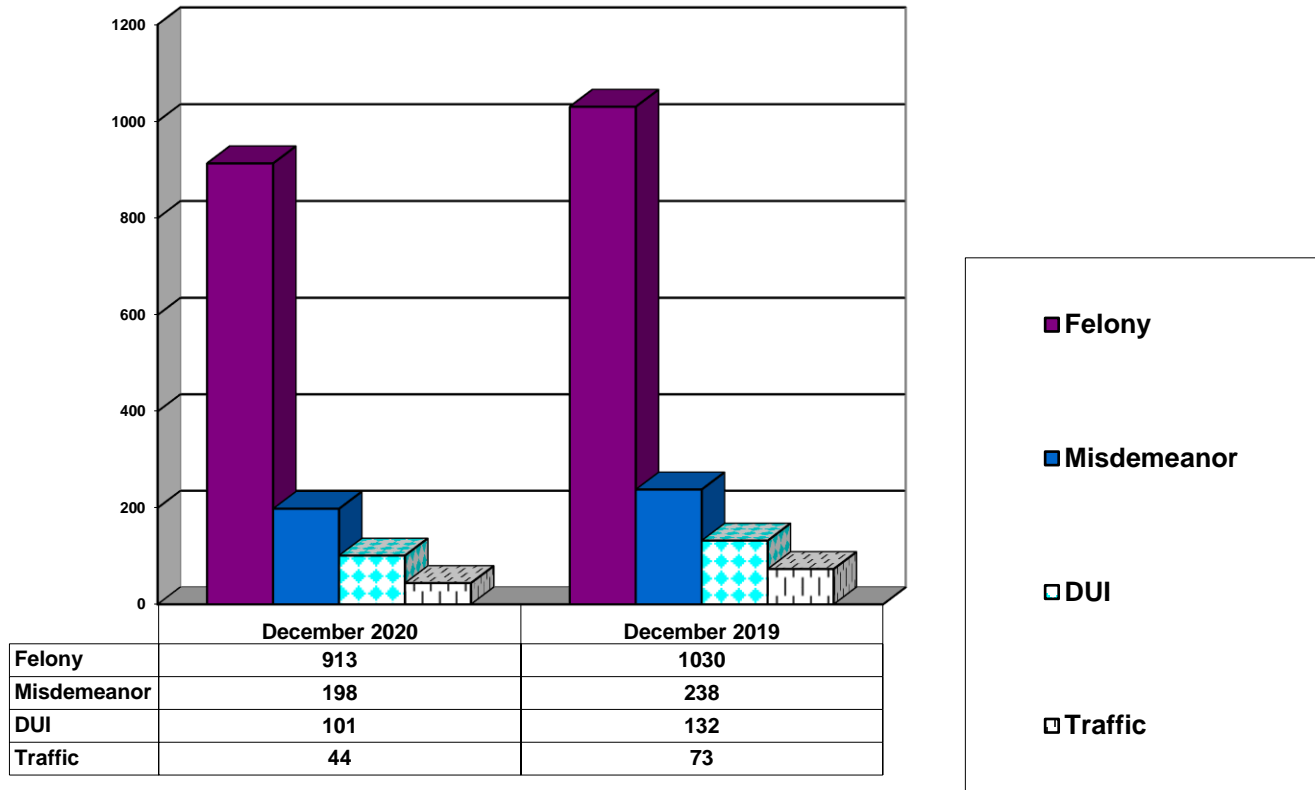
Age Demographics for Adult Intakes



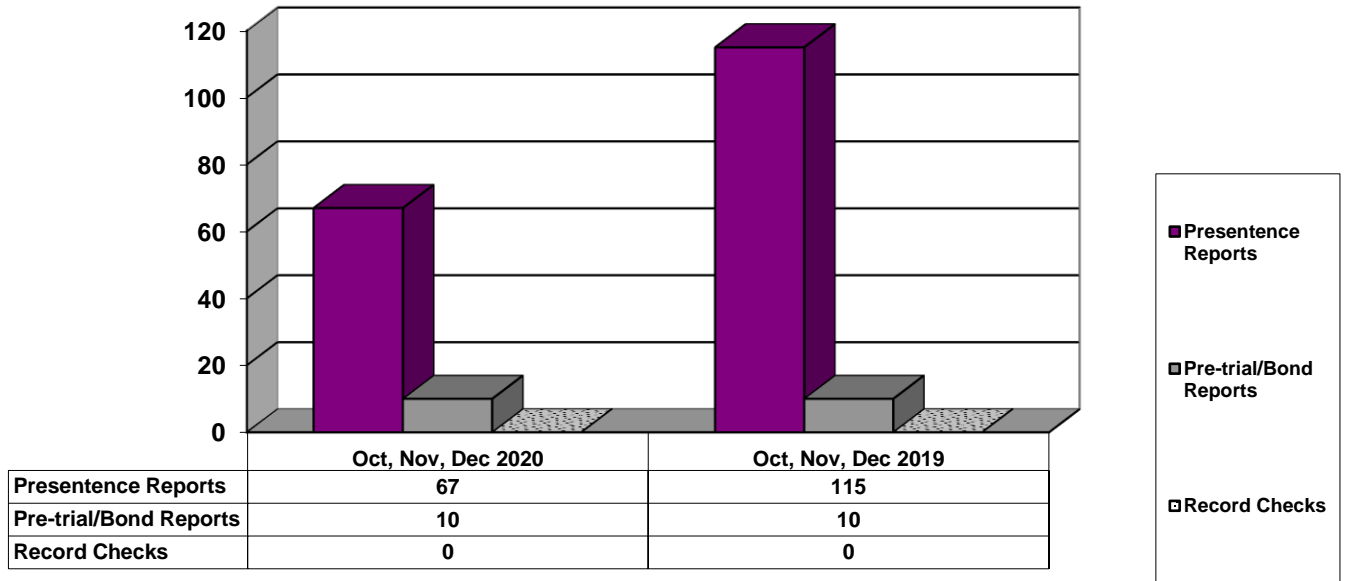
Restitution Ordered in New Adult Cases



Breakdown of Adult Caseload at End of Reporting Periods



Adult Investigations Completed



Commitments to Illinois Department of Corrections

